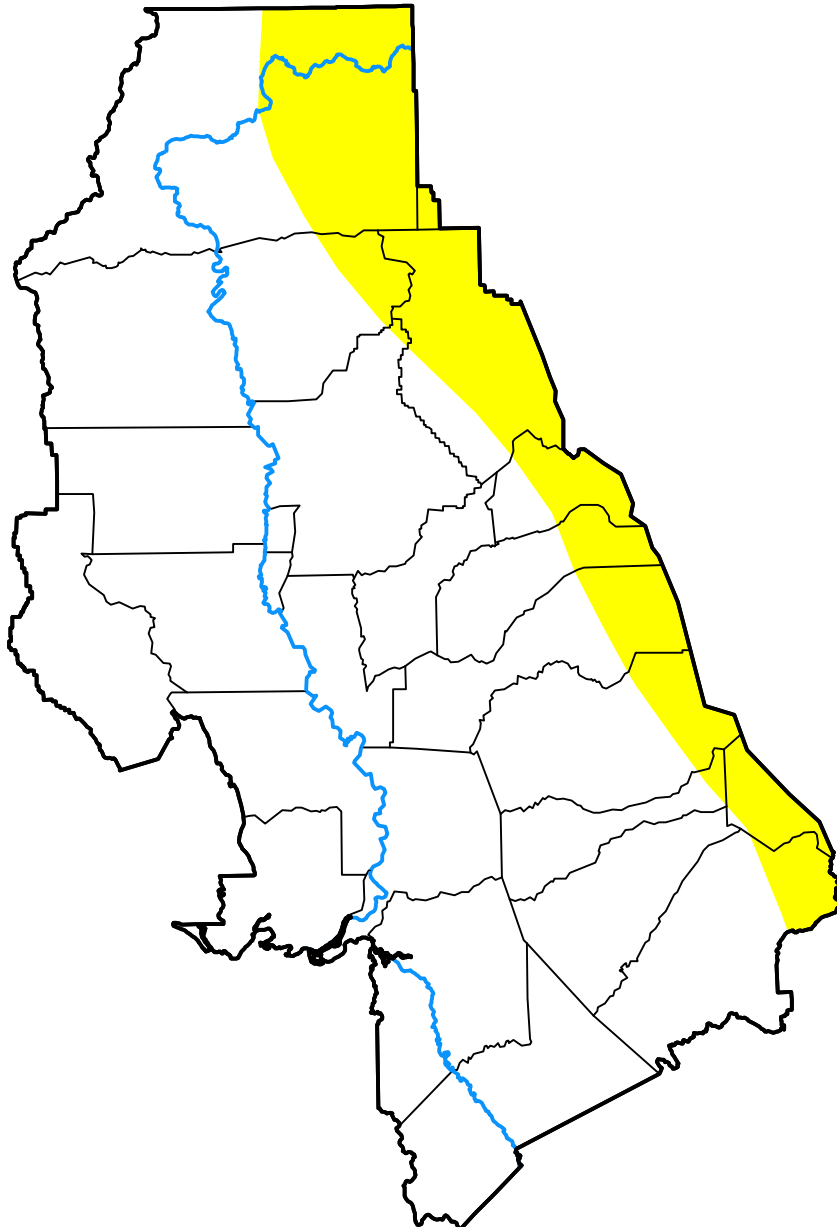


# U.S. Drought Monitor Sacramento, CA WFO

**March 11, 2008**  
(Released Thursday, Mar. 13, 2008)  
Valid 8 a.m. EDT



*Drought Conditions (Percent Area)*

	None	D0-D4	D1-D4	D2-D4	D3-D4	D4
<b>Current</b>	82.48	17.52	0.00	0.00	0.00	0.00
<b>Last Week</b> <i>03-06-2008</i>	82.48	17.52	0.00	0.00	0.00	0.00
<b>3 Months Ago</b> <i>12-13-2007</i>	1.69	98.31	81.20	7.38	0.00	0.00
<b>Start of Calendar Year</b> <i>01-03-2008</i>	1.69	98.31	80.74	7.38	0.00	0.00
<b>Start of Water Year</b> <i>09-27-2007</i>	0.00	100.00	99.94	13.92	0.00	0.00
<b>One Year Ago</b> <i>03-15-2007</i>	60.64	39.36	1.52	0.00	0.00	0.00

*Intensity:*

- None
- D0 Abnormally Dry
- D1 Moderate Drought
- D2 Severe Drought
- D3 Extreme Drought
- D4 Exceptional Drought

*The Drought Monitor focuses on broad-scale conditions. Local conditions may vary. For more information on the Drought Monitor, go to <https://droughtmonitor.unl.edu/About.aspx>*

*Author:*

Brian Fuchs  
National Drought Mitigation Center

