

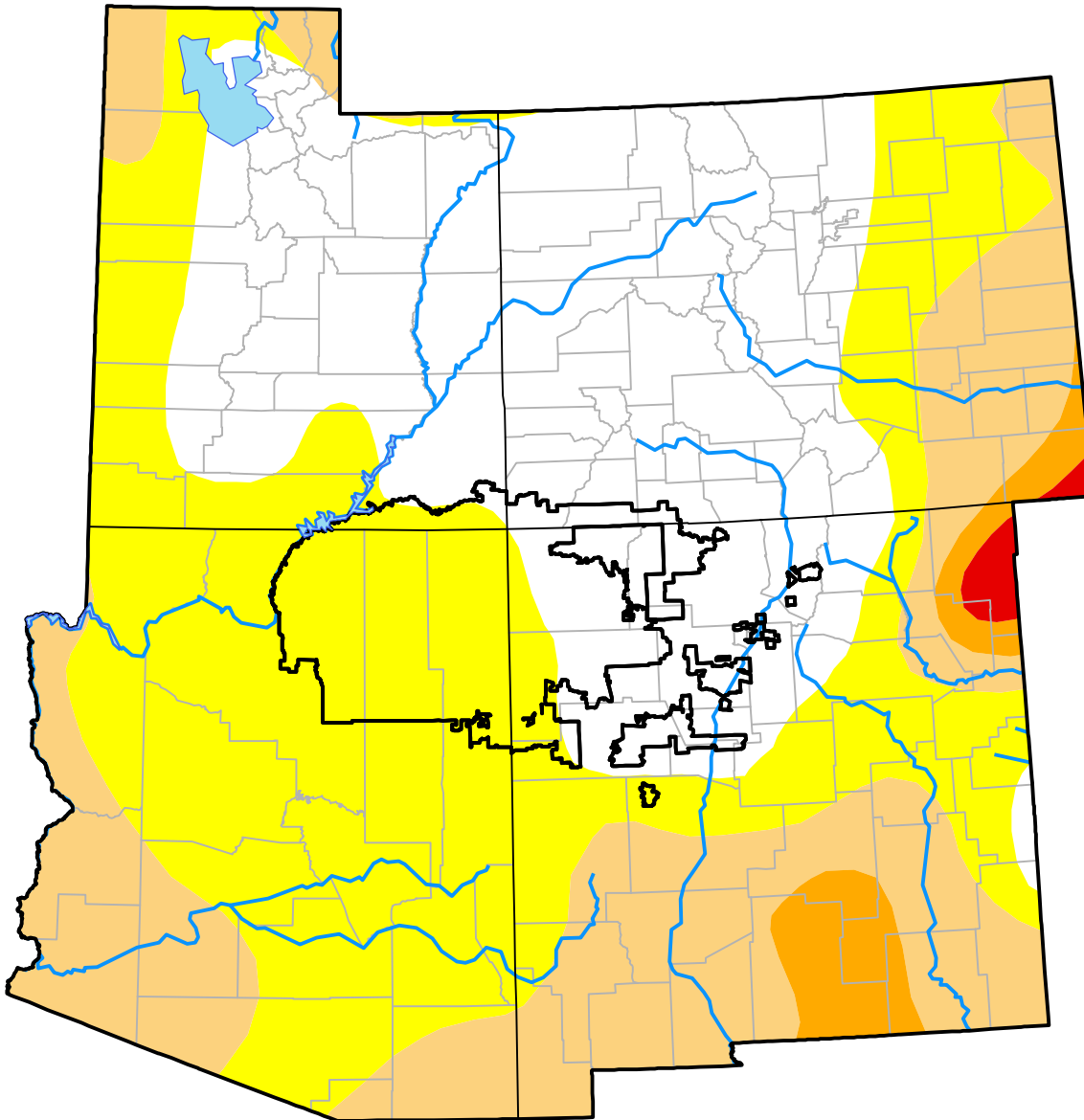
Southwest Corners RDEWS and Surrounding Areas

(Released Thursday, May. 22, 2008)

Valid 8 a.m. EDT

Drought Conditions (Percent Area)

	None	D0-D4	D1-D4	D2-D4	D3-D4	D4
Current	35.61	64.39	25.89	3.58	0.55	0.00
Last Week <i>05-15-2008</i>	35.61	64.39	26.37	1.97	0.00	0.00
3 Months Ago <i>02-21-2008</i>	43.26	56.74	16.34	4.29	0.00	0.00
Start of Calendar Year <i>01-03-2008</i>	39.45	60.55	31.68	19.53	0.00	0.00
Start of Water Year <i>09-27-2007</i>	44.10	55.90	37.07	22.92	7.29	0.00
One Year Ago <i>05-24-2007</i>	37.19	62.81	51.42	24.26	5.90	0.00



Intensity:

- None
- D0 Abnormally Dry
- D1 Moderate Drought
- D2 Severe Drought
- D3 Extreme Drought
- D4 Exceptional Drought

The Drought Monitor focuses on broad-scale conditions. Local conditions may vary. For more information on the Drought Monitor, go to <https://droughtmonitor.unl.edu/About.aspx>

Author:

David Miskus
NOAA/NWS/NCEP/CPC

