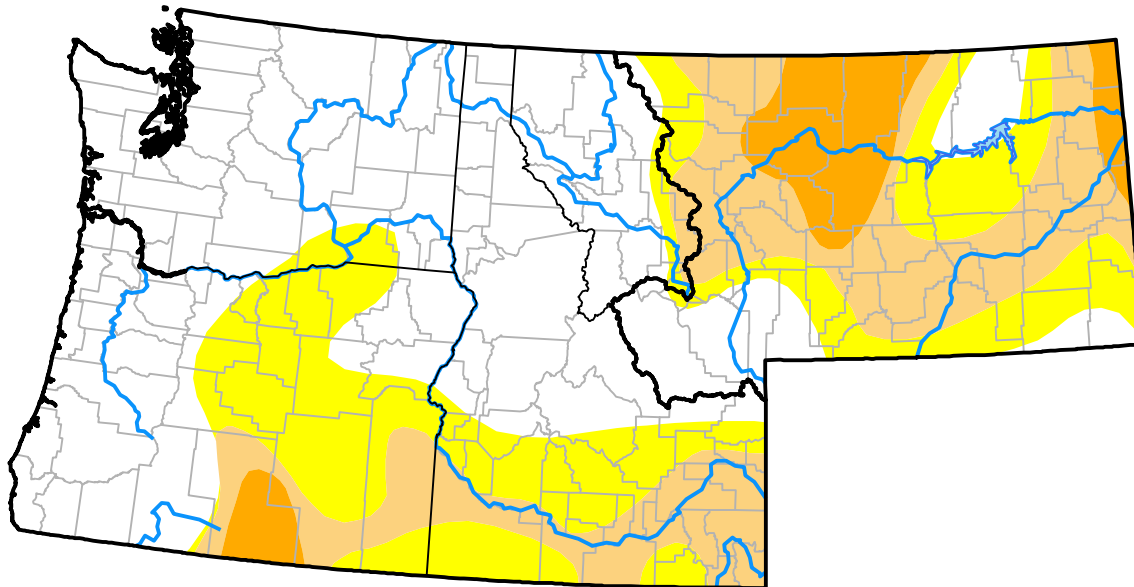


Northwest RDEWS and Surrounding Areas

(Released Thursday, May. 22, 2008)
 10:00 a.m. EDT

Drought Conditions (Percent Area)

	None	D0-D4	D1-D4	D2-D4	D3-D4	D4
Current	50.51	49.49	25.67	6.62	0.01	0.00
Last Week <i>05-15-2008</i>	52.61	47.39	29.09	6.62	0.01	0.00
3 Months Ago <i>02-21-2008</i>	44.04	55.96	36.74	15.15	0.00	0.00
Start of Calendar Year <i>01-03-2008</i>	29.24	70.76	51.78	21.89	0.00	0.00
Start of Water Year <i>09-27-2007</i>	11.34	88.66	67.21	49.02	11.98	0.00
One Year Ago <i>05-24-2007</i>	48.59	51.41	19.10	1.87	0.00	0.00



Intensity:

- None
- D0 Abnormally Dry
- D1 Moderate Drought
- D2 Severe Drought
- D3 Extreme Drought
- D4 Exceptional Drought

The Drought Monitor focuses on broad-scale conditions. Local conditions may vary. For more information on the Drought Monitor, go to <https://droughtmonitor.unl.edu/About.aspx>

Author:

David Miskus
 NOAA/NWS/NCEP/CPC

