

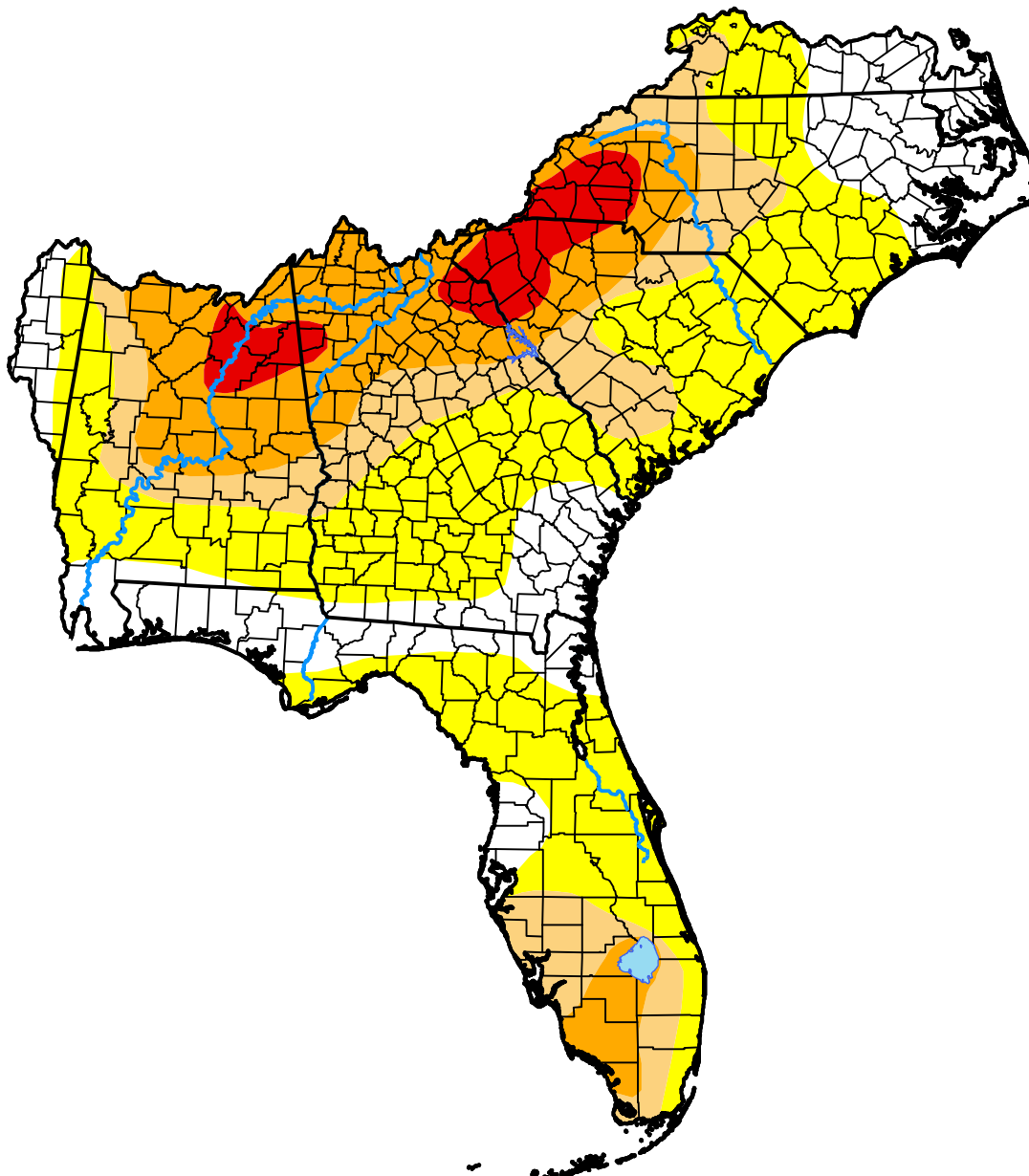
U.S. Drought Monitor Southeast RFC

May 20, 2008
(Released Thursday, May. 22, 2008)

Valid 8 a.m. EDT

Drought Conditions (Percent Area)

	None	D0-D4	D1-D4	D2-D4	D3-D4	D4
Current	20.74	79.26	39.28	22.80	5.45	0.00
Last Week <i>05-15-2008</i>	27.96	72.04	40.83	23.06	9.39	0.00
3 Months Ago <i>02-21-2008</i>	8.45	91.55	70.41	53.81	34.93	19.10
Start of Calendar Year <i>01-03-2008</i>	9.59	90.41	73.33	59.77	41.11	20.52
Start of Water Year <i>09-27-2007</i>	11.74	88.26	74.66	58.80	40.53	14.79
One Year Ago <i>05-24-2007</i>	7.71	92.29	78.45	50.85	28.51	0.00



Intensity:

- None
- D0 Abnormally Dry
- D1 Moderate Drought
- D2 Severe Drought
- D3 Extreme Drought
- D4 Exceptional Drought

The Drought Monitor focuses on broad-scale conditions. Local conditions may vary. For more information on the Drought Monitor, go to <https://droughtmonitor.unl.edu/About.aspx>

Author:

David Miskus
NOAA/NWS/NCEP/CPC



droughtmonitor.unl.edu