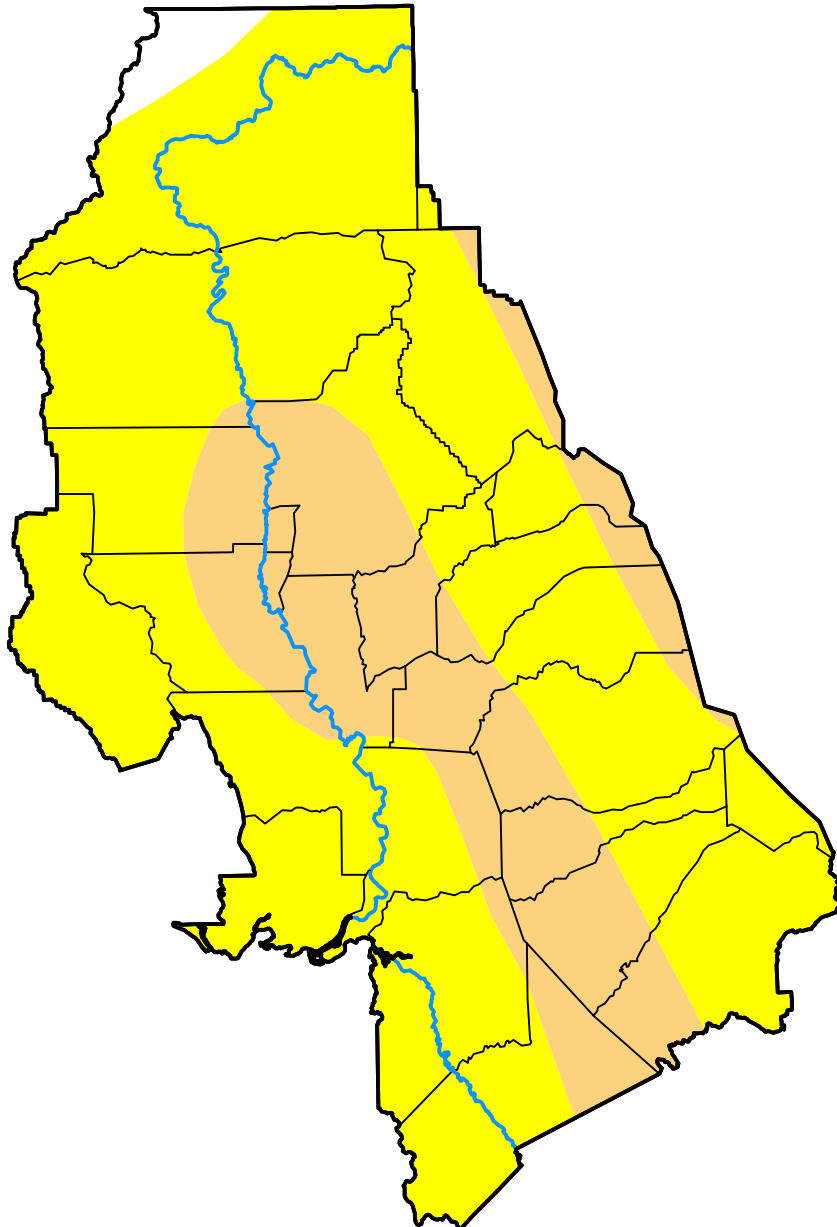


U.S. Drought Monitor Sacramento, CA WFO

May 20, 2008
(Released Thursday, May. 22, 2008)
Valid 8 a.m. EDT



Drought Conditions (Percent Area)

	None	D0-D4	D1-D4	D2-D4	D3-D4	D4
Current	1.47	98.53	25.56	0.00	0.00	0.00
Last Week <i>05-15-2008</i>	1.47	98.53	25.56	0.00	0.00	0.00
3 Months Ago <i>02-21-2008</i>	25.08	74.92	0.00	0.00	0.00	0.00
Start of Calendar Year <i>01-03-2008</i>	1.69	98.31	80.74	7.38	0.00	0.00
Start of Water Year <i>09-27-2007</i>	0.00	100.00	99.94	13.92	0.00	0.00
One Year Ago <i>05-24-2007</i>	0.00	100.00	99.60	13.92	0.00	0.00

Intensity:

- None
- D0 Abnormally Dry
- D1 Moderate Drought
- D2 Severe Drought
- D3 Extreme Drought
- D4 Exceptional Drought

The Drought Monitor focuses on broad-scale conditions. Local conditions may vary. For more information on the Drought Monitor, go to <https://droughtmonitor.unl.edu/About.aspx>

Author:

David Miskus
NOAA/NWS/NCEP/CPC



droughtmonitor.unl.edu