

U.S. Drought Monitor

Pacific Northwest Watershed

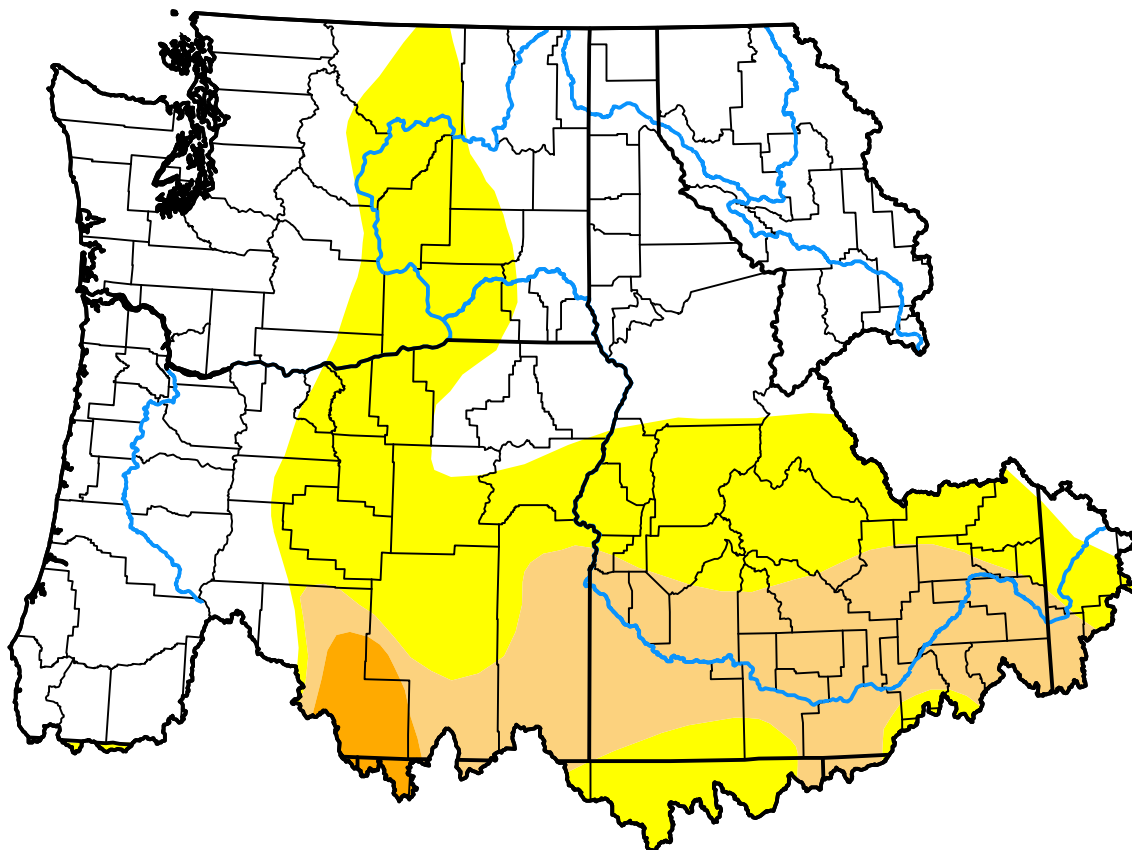
July 8, 2008

(Released Thursday, Jul. 10, 2008)

Valid 8 a.m. EDT

Drought Conditions (Percent Area)

	None	D0	D1	D2	D3	D4
Current	52.32	29.50	16.49	1.68	0.00	0.00
Last Week <i>07-03-2008</i>	53.04	28.78	16.49	1.68	0.00	0.00
3 Months Ago <i>04-10-2008</i>	66.86	20.12	10.78	2.24	0.00	0.00
Start of Calendar Year <i>01-03-2008</i>	40.25	7.57	28.32	23.87	0.00	0.00
Start of Water Year <i>09-27-2007</i>	13.95	25.50	5.33	40.43	14.79	0.00
One Year Ago <i>07-12-2007</i>	19.23	28.74	38.78	12.45	0.79	0.00



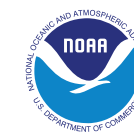
Intensity:



The Drought Monitor focuses on broad-scale conditions. Local conditions may vary. For more information on the Drought Monitor, go to <https://droughtmonitor.unl.edu/About.aspx>

Author:

Richard Tinker
CPC/NOAA/NWS/NCEP



droughtmonitor.unl.edu