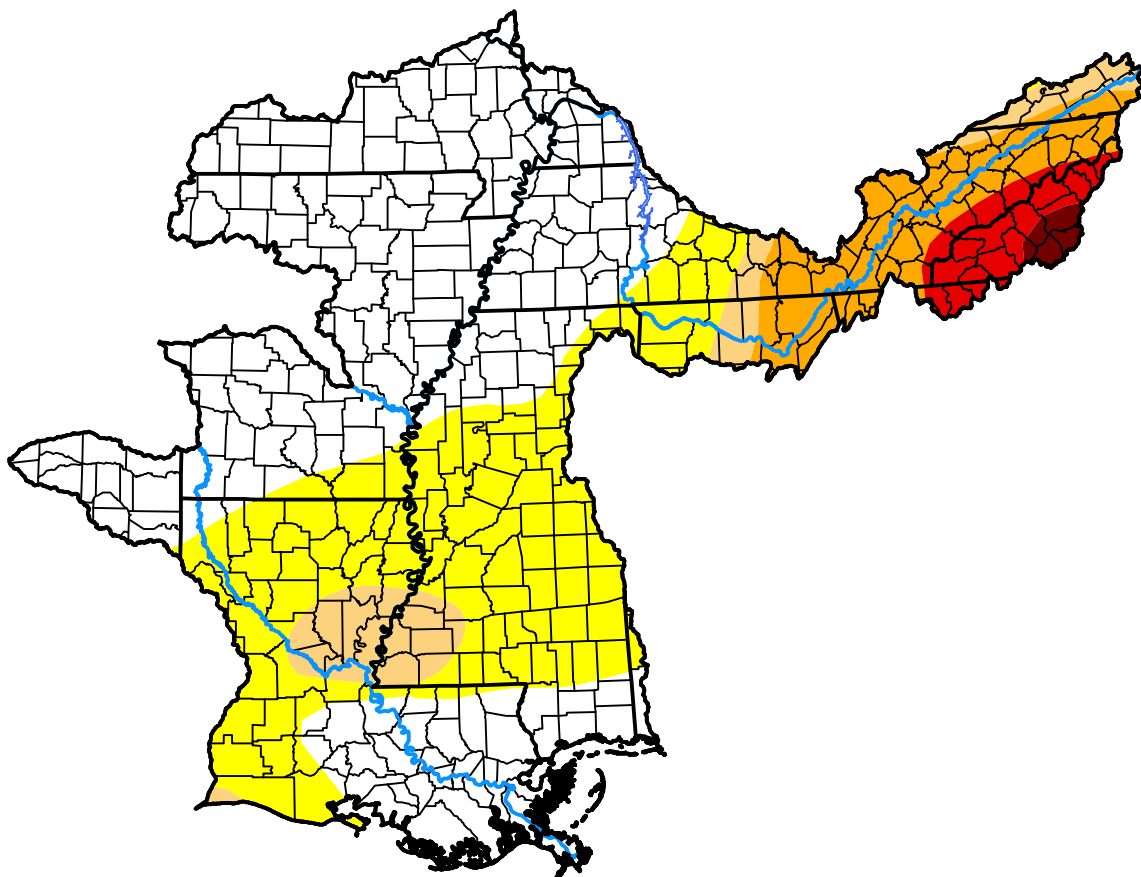


# U.S. Drought Monitor

## Lower Mississippi RFC

**July 8, 2008**  
 (Released Thursday, Jul. 10, 2008)  
 Valid 8 a.m. EDT



*Drought Conditions (Percent Area)*

	None	D0-D4	D1-D4	D2-D4	D3-D4	D4
<b>Current</b>	52.40	47.60	18.22	12.00	3.95	0.65
<b>Last Week</b> <i>07-03-2008</i>	46.95	53.05	16.60	10.46	3.36	0.65
<b>3 Months Ago</b> <i>04-10-2008</i>	67.52	32.48	13.76	7.80	2.92	0.00
<b>Start of Calendar Year</b> <i>01-03-2008</i>	56.86	43.14	18.48	15.36	14.25	9.33
<b>Start of Water Year</b> <i>09-27-2007</i>	41.90	58.10	40.55	32.46	23.50	10.83
<b>One Year Ago</b> <i>07-12-2007</i>	50.12	49.88	33.77	22.66	15.18	3.48

***Intensity:***

- None
- D0 Abnormally Dry
- D1 Moderate Drought
- D2 Severe Drought
- D3 Extreme Drought
- D4 Exceptional Drought

*The Drought Monitor focuses on broad-scale conditions. Local conditions may vary. For more information on the Drought Monitor, go to <https://droughtmonitor.unl.edu/About.aspx>*

***Author:***

Richard Tinker  
 CPC/NOAA/NWS/NCEP

