

U.S. Drought Monitor

Southeast RFC

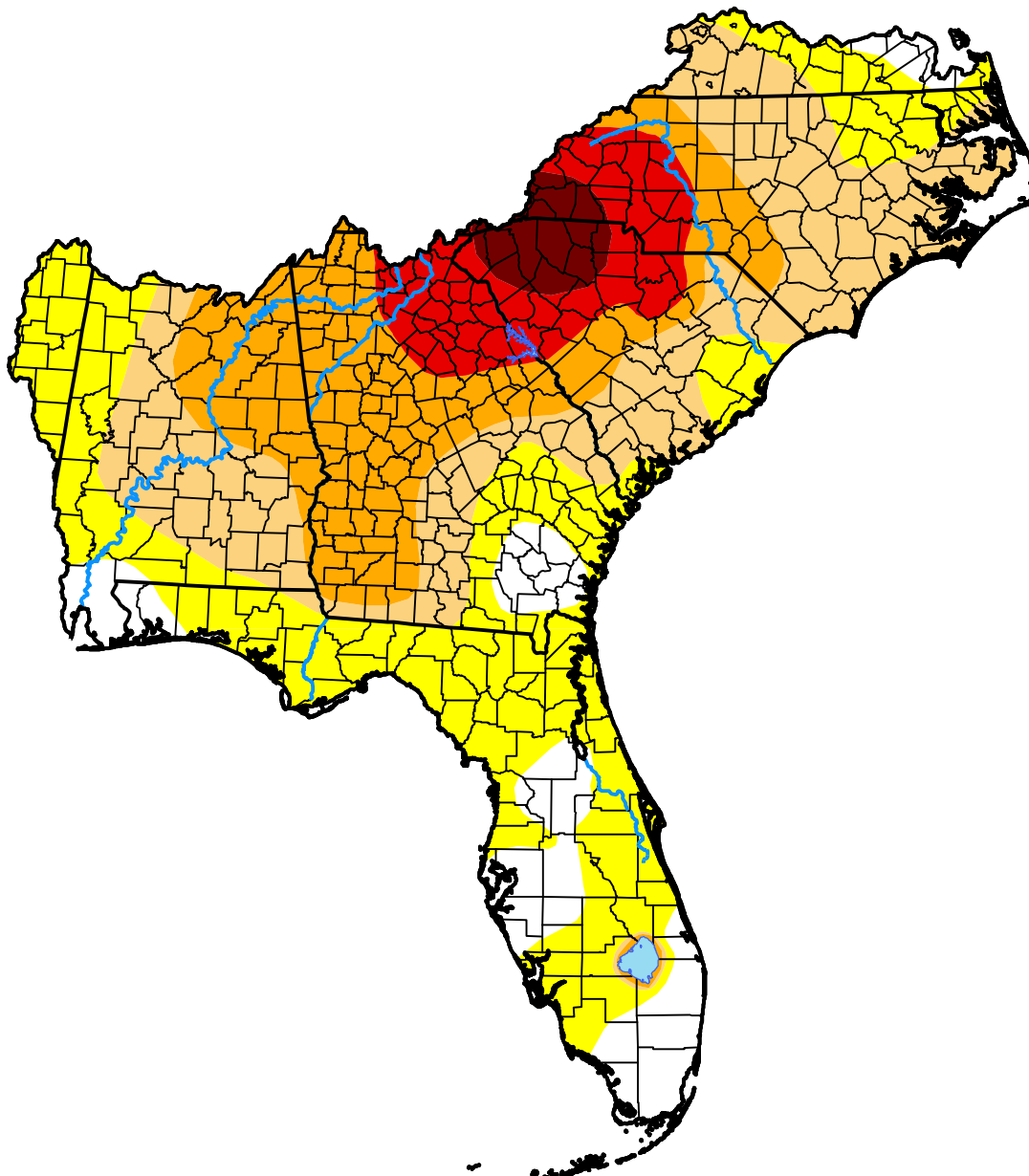
July 8, 2008

(Released Thursday, Jul. 10, 2008)

Valid 8 a.m. EDT

Drought Conditions (Percent Area)

	None	D0-D4	D1-D4	D2-D4	D3-D4	D4
Current	10.15	89.85	58.38	32.04	11.45	2.74
Last Week <i>07-03-2008</i>	8.53	91.47	60.81	36.07	11.72	2.74
3 Months Ago <i>04-10-2008</i>	32.55	67.45	45.79	27.93	11.65	0.00
Start of Calendar Year <i>01-03-2008</i>	9.59	90.41	73.33	59.77	41.11	20.52
Start of Water Year <i>09-27-2007</i>	11.74	88.26	74.66	58.80	40.53	14.79
One Year Ago <i>07-12-2007</i>	4.73	95.27	74.13	39.05	17.39	3.24



Intensity:

- None
- D0 Abnormally Dry
- D1 Moderate Drought
- D2 Severe Drought
- D3 Extreme Drought
- D4 Exceptional Drought

The Drought Monitor focuses on broad-scale conditions. Local conditions may vary. For more information on the Drought Monitor, go to <https://droughtmonitor.unl.edu/About.aspx>

Author:

Richard Tinker
CPC/NOAA/NWS/NCEP



droughtmonitor.unl.edu