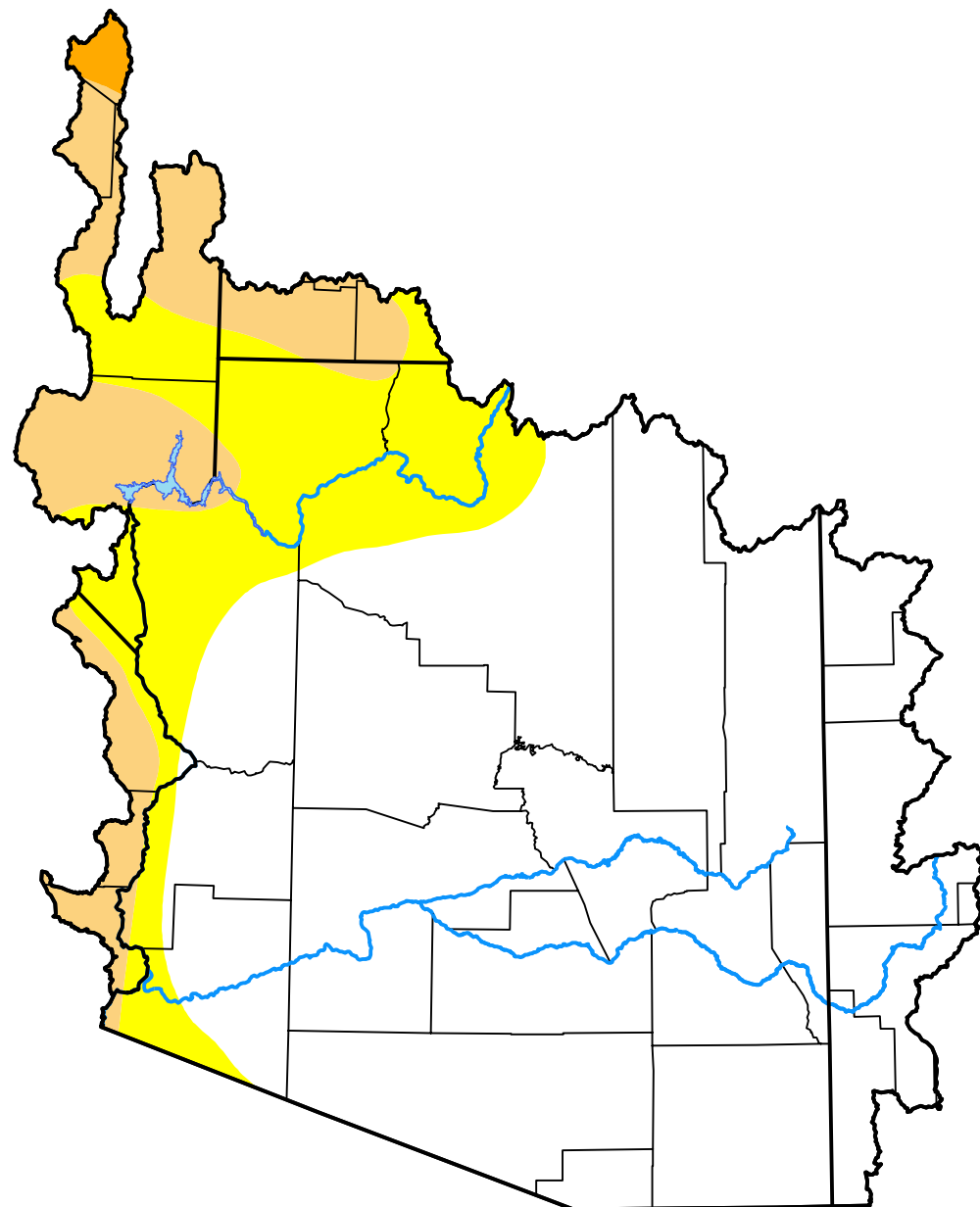


# U.S. Drought Monitor

## Lower Colorado Watershed

**October 14, 2008**  
 (Released Thursday, Oct. 16, 2008)  
 Valid 8 a.m. EDT



*Drought Conditions (Percent Area)*

	None	D0-D4	D1-D4	D2-D4	D3-D4	D4
<b>Current</b>	72.92	27.08	10.83	0.48	0.00	0.00
<b>Last Week</b> <i>10-09-2008</i>	72.90	27.10	10.54	0.47	0.00	0.00
<b>3 Months Ago</b> <i>07-17-2008</i>	44.05	55.95	27.90	0.07	0.00	0.00
<b>Start of Calendar Year</b> <i>01-03-2008</i>	27.45	72.55	49.72	32.21	0.00	0.00
<b>Start of Water Year</b> <i>10-02-2008</i>	72.90	27.10	14.84	0.47	0.00	0.00
<b>One Year Ago</b> <i>10-18-2007</i>	19.23	80.77	63.24	43.57	24.87	0.00

***Intensity:***

- None
- D0 Abnormally Dry
- D1 Moderate Drought
- D2 Severe Drought
- D3 Extreme Drought
- D4 Exceptional Drought

*The Drought Monitor focuses on broad-scale conditions. Local conditions may vary. For more information on the Drought Monitor, go to <https://droughtmonitor.unl.edu/About.aspx>*

***Author:***

Richard Tinker  
 CPC/NOAA/NWS/NCEP

