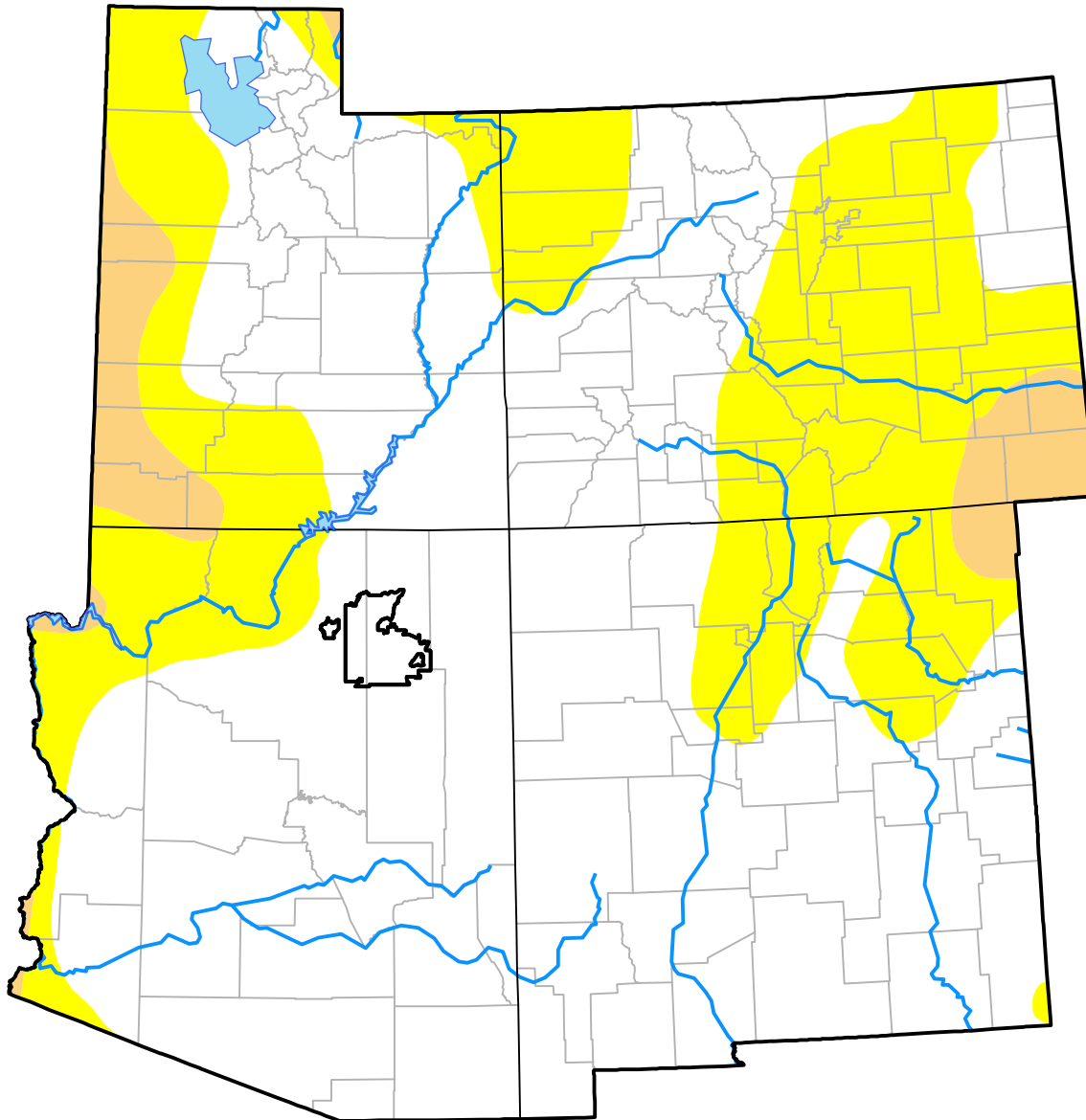


U.S. Drought Monitor Hopi RDEWS

October 14, 2008
(Released Thursday, Oct. 16, 2008)
Valid 8 a.m. EDT



Drought Conditions (Percent Area)

	None	D0	D1	D2	D3	D4
Current	100.00	0.00	0.00	0.00	0.00	0.00
Last Week <i>10-09-2008</i>	100.00	0.00	0.00	0.00	0.00	0.00
3 Months Ago <i>07-17-2008</i>	100.00	0.00	0.00	0.00	0.00	0.00
Start of Calendar Year <i>01-03-2008</i>	0.00	91.16	8.84	0.00	0.00	0.00
Start of Water Year <i>10-02-2008</i>	100.00	0.00	0.00	0.00	0.00	0.00
One Year Ago <i>10-18-2007</i>	0.00	64.93	35.07	0.00	0.00	0.00

Intensity:



The Drought Monitor focuses on broad-scale conditions. Local conditions may vary. For more information on the Drought Monitor, go to <https://droughtmonitor.unl.edu/About.aspx>

Author:

Richard Tinker
CPC/NOAA/NWS/NCEP



droughtmonitor.unl.edu