

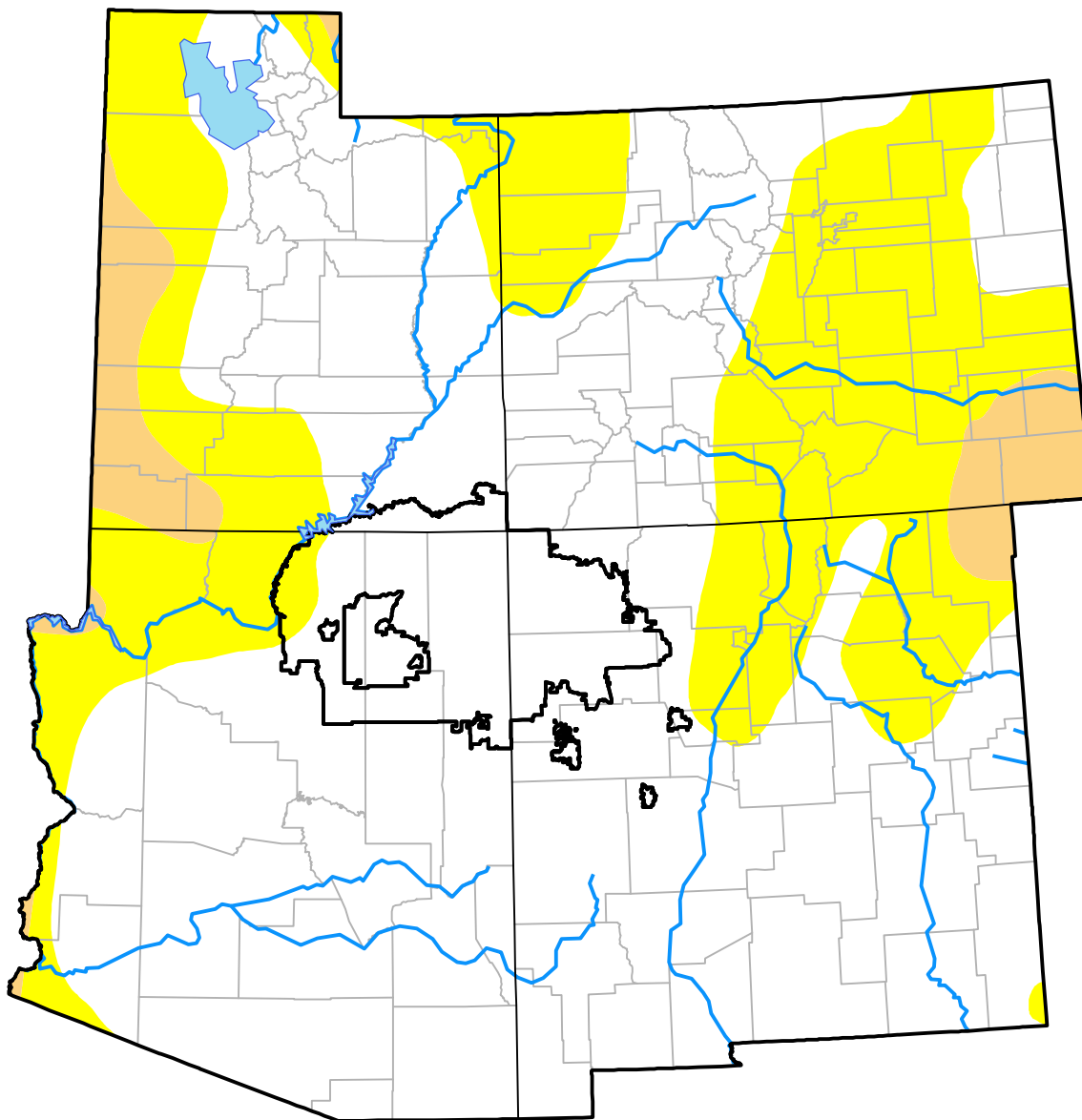
Nebraska RDEWS and Surrounding Areas

(Released Thursday, Oct. 16, 2008)

Valid 8 a.m. EDT

Drought Conditions (Percent Area)

	None	D0-D4	D1-D4	D2-D4	D3-D4	D4
Current	68.04	31.96	4.63	0.00	0.00	0.00
Last Week <i>10-09-2008</i>	65.11	34.89	6.15	0.82	0.00	0.00
3 Months Ago <i>07-17-2008</i>	46.46	53.54	24.52	7.55	1.12	0.30
Start of Calendar Year <i>01-03-2008</i>	39.45	60.55	31.68	19.53	0.00	0.00
Start of Water Year <i>10-02-2008</i>	65.11	34.89	6.92	0.82	0.00	0.00
One Year Ago <i>10-18-2007</i>	46.34	53.66	35.48	22.75	7.29	0.00



Intensity:

- None
- D0 Abnormally Dry
- D1 Moderate Drought
- D2 Severe Drought
- D3 Extreme Drought
- D4 Exceptional Drought

The Drought Monitor focuses on broad-scale conditions. Local conditions may vary. For more information on the Drought Monitor, go to <https://droughtmonitor.unl.edu/About.aspx>

Author:

Richard Tinker
CPC/NOAA/NWS/NCEP

