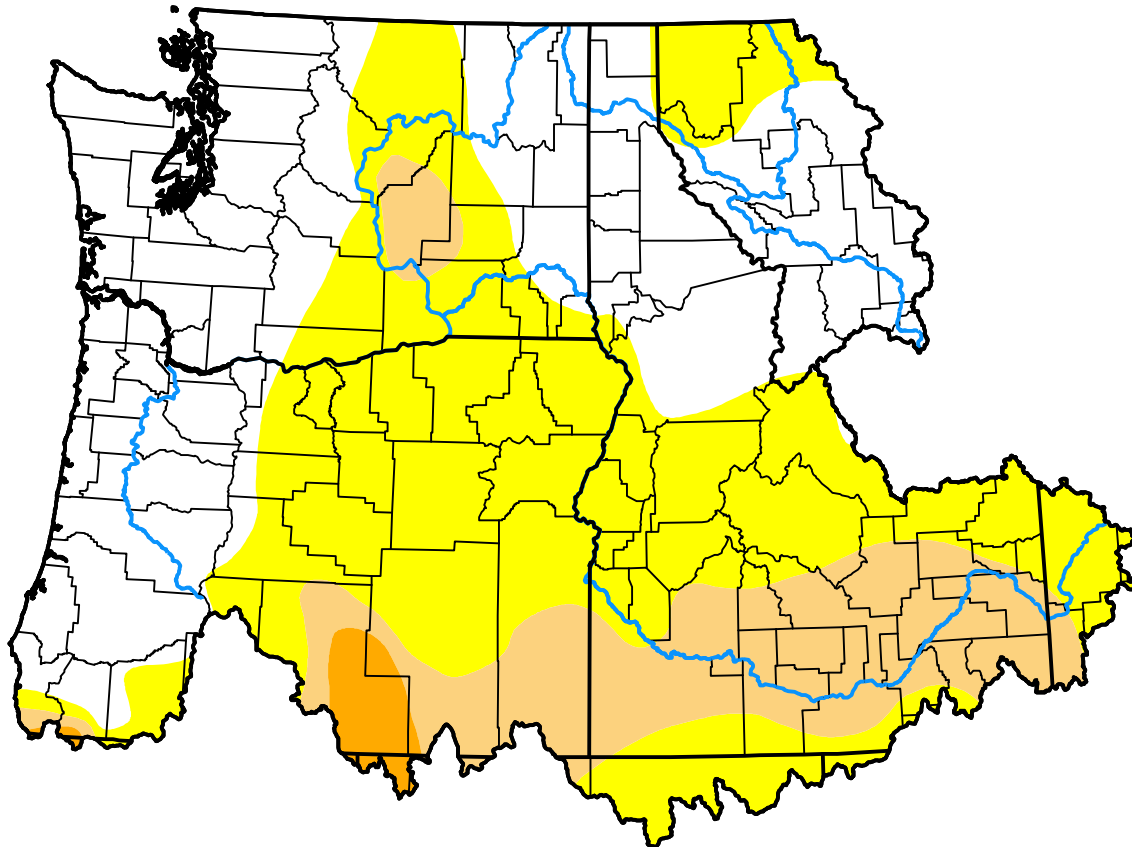


U.S. Drought Monitor Northwest RFC

October 14, 2008
(Released Thursday, Oct. 16, 2008)
Valid 8 a.m. EDT

Drought Conditions (Percent Area)

	None	D0-D4	D1-D4	D2-D4	D3-D4	D4
Current	40.61	59.39	17.48	1.69	0.00	0.00
Last Week <i>10-09-2008</i>	40.35	59.65	17.56	1.67	0.00	0.00
3 Months Ago <i>07-17-2008</i>	51.69	48.31	18.89	1.69	0.00	0.00
Start of Calendar Year <i>01-03-2008</i>	40.26	59.74	52.17	23.86	0.00	0.00
Start of Water Year <i>10-02-2008</i>	37.13	62.87	17.52	1.62	0.00	0.00
One Year Ago <i>10-18-2007</i>	20.16	79.84	59.59	52.57	14.79	0.00



Intensity:



The Drought Monitor focuses on broad-scale conditions. Local conditions may vary. For more information on the Drought Monitor, go to <https://droughtmonitor.unl.edu/About.aspx>

Author:

Richard Tinker
CPC/NOAA/NWS/NCEP



droughtmonitor.unl.edu