

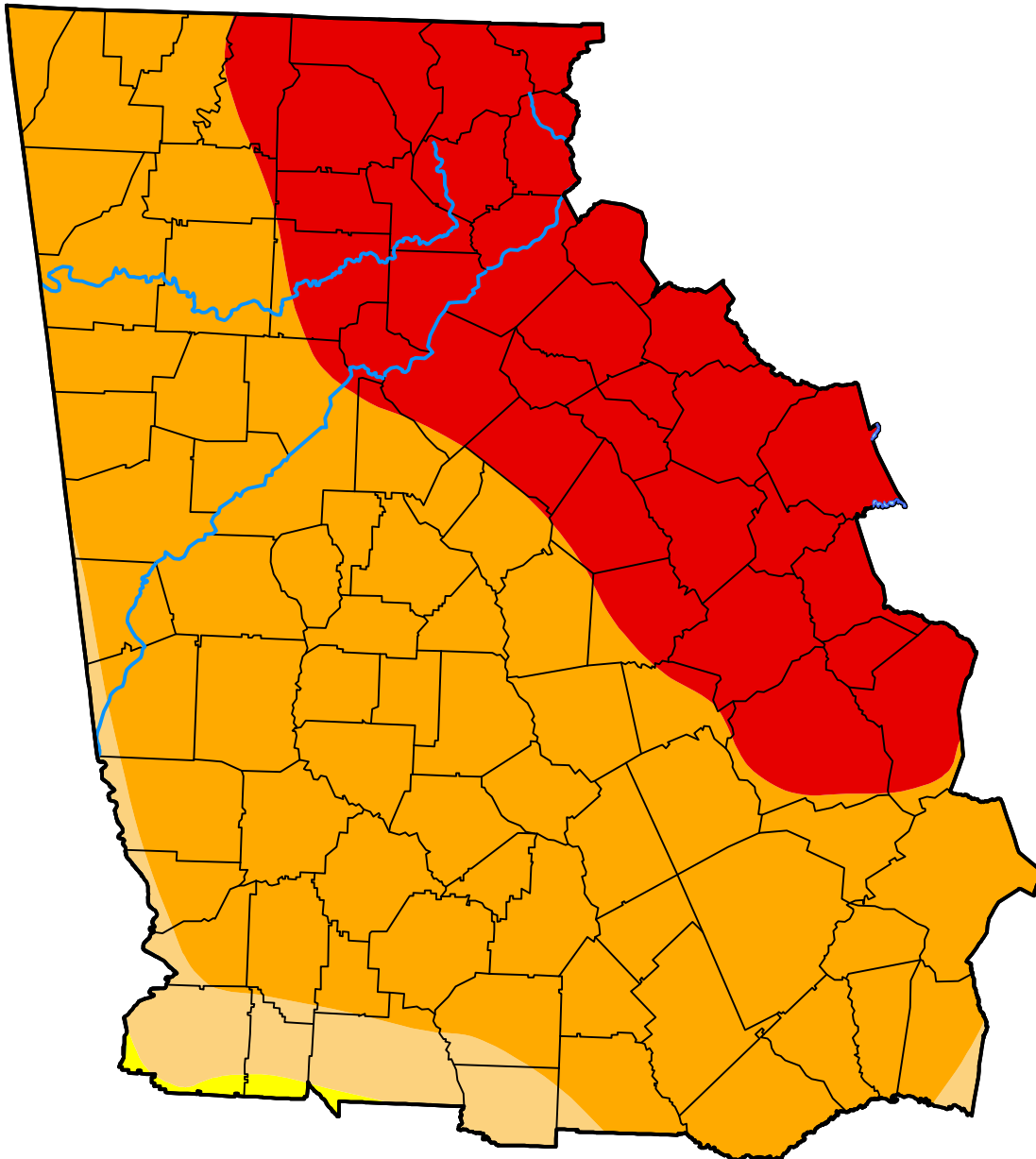
U.S. Drought Monitor

Peachtree City, GA WFO

October 14, 2008
 (Released Thursday, Oct. 16, 2008)
 Valid 8 a.m. EDT

Drought Conditions (Percent Area)

	None	D0	D1	D2	D3	D4
Current	0.00	0.45	5.36	62.77	31.42	0.00
Last Week <i>10-09-2008</i>	0.00	0.32	4.80	63.48	31.41	0.00
3 Months Ago <i>07-17-2008</i>	0.00	6.06	11.31	62.02	20.62	0.00
Start of Calendar Year <i>01-03-2008</i>	0.00	7.99	8.84	12.58	44.00	26.59
Start of Water Year <i>10-02-2008</i>	0.00	0.32	4.80	63.48	31.41	0.00
One Year Ago <i>10-18-2007</i>	9.30	8.09	6.97	13.86	12.15	49.64



Intensity:

- None
- D0 Abnormally Dry
- D1 Moderate Drought
- D2 Severe Drought
- D3 Extreme Drought
- D4 Exceptional Drought

The Drought Monitor focuses on broad-scale conditions. Local conditions may vary. For more information on the Drought Monitor, go to <https://droughtmonitor.unl.edu/About.aspx>

Author:

Richard Tinker
 CPC/NOAA/NWS/NCEP

