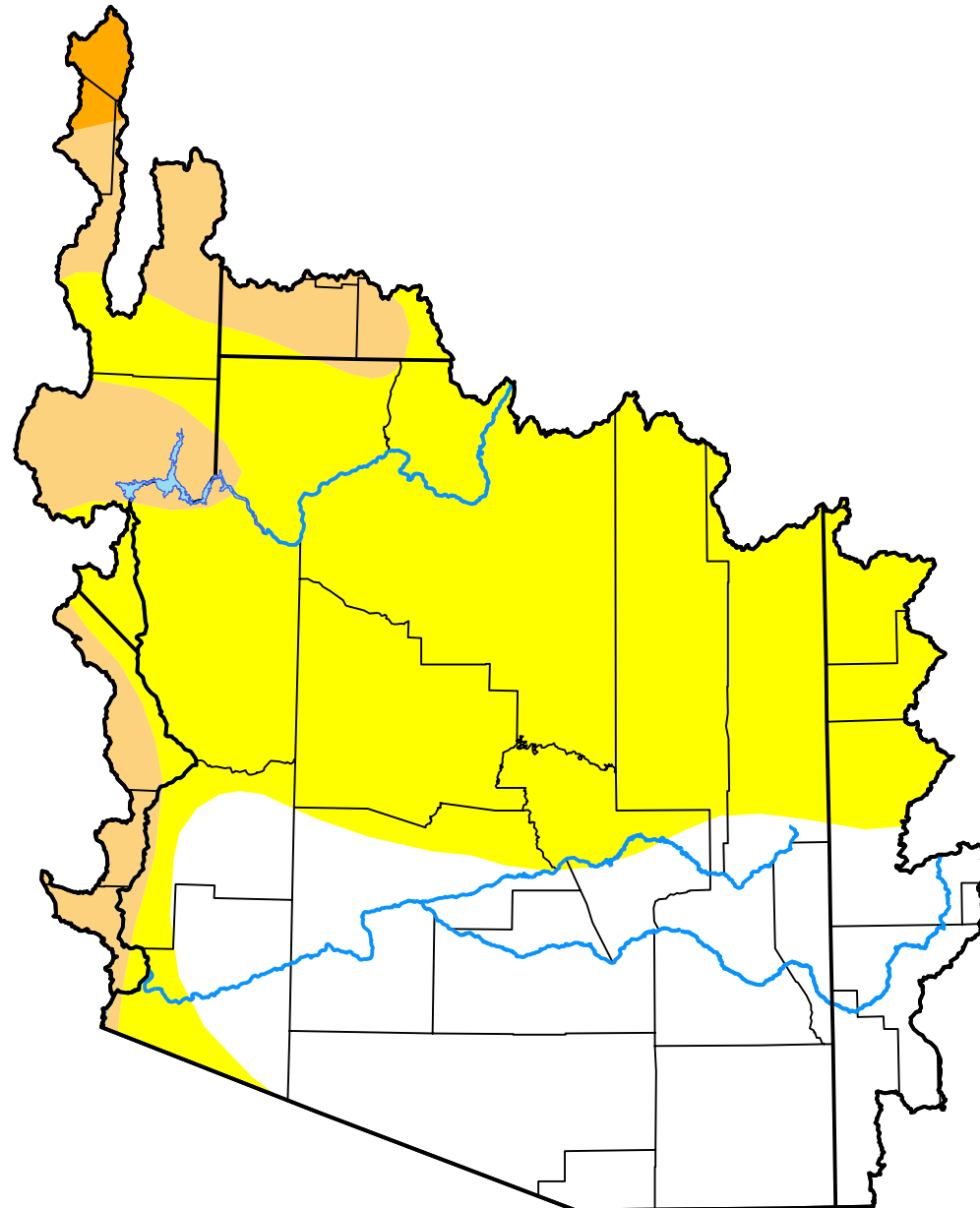


U.S. Drought Monitor

Lower Colorado Watershed

December 16, 2008
 (Released Thursday, Dec. 18, 2008)
 Valid 7 a.m. EST



Drought Conditions (Percent Area)

	None	D0	D1	D2	D3	D4
Current	37.72	51.30	10.21	0.77	0.00	0.00
Last Week <i>12-11-2008</i>	37.72	51.30	10.21	0.77	0.00	0.00
3 Months Ago <i>09-18-2008</i>	72.90	12.26	14.36	0.47	0.00	0.00
Start of Calendar Year <i>01-03-2008</i>	27.45	22.83	17.51	32.21	0.00	0.00
Start of Water Year <i>10-02-2008</i>	72.90	12.26	14.36	0.47	0.00	0.00
One Year Ago <i>12-20-2007</i>	27.45	22.82	17.52	32.21	0.00	0.00

Intensity:

- None
- D0 Abnormally Dry
- D1 Moderate Drought
- D2 Severe Drought
- D3 Extreme Drought
- D4 Exceptional Drought

The Drought Monitor focuses on broad-scale conditions. Local conditions may vary. For more information on the Drought Monitor, go to <https://droughtmonitor.unl.edu/About.aspx>

Author:

Jay Lawrimore
 NOAA/NESDIS/NCEI



droughtmonitor.unl.edu