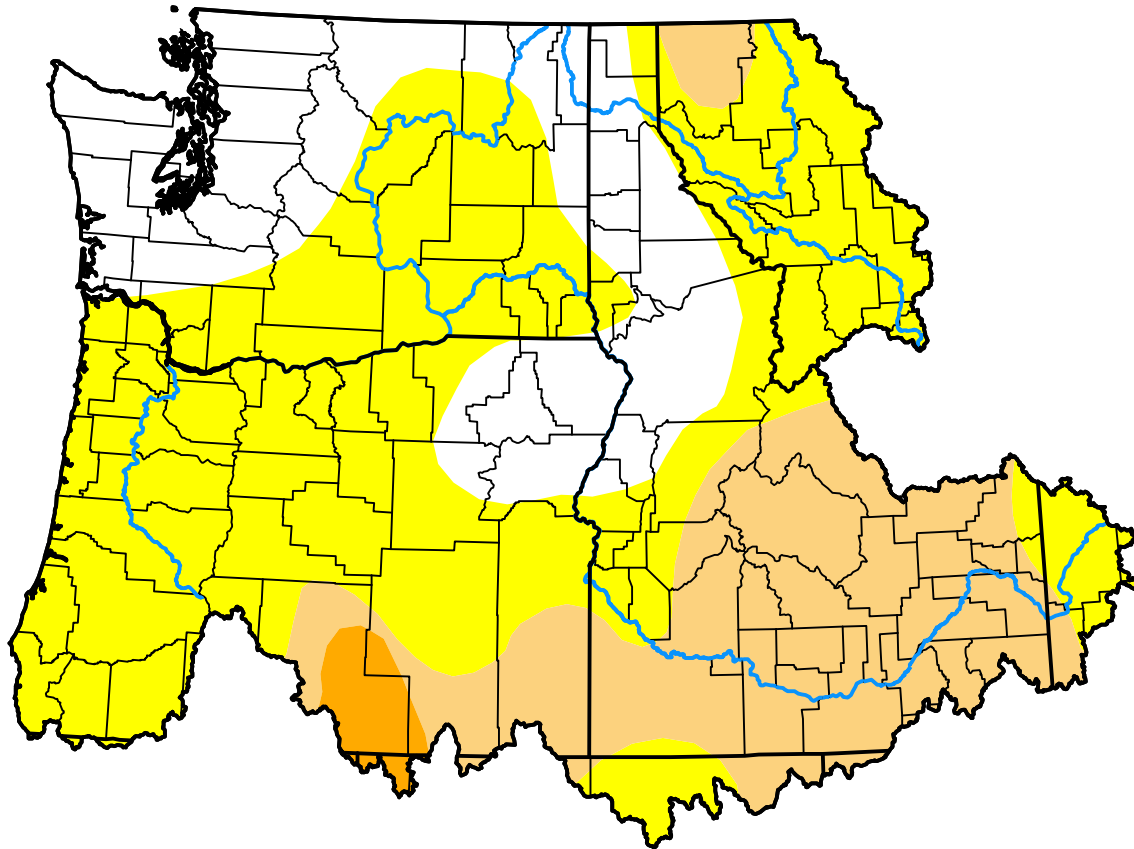


U.S. Drought Monitor

Pacific Northwest Watershed

December 16, 2008
 (Released Thursday, Dec. 18, 2008)
 Valid 7 a.m. EST



Drought Conditions (Percent Area)

	None	D0	D1	D2	D3	D4
Current	23.08	51.92	23.23	1.77	0.00	0.00
Last Week <i>12-11-2008</i>	46.16	29.85	22.22	1.77	0.00	0.00
3 Months Ago <i>09-18-2008</i>	29.96	50.87	17.55	1.62	0.00	0.00
Start of Calendar Year <i>01-03-2008</i>	40.25	7.57	28.32	23.87	0.00	0.00
Start of Water Year <i>10-02-2008</i>	37.11	45.39	15.88	1.62	0.00	0.00
One Year Ago <i>12-20-2007</i>	40.25	7.57	28.32	23.87	0.00	0.00

Intensity:

- None
- D0 Abnormally Dry
- D1 Moderate Drought
- D2 Severe Drought
- D3 Extreme Drought
- D4 Exceptional Drought

The Drought Monitor focuses on broad-scale conditions. Local conditions may vary. For more information on the Drought Monitor, go to <https://droughtmonitor.unl.edu/About.aspx>

Author:

Jay Lawrimore
 NOAA/NESDIS/NCEI

