

U.S. Drought Monitor

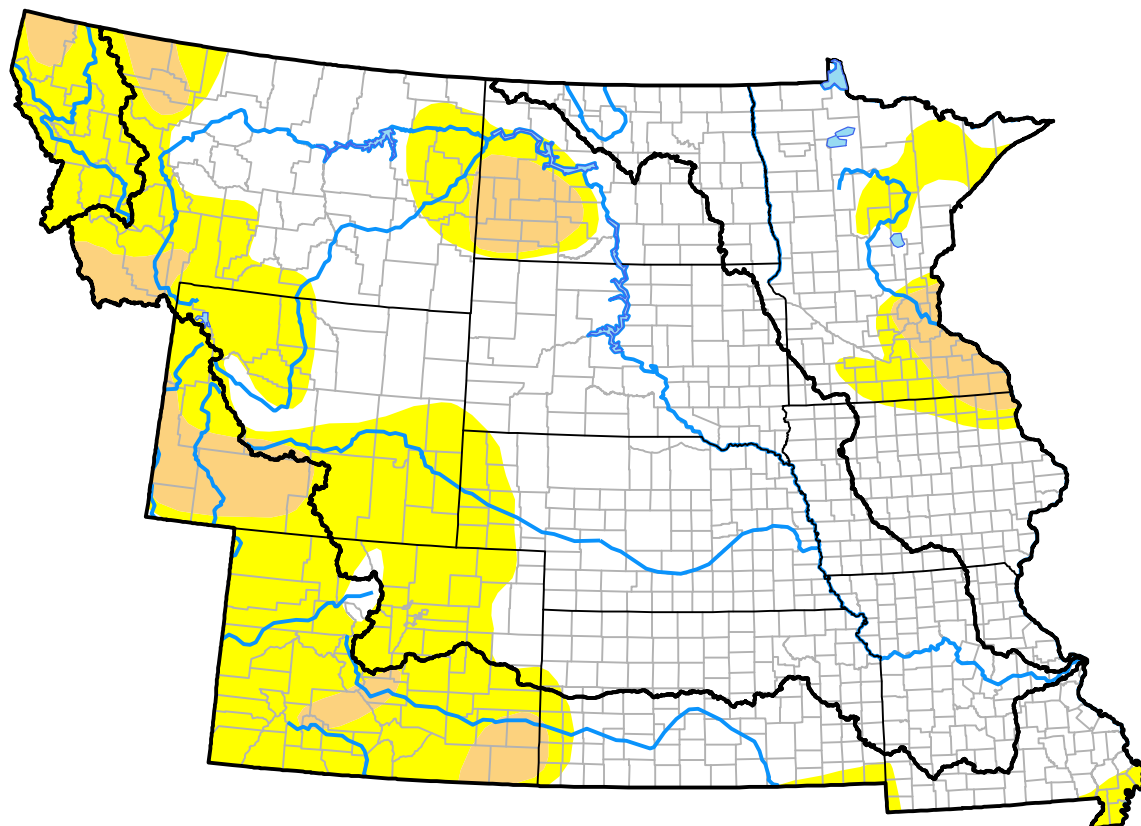
Missouri River Basin RDEWS

December 16, 2008
(Released Thursday, Dec. 18, 2008)

Valid 7 a.m. EST

Drought Conditions (Percent Area)

	None	D0-D4	D1-D4	D2-D4	D3-D4	D4
Current	72.16	27.84	4.82	0.00	0.00	0.00
Last Week <i>12-11-2008</i>	71.75	28.25	5.10	0.00	0.00	0.00
3 Months Ago <i>09-18-2008</i>	54.34	45.66	9.40	4.10	1.93	0.00
Start of Calendar Year <i>01-03-2008</i>	40.34	59.66	34.09	11.39	0.26	0.00
Start of Water Year <i>10-02-2008</i>	65.90	34.10	7.71	3.79	1.93	0.00
One Year Ago <i>12-20-2007</i>	40.34	59.66	33.94	11.52	0.26	0.00



Intensity:



The Drought Monitor focuses on broad-scale conditions. Local conditions may vary. For more information on the Drought Monitor, go to <https://droughtmonitor.unl.edu/About.aspx>

Author:

Jay Lawrimore
 NOAA/NESDIS/NCEI



droughtmonitor.unl.edu