

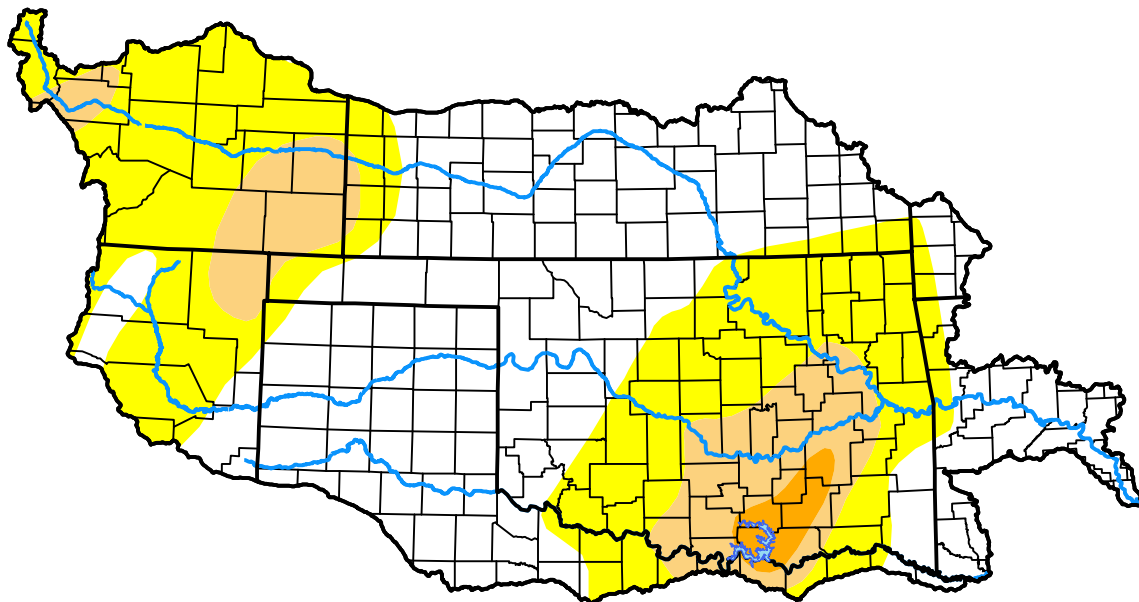
U.S. Drought Monitor

Arkansas Red Basin RFC

December 16, 2008
 (Released Thursday, Dec. 18, 2008)
 Valid 7 a.m. EST

Drought Conditions (Percent Area)

	None	D0	D1	D2	D3	D4
Current	52.06	34.46	11.90	1.58	0.00	0.00
Last Week <i>12-11-2008</i>	56.24	30.29	11.90	1.58	0.00	0.00
3 Months Ago <i>09-18-2008</i>	67.35	20.10	10.33	2.21	0.00	0.00
Start of Calendar Year <i>01-03-2008</i>	59.68	31.09	9.23	0.00	0.00	0.00
Start of Water Year <i>10-02-2008</i>	62.57	24.89	9.31	3.23	0.00	0.00
One Year Ago <i>12-20-2007</i>	59.68	31.09	9.23	0.00	0.00	0.00



Intensity:



The Drought Monitor focuses on broad-scale conditions. Local conditions may vary. For more information on the Drought Monitor, go to <https://droughtmonitor.unl.edu/About.aspx>

Author:

Jay Lawrimore
 NOAA/NESDIS/NCEI



droughtmonitor.unl.edu