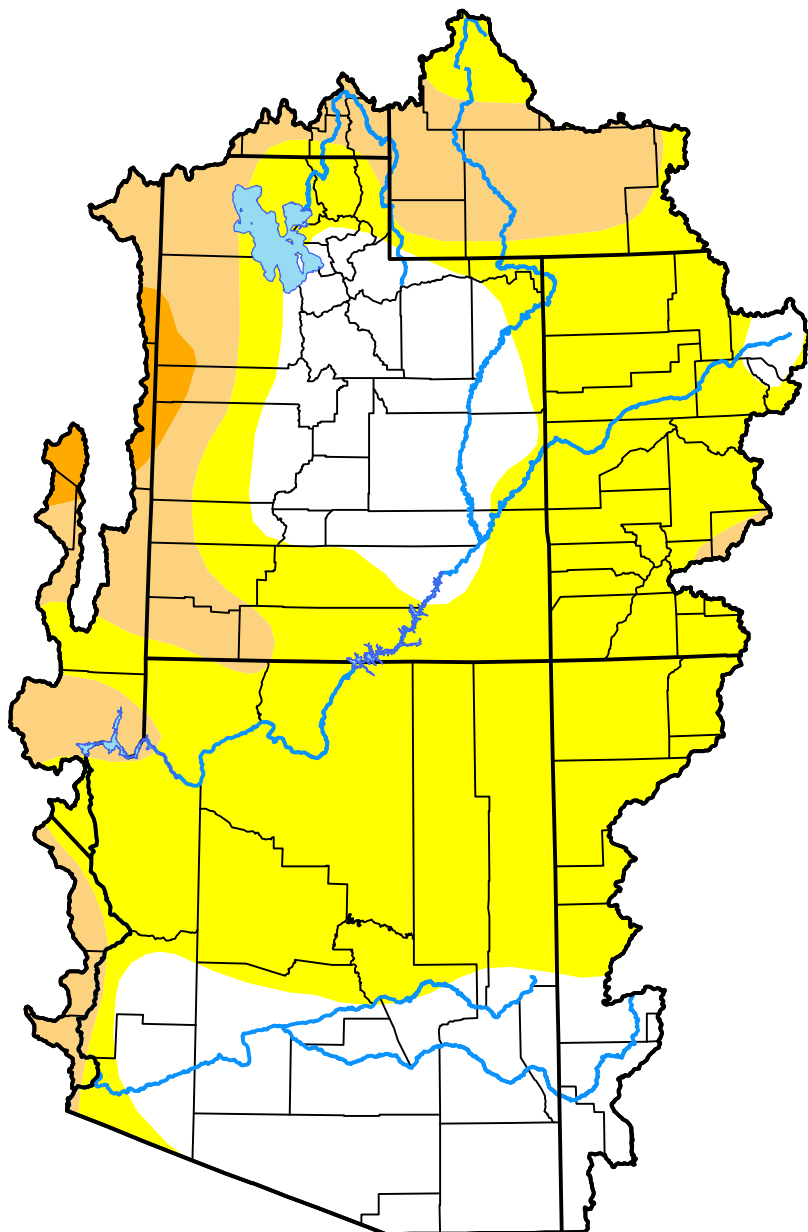


U.S. Drought Monitor

Colorado Basin RFC

December 16, 2008
 (Released Thursday, Dec. 18, 2008)

Valid 7 a.m. EST



Drought Conditions (Percent Area)

	None	D0-D4	D1-D4	D2-D4	D3-D4	D4
Current	29.44	70.56	17.18	1.34	0.00	0.00
Last Week <i>12-11-2008</i>	29.44	70.56	17.18	1.34	0.00	0.00
3 Months Ago <i>09-18-2008</i>	64.78	35.22	15.42	2.58	0.00	0.00
Start of Calendar Year <i>01-03-2008</i>	27.57	72.43	57.67	39.05	0.00	0.00
Start of Water Year <i>10-02-2008</i>	64.78	35.22	15.98	0.39	0.00	0.00
One Year Ago <i>12-20-2007</i>	27.57	72.43	57.67	39.05	0.00	0.00

Intensity:

- None
- D0 Abnormally Dry
- D1 Moderate Drought
- D2 Severe Drought
- D3 Extreme Drought
- D4 Exceptional Drought

The Drought Monitor focuses on broad-scale conditions. Local conditions may vary. For more information on the Drought Monitor, go to <https://droughtmonitor.unl.edu/About.aspx>

Author:

Jay Lawrimore
 NOAA/NESDIS/NCEI



droughtmonitor.unl.edu