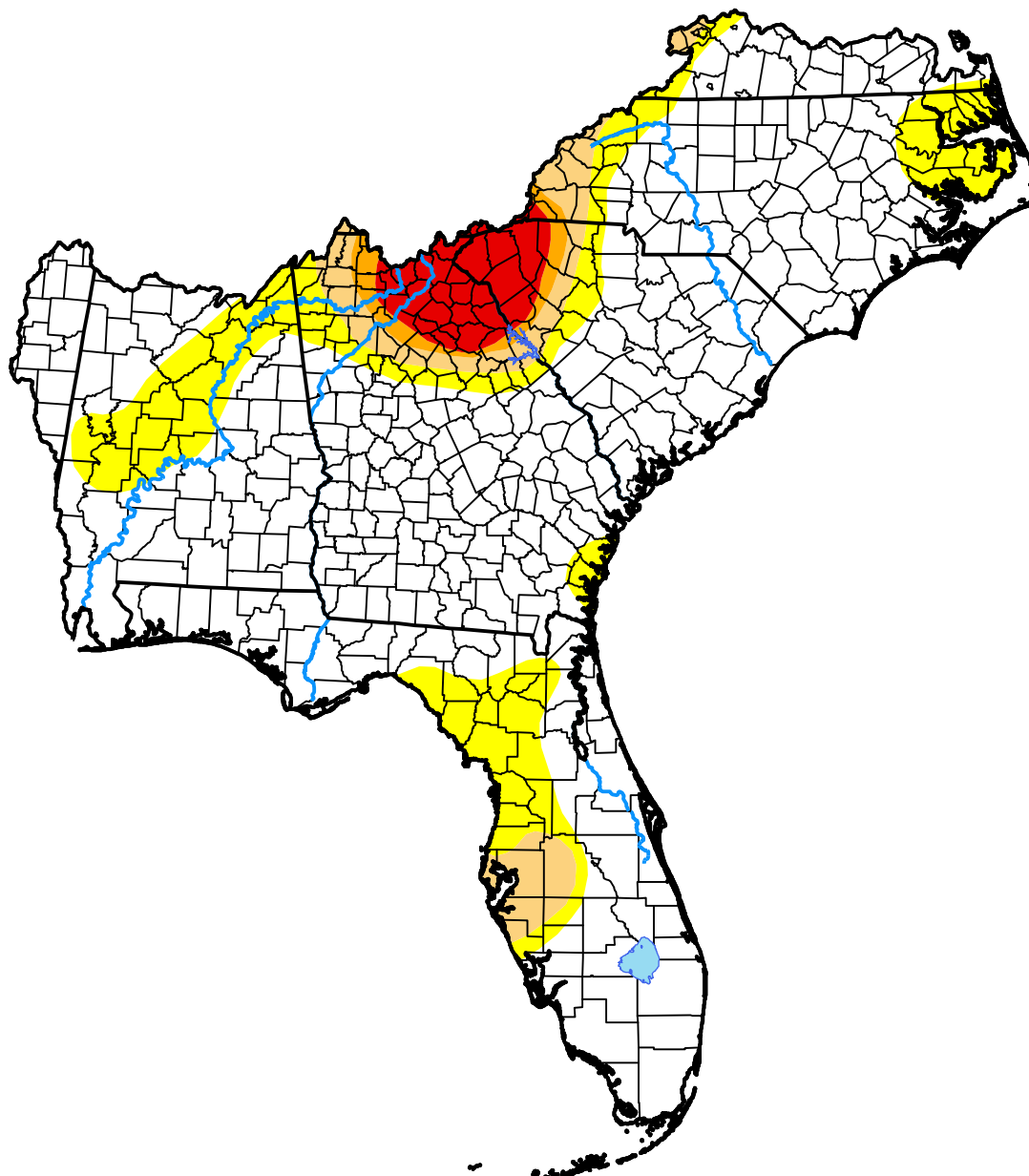


# U.S. Drought Monitor Southeast RFC

**December 16, 2008**  
(Released Thursday, Dec. 18, 2008)

Valid 7 a.m. EST



*Drought Conditions (Percent Area)*

	None	D0-D4	D1-D4	D2-D4	D3-D4	D4
<b>Current</b>	74.76	25.24	9.85	5.11	3.83	0.00
<b>Last Week</b> <i>12-11-2008</i>	54.98	45.02	20.99	10.61	6.20	3.92
<b>3 Months Ago</b> <i>09-18-2008</i>	43.91	56.09	32.08	16.53	5.74	1.73
<b>Start of Calendar Year</b> <i>01-03-2008</i>	9.59	90.41	73.33	59.77	41.11	20.52
<b>Start of Water Year</b> <i>10-02-2008</i>	34.38	65.62	39.71	20.60	8.62	2.15
<b>One Year Ago</b> <i>12-20-2007</i>	8.99	91.01	78.04	64.66	49.15	36.55

***Intensity:***



*The Drought Monitor focuses on broad-scale conditions. Local conditions may vary. For more information on the Drought Monitor, go to <https://droughtmonitor.unl.edu/About.aspx>*

***Author:***

Jay Lawrimore  
NOAA/NESDIS/NCEI

