

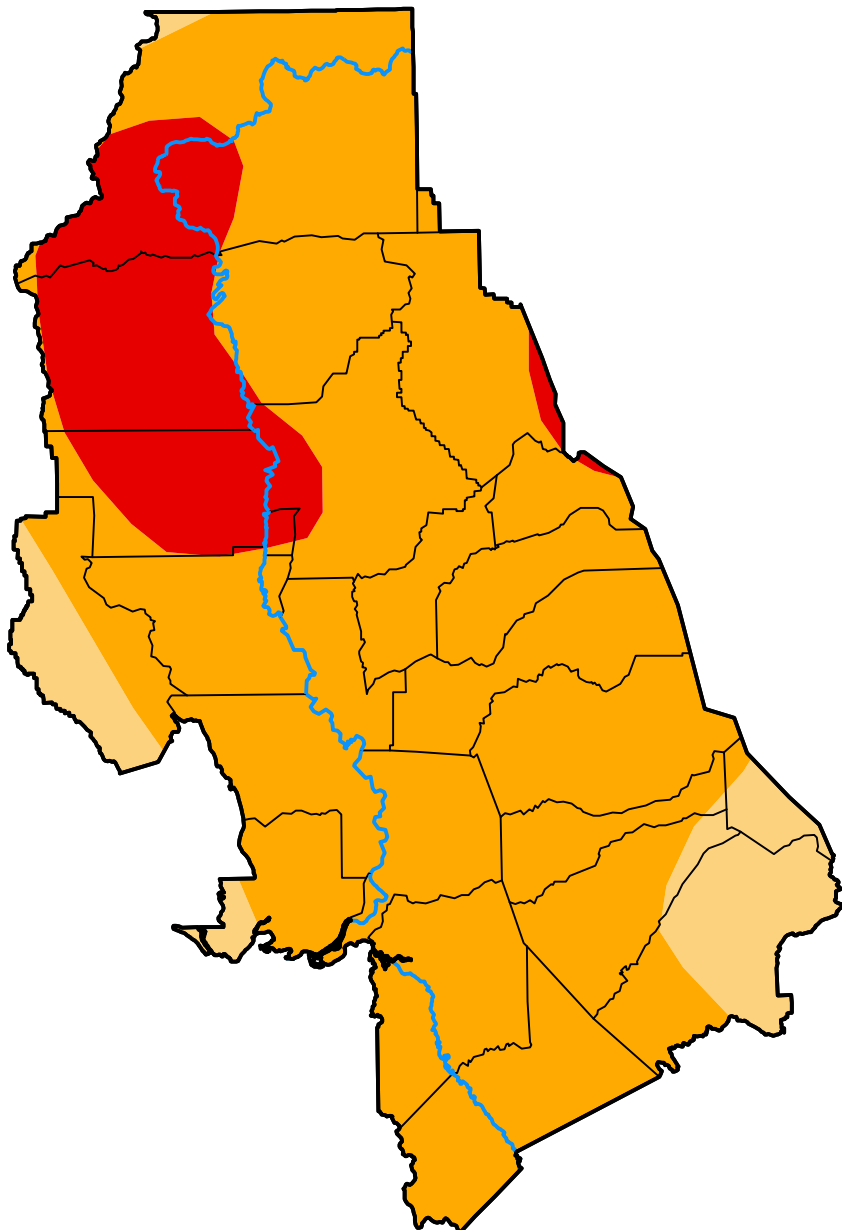
U.S. Drought Monitor Sacramento, CA WFO

December 16, 2008
(Released Thursday, Dec. 18, 2008)

Valid 7 a.m. EST

Drought Conditions (Percent Area)

	None	D0-D4	D1-D4	D2-D4	D3-D4	D4
Current	0.00	100.00	100.00	91.46	14.64	0.00
Last Week <i>12-11-2008</i>	0.00	100.00	100.00	89.06	0.38	0.00
3 Months Ago <i>09-18-2008</i>	0.00	100.00	100.00	86.45	0.00	0.00
Start of Calendar Year <i>01-03-2008</i>	1.69	98.31	80.74	7.38	0.00	0.00
Start of Water Year <i>10-02-2008</i>	0.00	100.00	100.00	86.45	11.40	0.00
One Year Ago <i>12-20-2007</i>	1.69	98.31	80.74	7.38	0.00	0.00



Intensity:



The Drought Monitor focuses on broad-scale conditions. Local conditions may vary. For more information on the Drought Monitor, go to <https://droughtmonitor.unl.edu/About.aspx>

Author:

Jay Lawrimore
NOAA/NESDIS/NCEI



droughtmonitor.unl.edu