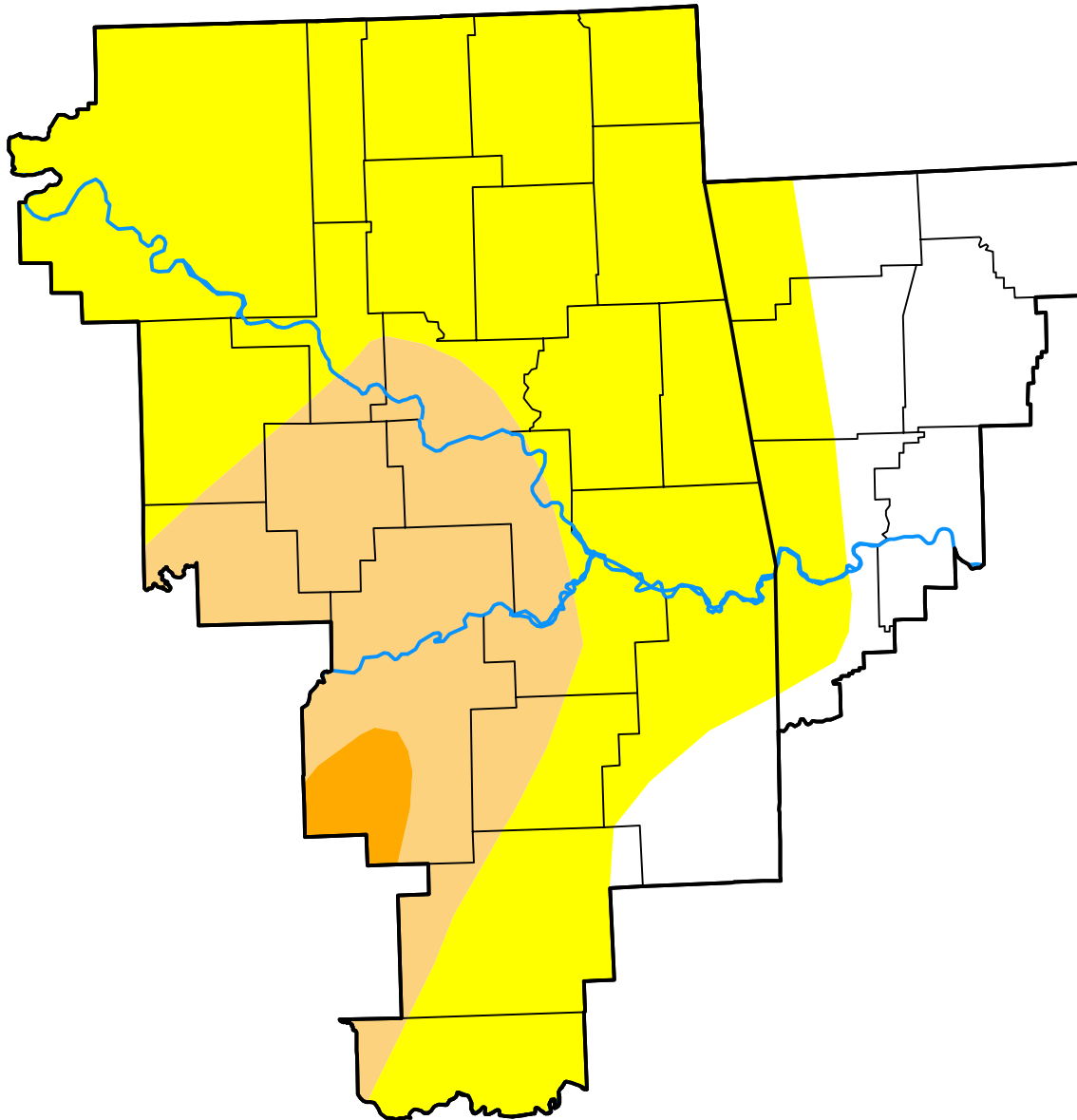


U.S. Drought Monitor Tulsa, OK WFO

December 16, 2008
(Released Thursday, Dec. 18, 2008)
Valid 7 a.m. EST



Drought Conditions (Percent Area)

	None	D0	D1	D2	D3	D4
Current	16.96	61.46	20.02	1.55	0.00	0.00
Last Week <i>12-11-2008</i>	32.92	45.51	20.02	1.55	0.00	0.00
3 Months Ago <i>09-18-2008</i>	100.00	0.00	0.00	0.00	0.00	0.00
Start of Calendar Year <i>01-03-2008</i>	99.12	0.88	0.00	0.00	0.00	0.00
Start of Water Year <i>10-02-2008</i>	100.00	0.00	0.00	0.00	0.00	0.00
One Year Ago <i>12-20-2007</i>	99.12	0.88	0.00	0.00	0.00	0.00

Intensity:

- None
- D0 Abnormally Dry
- D1 Moderate Drought
- D2 Severe Drought
- D3 Extreme Drought
- D4 Exceptional Drought

The Drought Monitor focuses on broad-scale conditions. Local conditions may vary. For more information on the Drought Monitor, go to <https://droughtmonitor.unl.edu/About.aspx>

Author:

Jay Lawrimore
NOAA/NESDIS/NCEI

