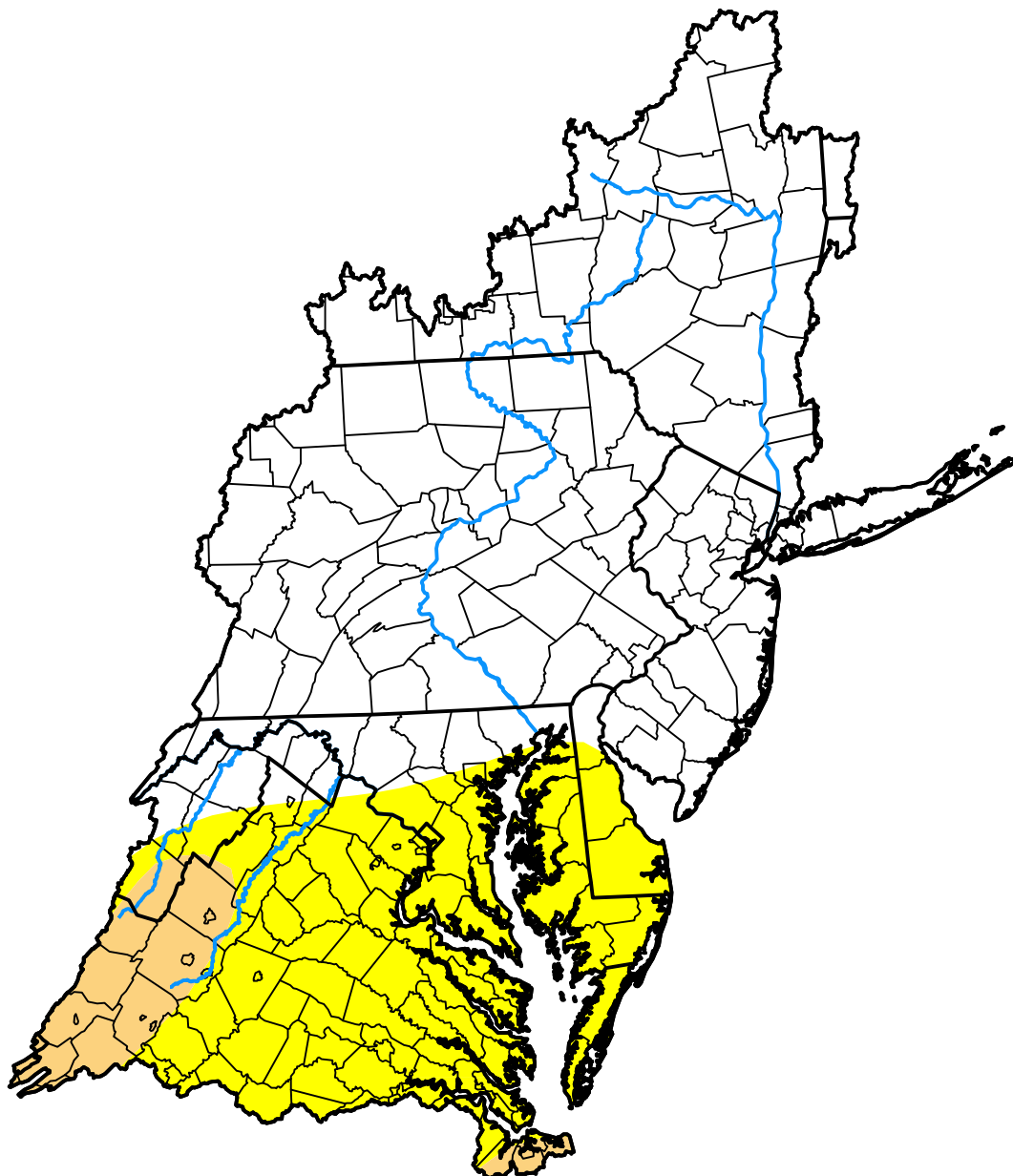


U.S. Drought Monitor

Mid Atlantic Watershed

February 24, 2009
 (Released Thursday, Feb. 26, 2009)

Valid 7 a.m. EST



Drought Conditions (Percent Area)

	None	D0	D1	D2	D3	D4
Current	68.55	25.91	5.54	0.00	0.00	0.00
Last Week <i>02-19-2009</i>	68.55	25.91	5.54	0.00	0.00	0.00
3 Months Ago <i>11-26-2008</i>	83.14	15.72	1.12	0.01	0.00	0.00
Start of Calendar Year <i>01-01-2009</i>	91.47	5.11	3.42	0.00	0.00	0.00
Start of Water Year <i>10-02-2008</i>	83.63	14.71	1.66	0.00	0.00	0.00
One Year Ago <i>02-28-2008</i>	70.80	10.74	11.56	6.90	0.00	0.00

Intensity:

- None
- D0 Abnormally Dry
- D1 Moderate Drought
- D2 Severe Drought
- D3 Extreme Drought
- D4 Exceptional Drought

The Drought Monitor focuses on broad-scale conditions. Local conditions may vary. For more information on the Drought Monitor, go to <https://droughtmonitor.unl.edu/About.aspx>

Author:

Richard Tinker
 CPC/NOAA/NWS/NCEP

