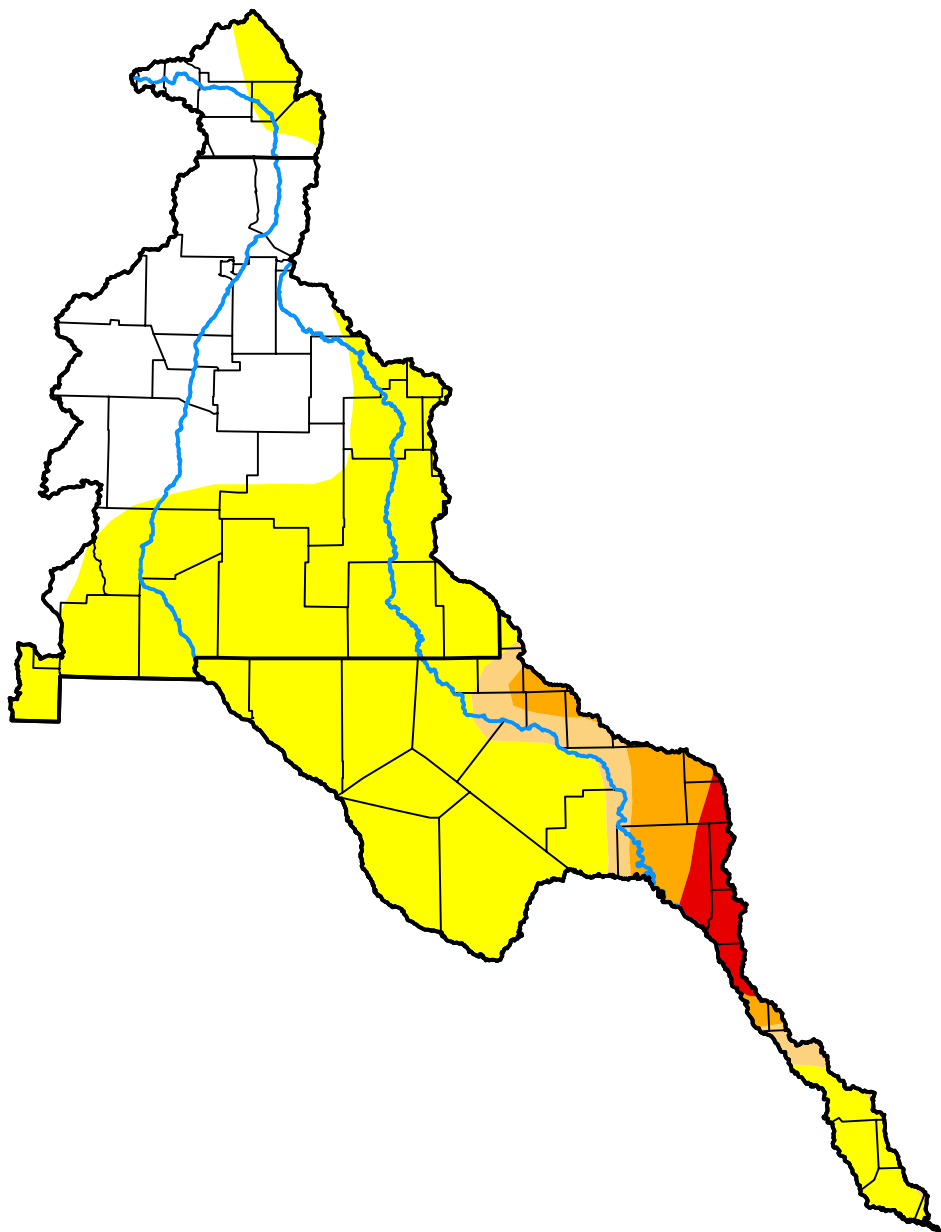


# U.S. Drought Monitor

## Rio Grande Watershed

**February 24, 2009**  
 (Released Thursday, Feb. 26, 2009)

Valid 7 a.m. EST



*Drought Conditions (Percent Area)*

	None	D0	D1	D2	D3	D4
<b>Current</b>	31.02	57.91	3.99	4.58	2.50	0.00
<b>Last Week</b> <i>02-19-2009</i>	31.02	57.91	3.99	4.58	2.50	0.00
<b>3 Months Ago</b> <i>11-26-2008</i>	72.23	23.03	3.37	1.37	0.00	0.00
<b>Start of Calendar Year</b> <i>01-01-2009</i>	71.45	23.81	3.37	1.37	0.00	0.00
<b>Start of Water Year</b> <i>10-02-2008</i>	77.02	20.26	2.25	0.47	0.00	0.00
<b>One Year Ago</b> <i>02-28-2008</i>	32.56	53.82	4.43	7.69	1.51	0.00

*Intensity:*



*The Drought Monitor focuses on broad-scale conditions. Local conditions may vary. For more information on the Drought Monitor, go to <https://droughtmonitor.unl.edu/About.aspx>*

*Author:*

Richard Tinker  
 CPC/NOAA/NWS/NCEP



**droughtmonitor.unl.edu**