

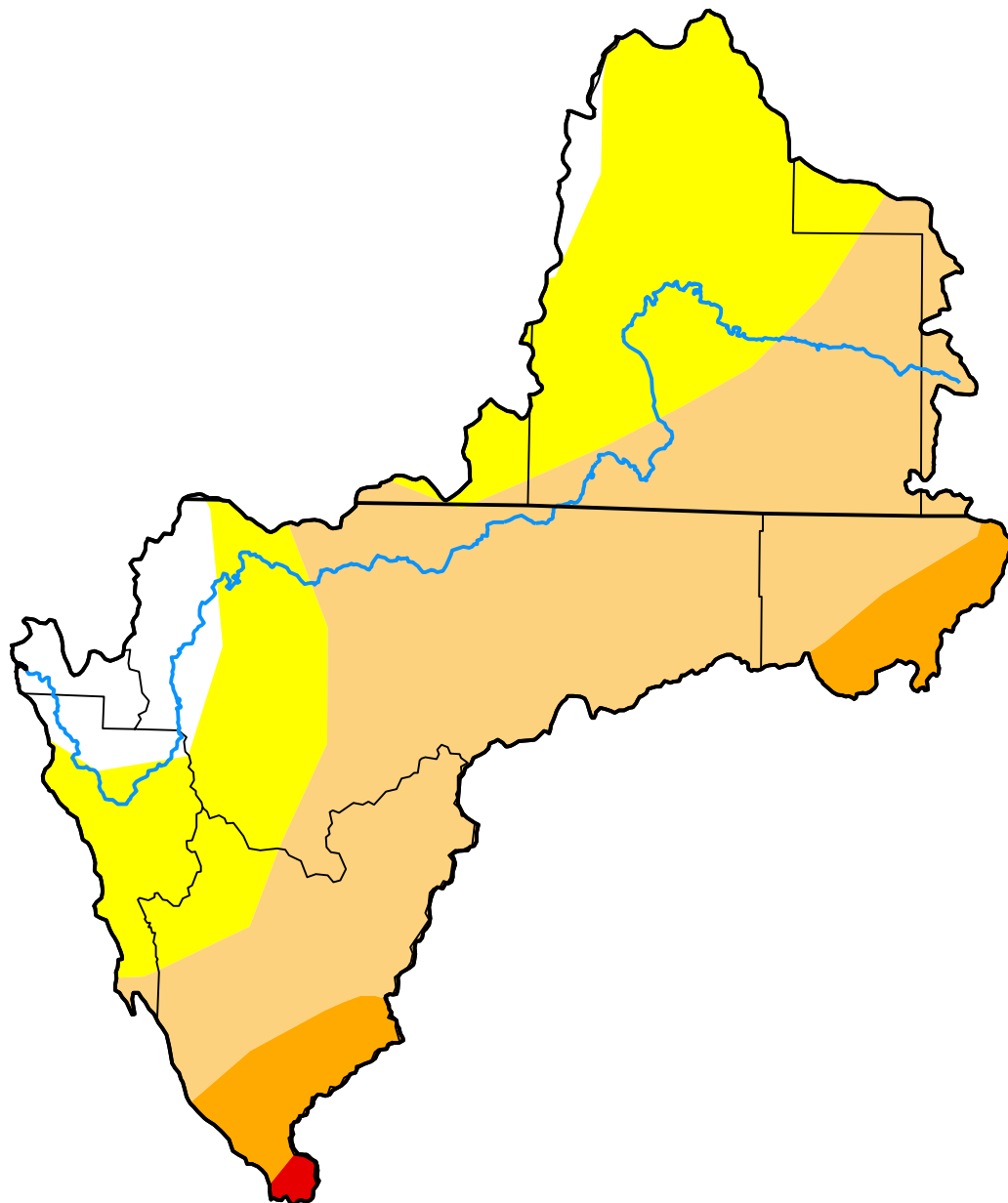
# U.S. Drought Monitor Klamath River Basin

**February 24, 2009**  
(Released Thursday, Feb. 26, 2009)

Valid 7 a.m. EST

*Drought Conditions (Percent Area)*

	None	D0	D1	D2	D3	D4
<b>Current</b>	7.46	34.10	51.31	6.76	0.37	0.00
<b>Last Week</b> <i>02-17-2009</i>	7.46	34.10	51.19	6.88	0.37	0.00
<b>3 Months Ago</b> <i>11-25-2008</i>	49.76	35.06	13.96	1.22	0.00	0.00
<b>Start of Calendar Year</b> <i>12-30-2008</i>	8.39	28.58	55.63	7.41	0.00	0.00
<b>Start of Water Year</b> <i>09-30-2008</i>	0.00	44.52	31.78	23.69	0.00	0.00
<b>One Year Ago</b> <i>02-26-2008</i>	84.45	11.12	3.91	0.52	0.00	0.00



***Intensity:***

- None
- D0 Abnormally Dry
- D1 Moderate Drought
- D2 Severe Drought
- D3 Extreme Drought
- D4 Exceptional Drought

*The Drought Monitor focuses on broad-scale conditions. Local conditions may vary. For more information on the Drought Monitor, go to <https://droughtmonitor.unl.edu/About.aspx>*

***Author:***

Richard Tinker  
CPC/NOAA/NWS/NCEP

