

# U.S. Drought Monitor

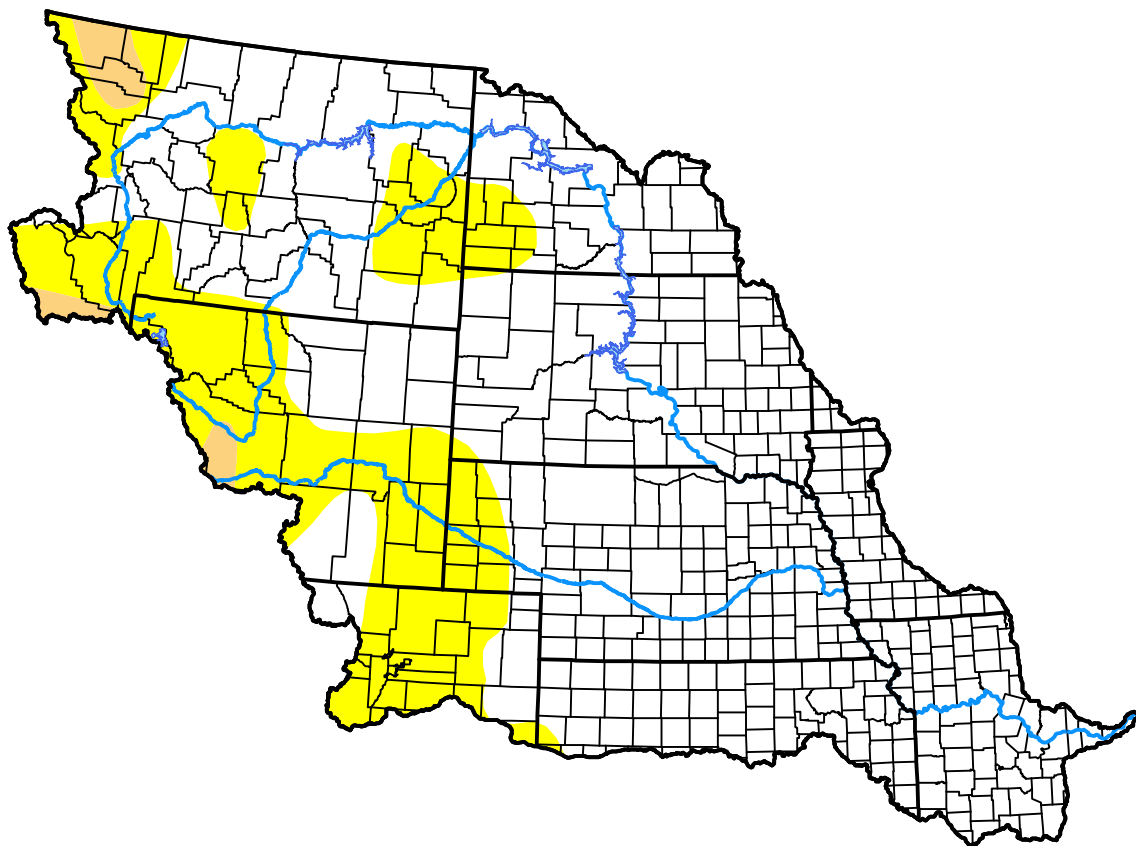
## Missouri Basin RFC

**February 24, 2009**  
*(Released Thursday, Feb. 26, 2009)*

Valid 7 a.m. EST

*Drought Conditions (Percent Area)*

	None	D0-D4	D1-D4	D2-D4	D3-D4	D4
<b>Current</b>	75.54	24.46	1.69	0.00	0.00	0.00
<b>Last Week</b> <i>02-19-2009</i>	75.26	24.74	1.01	0.00	0.00	0.00
<b>3 Months Ago</b> <i>11-26-2008</i>	75.06	24.94	5.12	0.00	0.00	0.00
<b>Start of Calendar Year</b> <i>01-01-2009</i>	72.14	27.86	3.55	0.00	0.00	0.00
<b>Start of Water Year</b> <i>10-02-2008</i>	65.89	34.11	7.71	3.79	1.93	0.00
<b>One Year Ago</b> <i>02-28-2008</i>	39.71	60.29	34.11	11.39	0.26	0.00



***Intensity:***

- None
- D0 Abnormally Dry
- D1 Moderate Drought
- D2 Severe Drought
- D3 Extreme Drought
- D4 Exceptional Drought

*The Drought Monitor focuses on broad-scale conditions. Local conditions may vary. For more information on the Drought Monitor, go to <https://droughtmonitor.unl.edu/About.aspx>*

***Author:***

Richard Tinker  
 CPC/NOAA/NWS/NCEP

