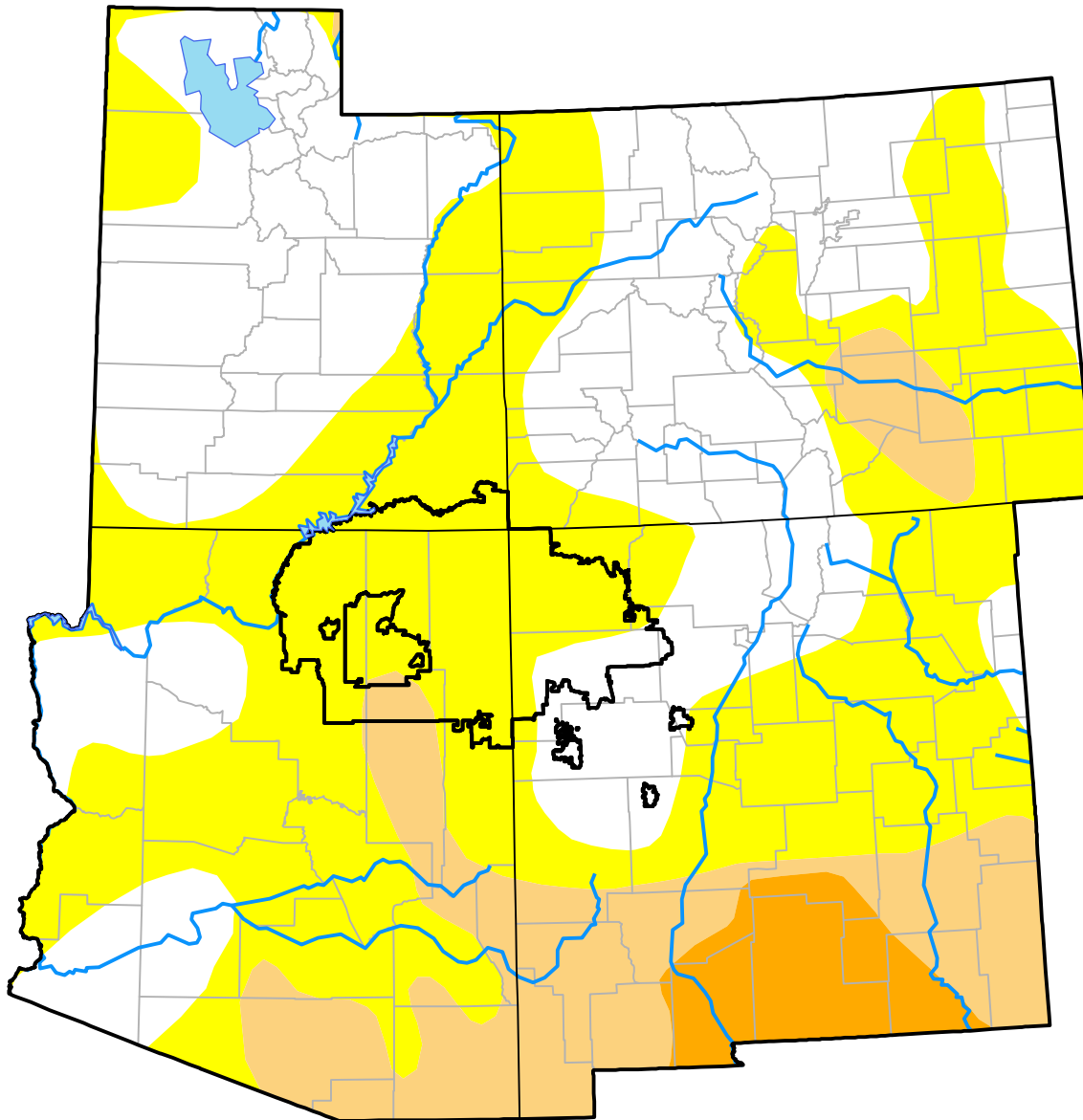


U.S. Drought Monitor Navajo RDEWS

May 5, 2009
(Released Thursday, May. 7, 2009)
Valid 8 a.m. EDT

Drought Conditions (Percent Area)

	None	D0	D1	D2	D3	D4
Current	11.36	84.72	3.92	0.00	0.00	0.00
Last Week <i>04-30-2009</i>	11.36	88.64	0.00	0.00	0.00	0.00
3 Months Ago <i>02-05-2009</i>	49.00	51.00	0.00	0.00	0.00	0.00
Start of Calendar Year <i>01-01-2009</i>	34.44	65.56	0.00	0.00	0.00	0.00
Start of Water Year <i>10-02-2008</i>	94.54	5.46	0.00	0.00	0.00	0.00
One Year Ago <i>05-08-2008</i>	24.57	75.43	0.00	0.00	0.00	0.00



Intensity:

- None
- D0 Abnormally Dry
- D1 Moderate Drought
- D2 Severe Drought
- D3 Extreme Drought
- D4 Exceptional Drought

The Drought Monitor focuses on broad-scale conditions. Local conditions may vary. For more information on the Drought Monitor, go to <https://droughtmonitor.unl.edu/About.aspx>

Author:

Laura Edwards
Western Regional Climate Center

