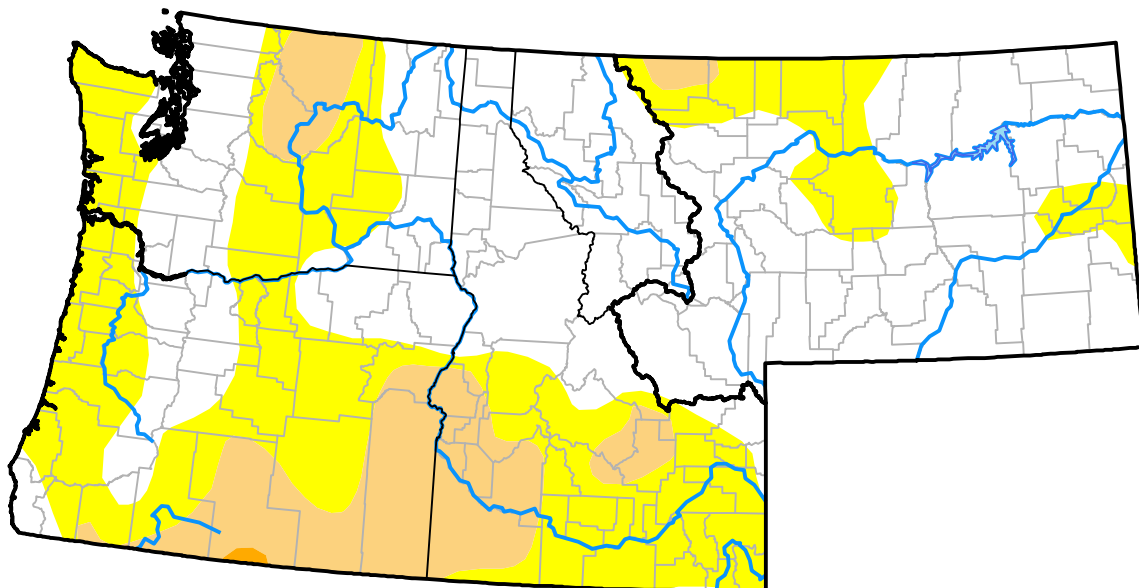


# Northwest RDEWS and Surrounding Areas

Drought Conditions (Percent Area)

	None	D0-D4	D1-D4	D2-D4	D3-D4	D4
<b>Current</b>	53.84	46.16	13.11	0.11	0.00	0.00
<b>Last Week</b> <i>04-30-2009</i>	44.13	55.87	15.37	0.82	0.00	0.00
<b>3 Months Ago</b> <i>02-05-2009</i>	55.80	44.20	17.30	1.19	0.00	0.00
<b>Start of Calendar Year</b> <i>01-01-2009</i>	42.25	57.75	18.16	1.19	0.00	0.00
<b>Start of Water Year</b> <i>10-02-2008</i>	42.67	57.33	15.29	2.47	0.39	0.00
<b>One Year Ago</b> <i>05-08-2008</i>	52.59	47.41	29.73	6.62	0.01	0.00



**Intensity:**



The Drought Monitor focuses on broad-scale conditions. Local conditions may vary. For more information on the Drought Monitor, go to <https://droughtmonitor.unl.edu/About.aspx>

**Author:**

Laura Edwards  
Western Regional Climate Center

