

U.S. Drought Monitor

Colorado Basin RFC

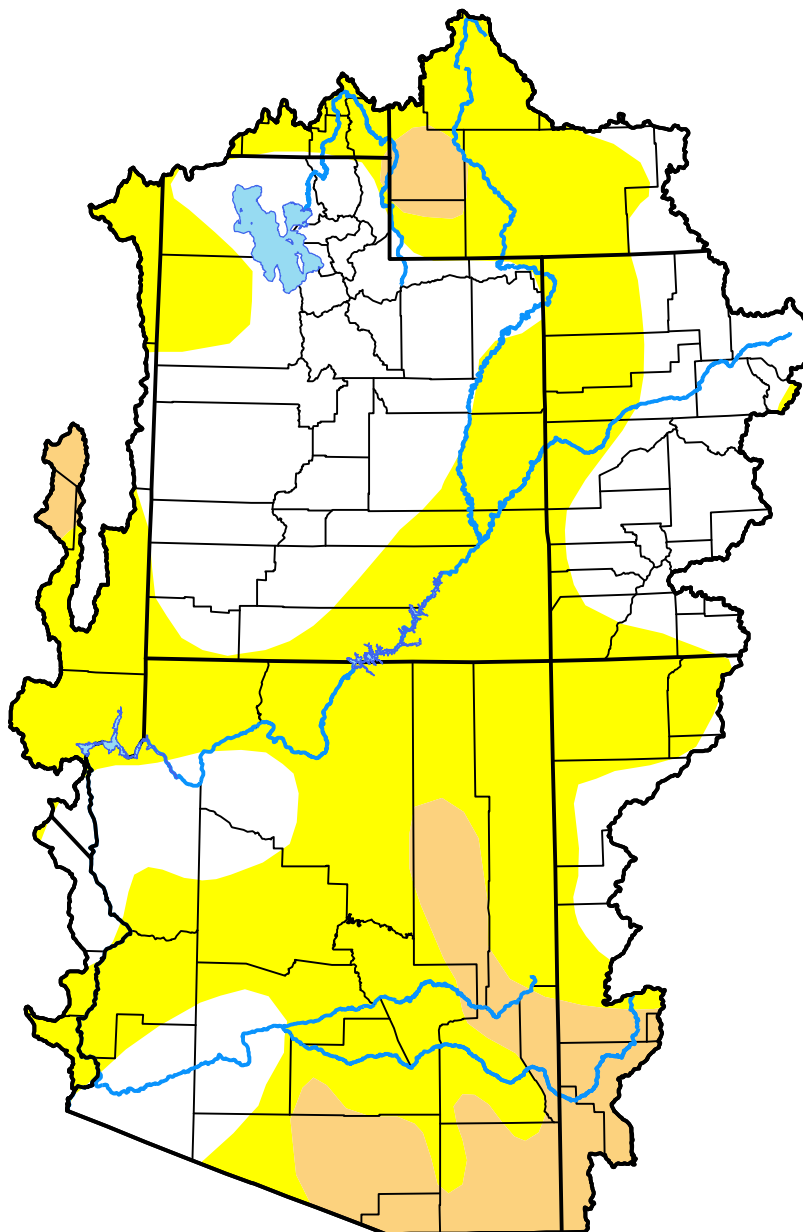
May 5, 2009

(Released Thursday, May. 7, 2009)

Valid 8 a.m. EDT

Drought Conditions (Percent Area)

	None	D0	D1	D2	D3	D4
Current	37.69	51.58	10.73	0.00	0.00	0.00
Last Week <i>04-30-2009</i>	33.07	57.18	9.76	0.00	0.00	0.00
3 Months Ago <i>02-05-2009</i>	51.40	32.30	14.96	1.34	0.00	0.00
Start of Calendar Year <i>01-01-2009</i>	47.85	35.80	15.00	1.34	0.00	0.00
Start of Water Year <i>10-02-2008</i>	64.78	19.24	15.59	0.39	0.00	0.00
One Year Ago <i>05-08-2008</i>	33.00	41.85	22.01	3.14	0.00	0.00



Intensity:

- None
- D0 Abnormally Dry
- D1 Moderate Drought
- D2 Severe Drought
- D3 Extreme Drought
- D4 Exceptional Drought

The Drought Monitor focuses on broad-scale conditions. Local conditions may vary. For more information on the Drought Monitor, go to <https://droughtmonitor.unl.edu/About.aspx>

Author:

Laura Edwards
Western Regional Climate Center

