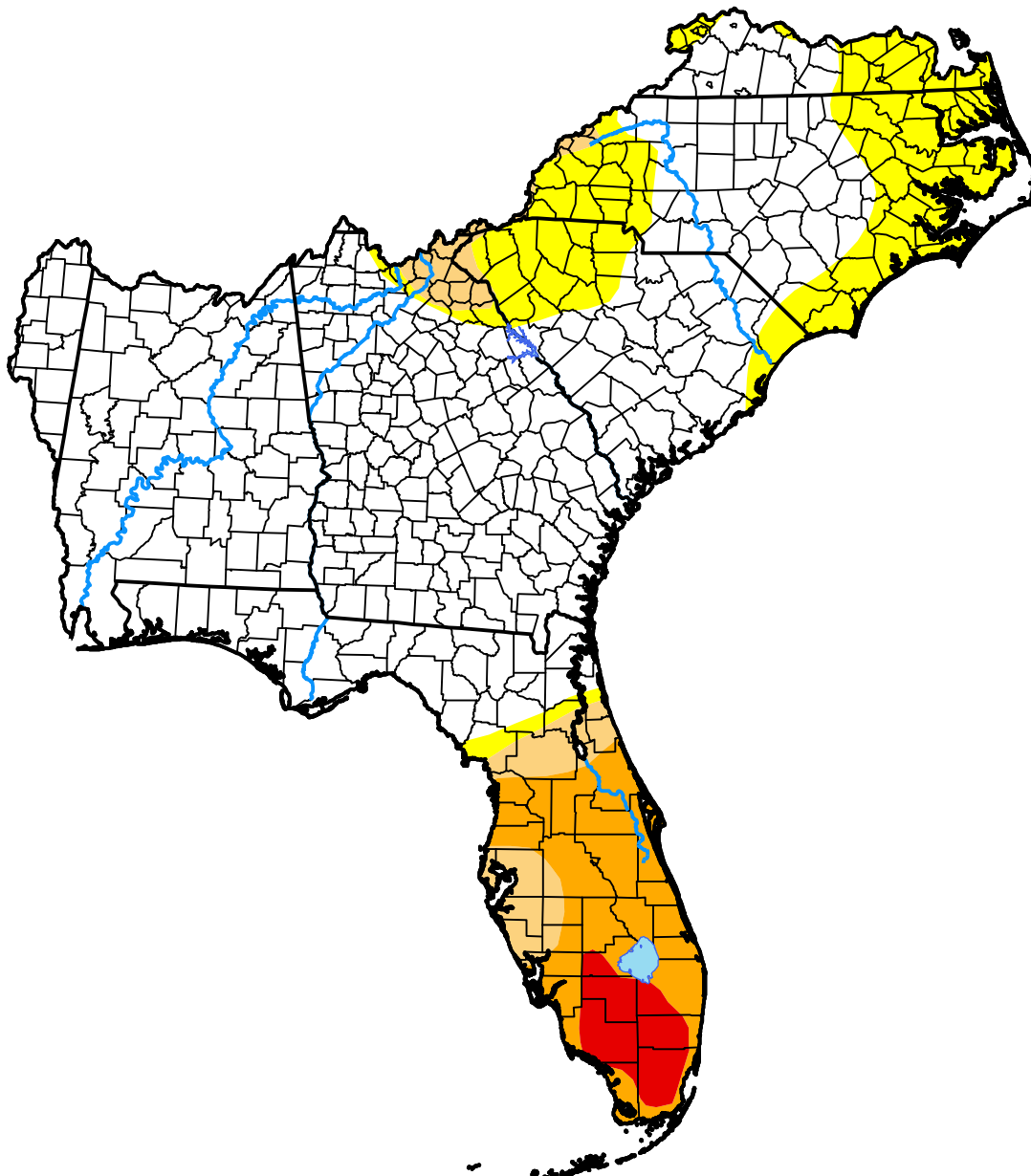


U.S. Drought Monitor Southeast RFC

May 5, 2009
(Released Thursday, May. 7, 2009)
Valid 8 a.m. EDT



Drought Conditions (Percent Area)

	None	D0-D4	D1-D4	D2-D4	D3-D4	D4
Current	70.06	29.94	14.98	10.70	2.56	0.00
Last Week <i>04-30-2009</i>	68.38	31.62	14.98	10.70	2.01	0.00
3 Months Ago <i>02-05-2009</i>	56.65	43.35	11.34	4.61	1.86	0.00
Start of Calendar Year <i>01-01-2009</i>	75.72	24.28	11.01	4.77	3.38	0.00
Start of Water Year <i>10-02-2008</i>	34.38	65.62	39.71	20.60	8.62	2.15
One Year Ago <i>05-08-2008</i>	27.90	72.10	42.18	23.35	9.87	0.00

Intensity:



The Drought Monitor focuses on broad-scale conditions. Local conditions may vary. For more information on the Drought Monitor, go to <https://droughtmonitor.unl.edu/About.aspx>

Author:

Laura Edwards
Western Regional Climate Center



droughtmonitor.unl.edu