

# U.S. Drought Monitor

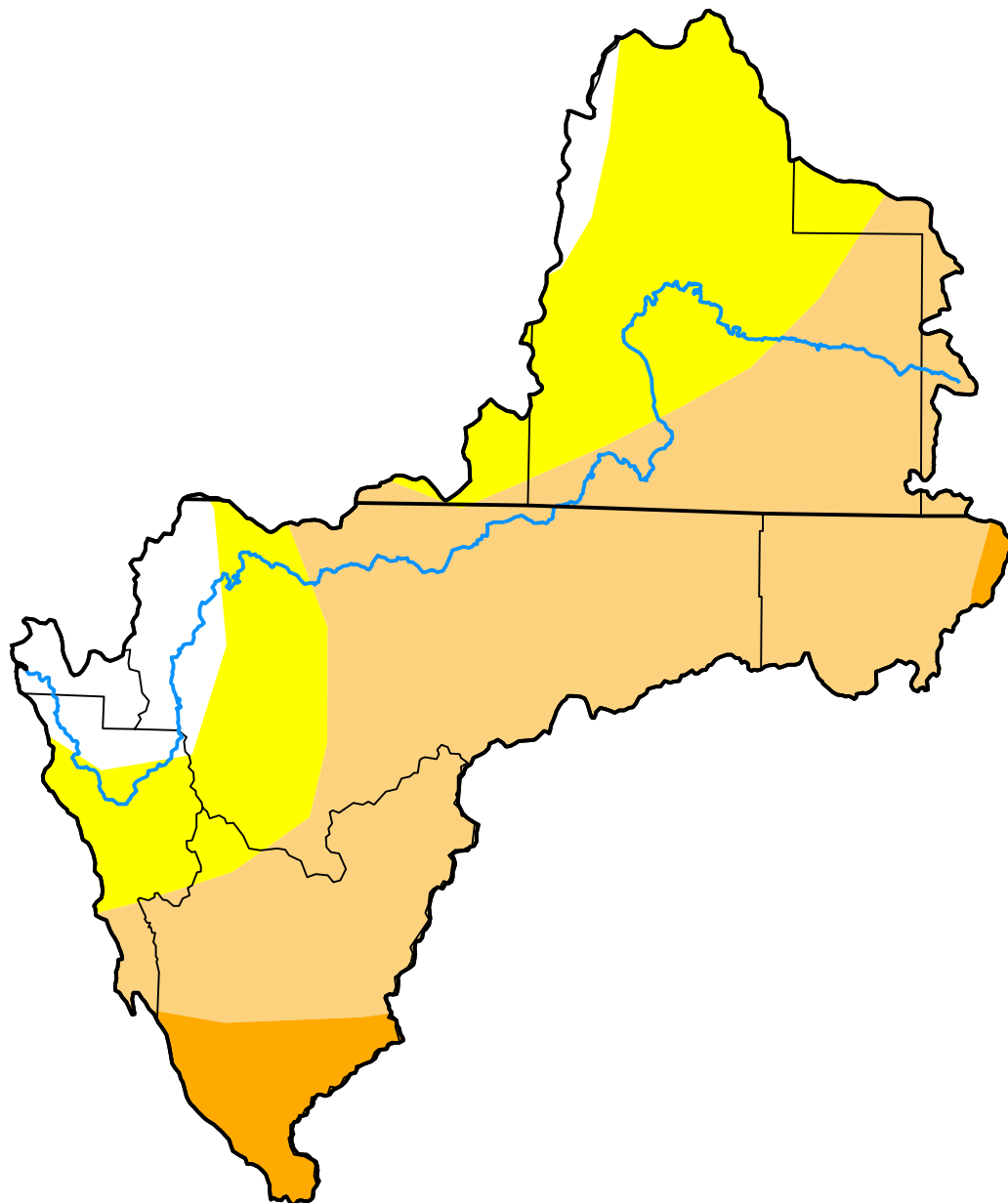
## Klamath River Basin

**May 19, 2009**  
 (Released Thursday, May. 21, 2009)

Valid 8 a.m. EDT

*Drought Conditions (Percent Area)*

	None	D0-D4	D1-D4	D2-D4	D3-D4	D4
<b>Current</b>	7.97	92.03	60.55	5.36	0.00	0.00
<b>Last Week</b> <i>05-12-2009</i>	7.64	92.36	60.55	5.36	0.00	0.00
<b>3 Months Ago</b> <i>02-17-2009</i>	7.46	92.54	58.44	7.25	0.37	0.00
<b>Start of Calendar Year</b> <i>12-30-2008</i>	8.39	91.61	63.03	7.41	0.00	0.00
<b>Start of Water Year</b> <i>09-30-2008</i>	0.00	100.00	55.48	23.69	0.00	0.00
<b>One Year Ago</b> <i>05-20-2008</i>	84.08	15.92	7.72	0.42	0.00	0.00



***Intensity:***

- None
- D0 Abnormally Dry
- D1 Moderate Drought
- D2 Severe Drought
- D3 Extreme Drought
- D4 Exceptional Drought

*The Drought Monitor focuses on broad-scale conditions. Local conditions may vary. For more information on the Drought Monitor, go to <https://droughtmonitor.unl.edu/About.aspx>*

***Author:***

Matthew Rosencrans  
 CPC/NCEP/NWS/NOAA

