

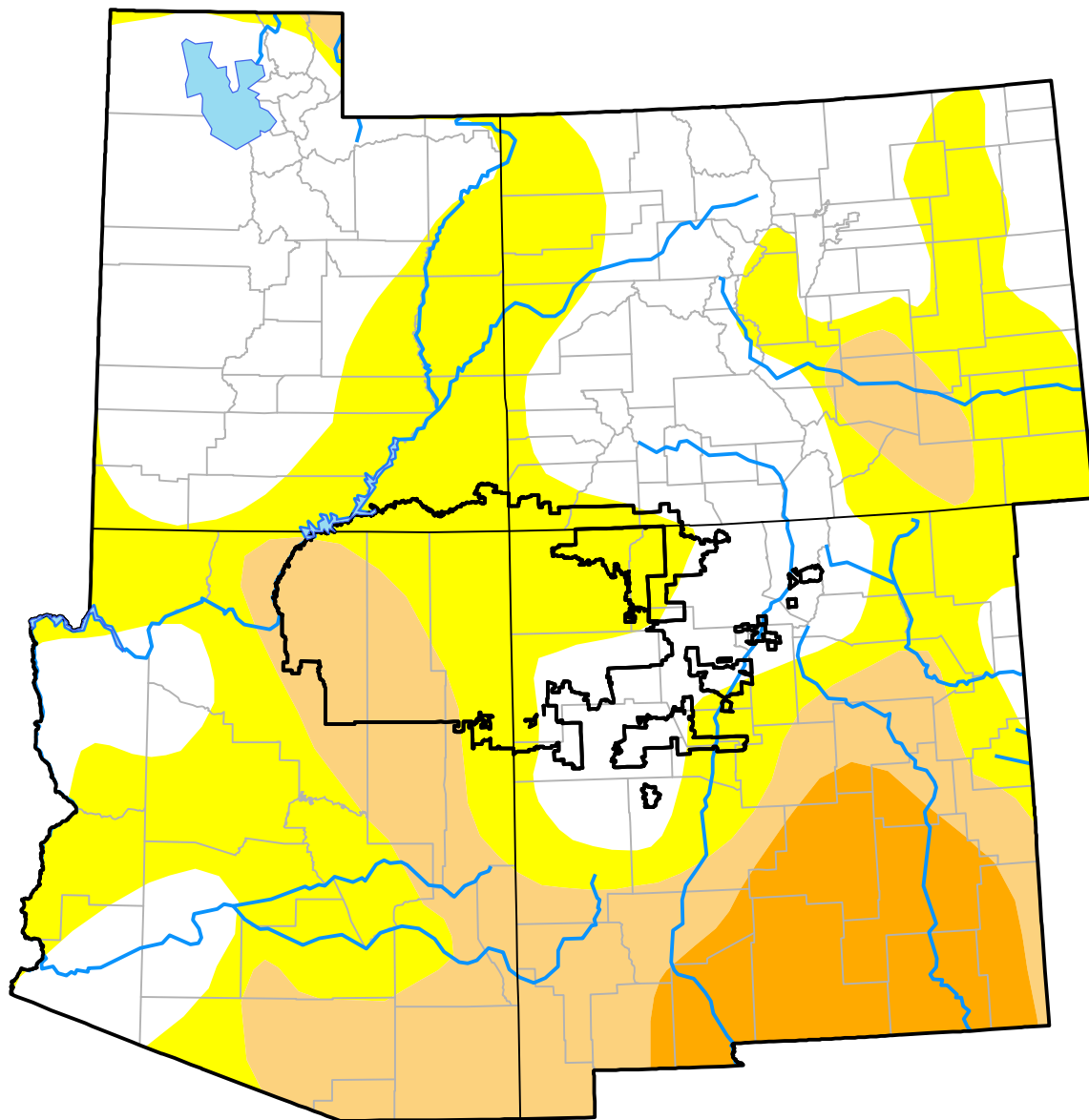
# Corners RDEWS and Surrounding Areas

(Released Thursday, May. 21, 2009)

Valid 8 a.m. EDT

Drought Conditions (Percent Area)

	None	D0-D4	D1-D4	D2-D4	D3-D4	D4
<b>Current</b>	38.34	61.66	25.44	7.57	0.00	0.00
<b>Last Week</b> <i>05-14-2009</i>	39.43	60.57	21.92	4.93	0.00	0.00
<b>3 Months Ago</b> <i>02-19-2009</i>	55.56	44.44	5.02	0.41	0.00	0.00
<b>Start of Calendar Year</b> <i>01-01-2009</i>	52.42	47.58	6.31	0.41	0.00	0.00
<b>Start of Water Year</b> <i>10-02-2008</i>	65.11	34.89	6.92	0.82	0.00	0.00
<b>One Year Ago</b> <i>05-22-2008</i>	35.61	64.39	25.89	3.58	0.55	0.00



**Intensity:**

- None
- D0 Abnormally Dry
- D1 Moderate Drought
- D2 Severe Drought
- D3 Extreme Drought
- D4 Exceptional Drought

The Drought Monitor focuses on broad-scale conditions. Local conditions may vary. For more information on the Drought Monitor, go to <https://droughtmonitor.unl.edu/About.aspx>

**Author:**

Matthew Rosencrans  
CPC/NCEP/NWS/NOAA

