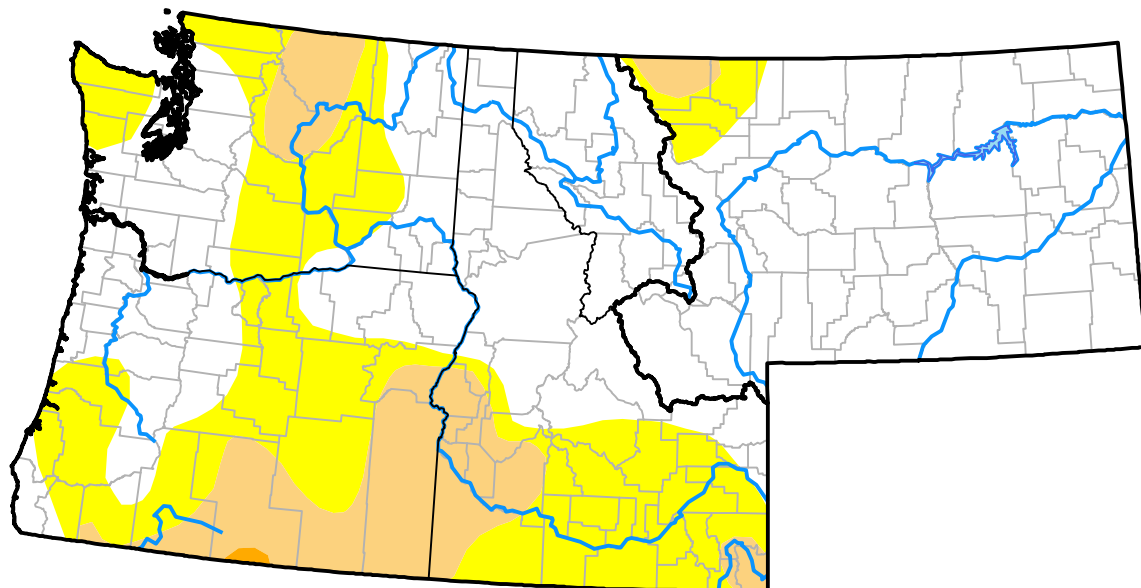


U.S. Drought Monitor

Pacific Northwest RDEWS

May 19, 2009
 (Released Thursday, May. 21, 2009)
 Valid 8 a.m. EDT



Drought Conditions (Percent Area)

	None	D0	D1	D2	D3	D4
Current	48.01	35.26	16.57	0.16	0.00	0.00
Last Week <i>05-14-2009</i>	48.03	34.26	17.54	0.16	0.00	0.00
3 Months Ago <i>02-19-2009</i>	34.65	41.38	22.25	1.73	0.00	0.00
Start of Calendar Year <i>01-01-2009</i>	34.99	40.76	22.53	1.73	0.00	0.00
Start of Water Year <i>10-02-2008</i>	37.34	44.75	16.42	1.50	0.00	0.00
One Year Ago <i>05-22-2008</i>	64.35	22.60	11.39	1.66	0.00	0.00

Intensity:

- None
- D0 Abnormally Dry
- D1 Moderate Drought
- D2 Severe Drought
- D3 Extreme Drought
- D4 Exceptional Drought

The Drought Monitor focuses on broad-scale conditions. Local conditions may vary. For more information on the Drought Monitor, go to <https://droughtmonitor.unl.edu/About.aspx>

Author:

Matthew Rosencrans
 CPC/NCEP/NWS/NOAA



droughtmonitor.unl.edu