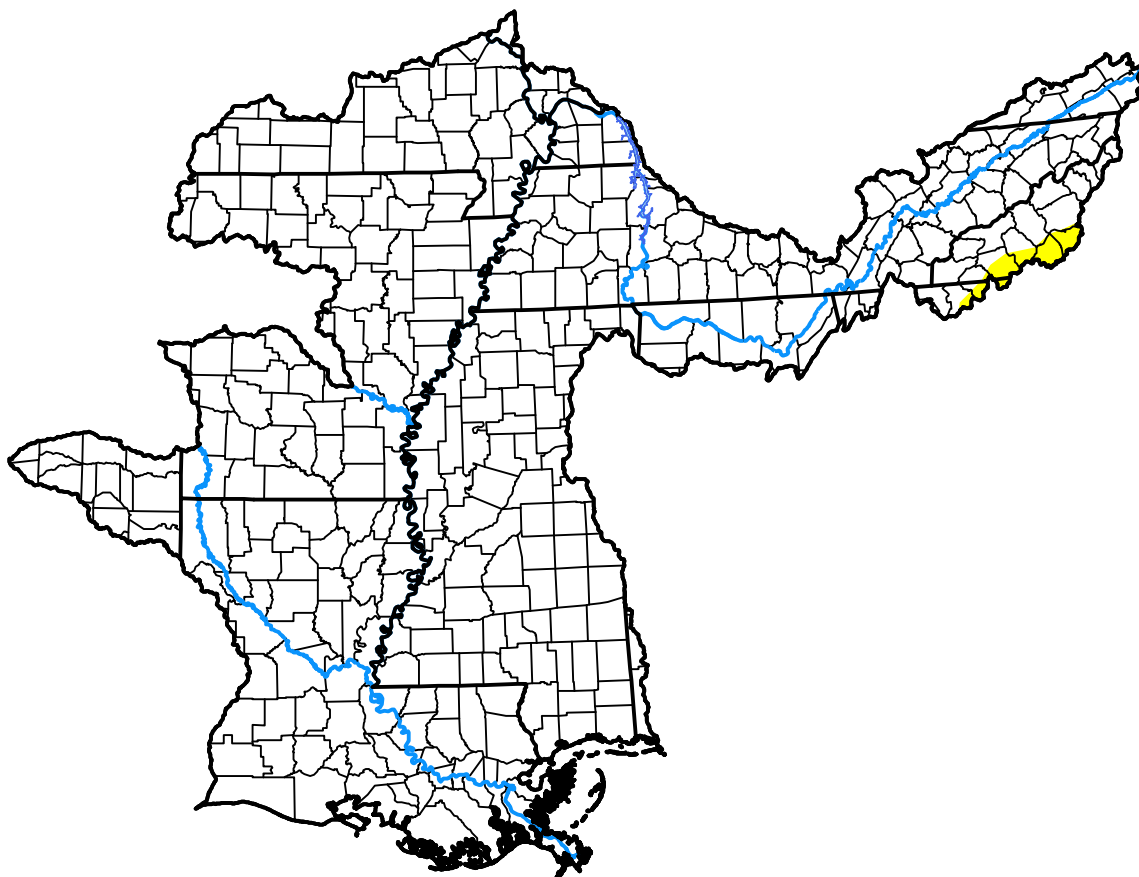


# U.S. Drought Monitor

## Lower Mississippi RFC

**May 19, 2009**  
 (Released Thursday, May. 21, 2009)  
 Valid 8 a.m. EDT



*Drought Conditions (Percent Area)*

	None	D0-D4	D1-D4	D2-D4	D3-D4	D4
<b>Current</b>	99.34	0.66	0.00	0.00	0.00	0.00
<b>Last Week</b> <i>05-14-2009</i>	97.82	2.18	0.00	0.00	0.00	0.00
<b>3 Months Ago</b> <i>02-19-2009</i>	71.35	28.65	12.95	1.69	0.00	0.00
<b>Start of Calendar Year</b> <i>01-01-2009</i>	80.24	19.76	10.55	1.70	0.16	0.00
<b>Start of Water Year</b> <i>10-02-2008</i>	76.79	23.21	19.37	11.14	5.49	0.00
<b>One Year Ago</b> <i>05-22-2008</i>	78.45	21.55	12.57	6.93	0.14	0.00

***Intensity:***



*The Drought Monitor focuses on broad-scale conditions. Local conditions may vary. For more information on the Drought Monitor, go to <https://droughtmonitor.unl.edu/About.aspx>*

***Author:***

Matthew Rosencrans  
 CPC/NCEP/NWS/NOAA

