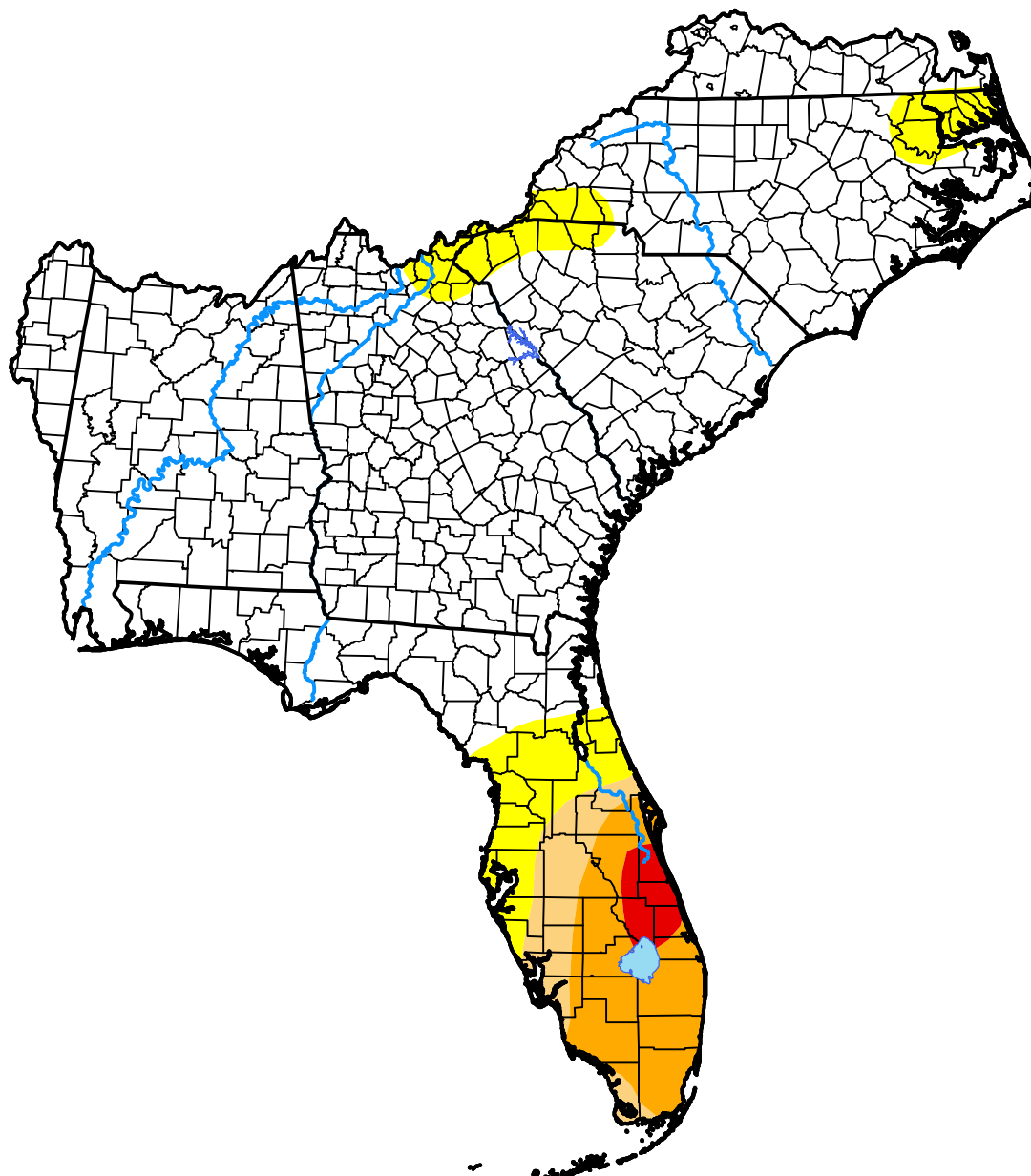


U.S. Drought Monitor Southeast RFC

May 19, 2009
(Released Thursday, May. 21, 2009)

Valid 8 a.m. EDT



Drought Conditions (Percent Area)

	None	D0-D4	D1-D4	D2-D4	D3-D4	D4
Current	82.22	17.78	9.97	7.15	1.14	0.00
Last Week <i>05-14-2009</i>	73.72	26.28	13.98	12.91	6.72	0.00
3 Months Ago <i>02-19-2009</i>	7.66	92.34	28.55	5.66	2.16	0.00
Start of Calendar Year <i>01-01-2009</i>	75.72	24.28	11.01	4.77	3.38	0.00
Start of Water Year <i>10-02-2008</i>	34.38	65.62	39.71	20.60	8.62	2.15
One Year Ago <i>05-22-2008</i>	20.74	79.26	39.28	22.80	5.45	0.00

Intensity:

- None
- D0 Abnormally Dry
- D1 Moderate Drought
- D2 Severe Drought
- D3 Extreme Drought
- D4 Exceptional Drought

The Drought Monitor focuses on broad-scale conditions. Local conditions may vary. For more information on the Drought Monitor, go to <https://droughtmonitor.unl.edu/About.aspx>

Author:

Matthew Rosencrans
CPC/NCEP/NWS/NOAA

