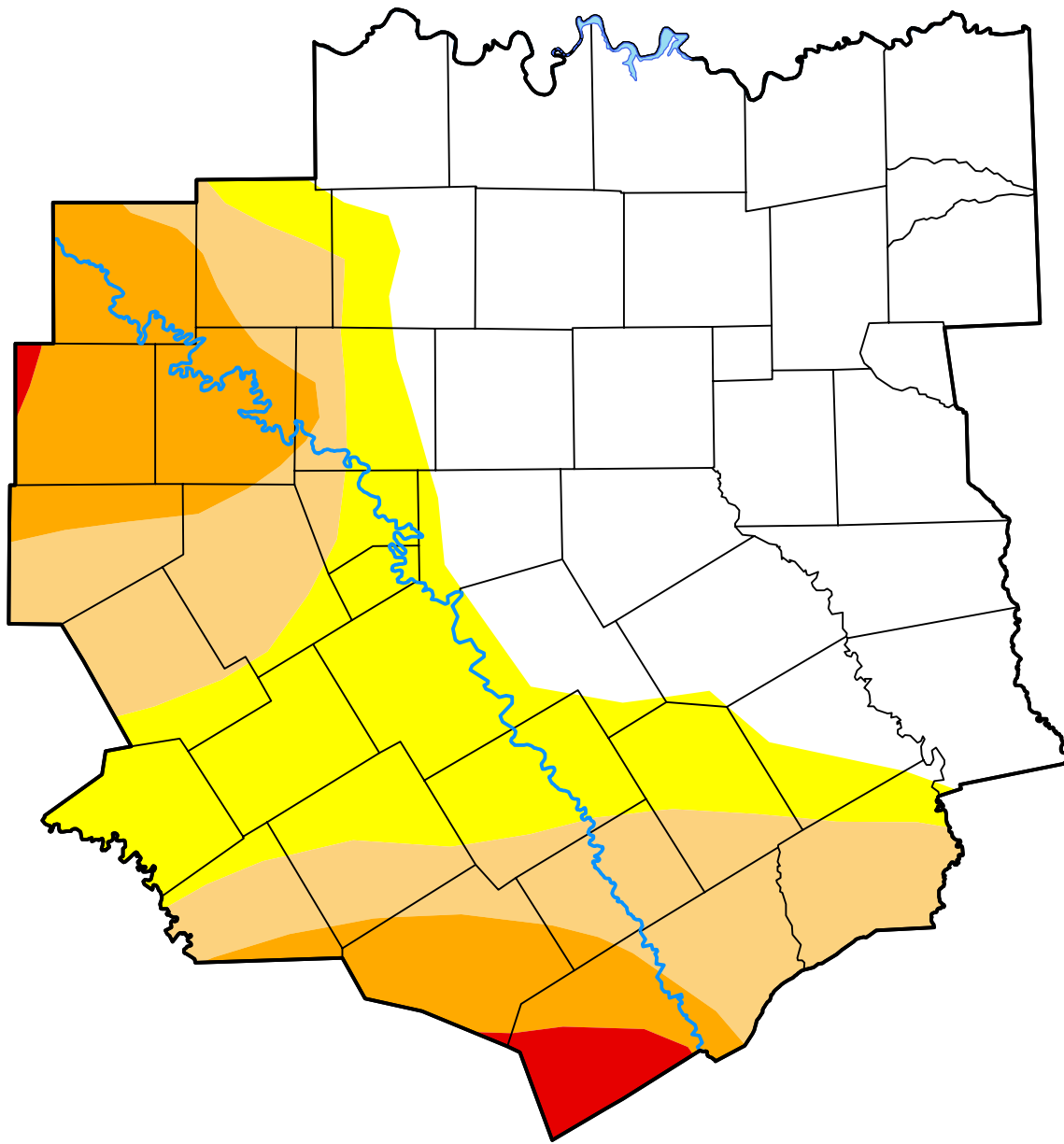


# U.S. Drought Monitor

## Fort Worth/Dallas, TX WFO

**May 19, 2009**  
 (Released Thursday, May. 21, 2009)  
 Valid 8 a.m. EDT



*Drought Conditions (Percent Area)*

	None	D0-D4	D1-D4	D2-D4	D3-D4	D4
<b>Current</b>	48.27	51.73	32.30	13.79	1.53	0.00
<b>Last Week</b> <i>05-14-2009</i>	49.93	50.07	29.34	15.04	4.04	0.00
<b>3 Months Ago</b> <i>02-19-2009</i>	3.51	96.49	85.51	34.93	4.16	0.27
<b>Start of Calendar Year</b> <i>01-01-2009</i>	11.97	88.03	18.79	4.93	1.46	0.00
<b>Start of Water Year</b> <i>10-02-2008</i>	78.92	21.08	6.51	2.54	0.41	0.00
<b>One Year Ago</b> <i>05-22-2008</i>	100.00	0.00	0.00	0.00	0.00	0.00

***Intensity:***

- None
- D0 Abnormally Dry
- D1 Moderate Drought
- D2 Severe Drought
- D3 Extreme Drought
- D4 Exceptional Drought

*The Drought Monitor focuses on broad-scale conditions. Local conditions may vary. For more information on the Drought Monitor, go to <https://droughtmonitor.unl.edu/About.aspx>*

***Author:***

Matthew Rosencrans  
 CPC/NCEP/NWS/NOAA

