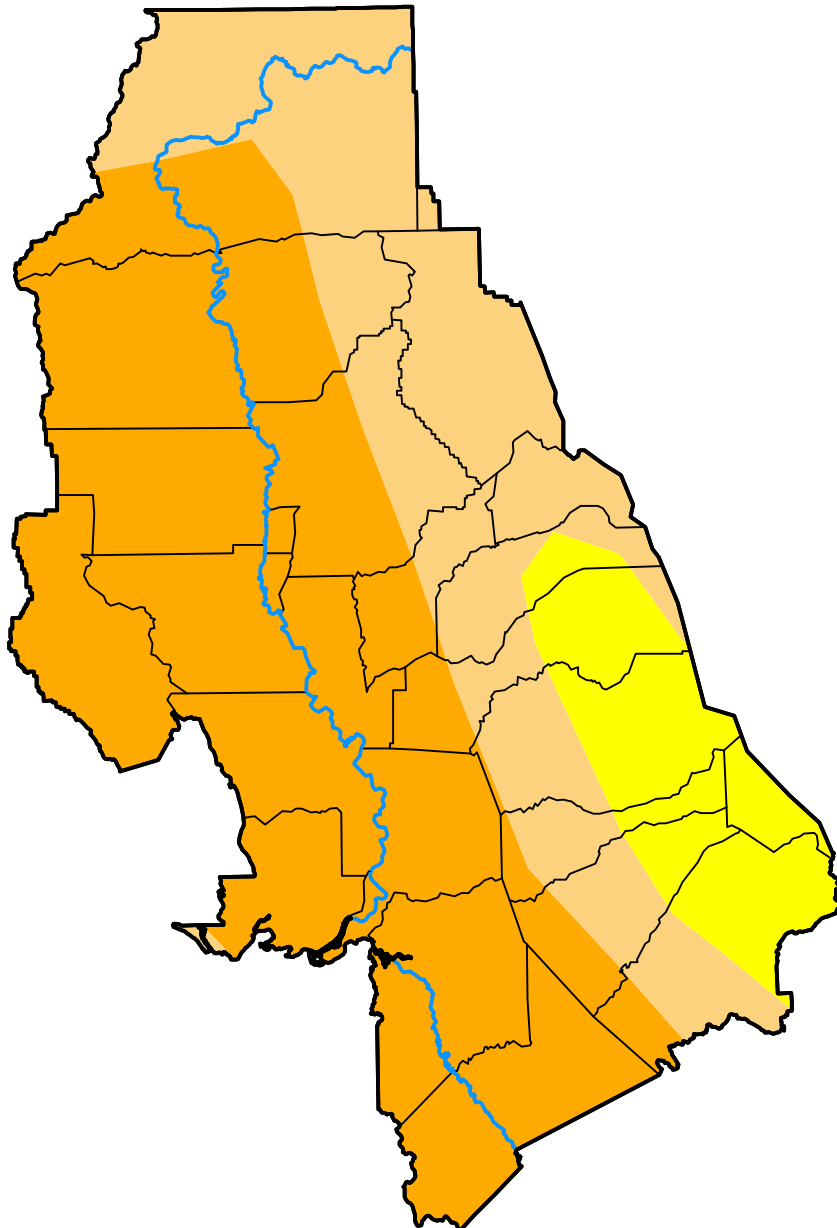


U.S. Drought Monitor Sacramento, CA WFO

May 19, 2009
(Released Thursday, May. 21, 2009)
Valid 8 a.m. EDT



Drought Conditions (Percent Area)

	None	D0-D4	D1-D4	D2-D4	D3-D4	D4
Current	0.00	100.00	88.33	56.82	0.00	0.00
Last Week <i>05-14-2009</i>	0.00	100.00	88.33	56.82	0.00	0.00
3 Months Ago <i>02-19-2009</i>	0.00	100.00	100.00	91.57	57.79	0.00
Start of Calendar Year <i>01-01-2009</i>	0.00	100.00	100.00	91.46	0.38	0.00
Start of Water Year <i>10-02-2008</i>	0.00	100.00	100.00	86.45	11.40	0.00
One Year Ago <i>05-22-2008</i>	1.47	98.53	25.56	0.00	0.00	0.00

Intensity:

- None
- D0 Abnormally Dry
- D1 Moderate Drought
- D2 Severe Drought
- D3 Extreme Drought
- D4 Exceptional Drought

The Drought Monitor focuses on broad-scale conditions. Local conditions may vary. For more information on the Drought Monitor, go to <https://droughtmonitor.unl.edu/About.aspx>

Author:

Matthew Rosencrans
CPC/NCEP/NWS/NOAA

