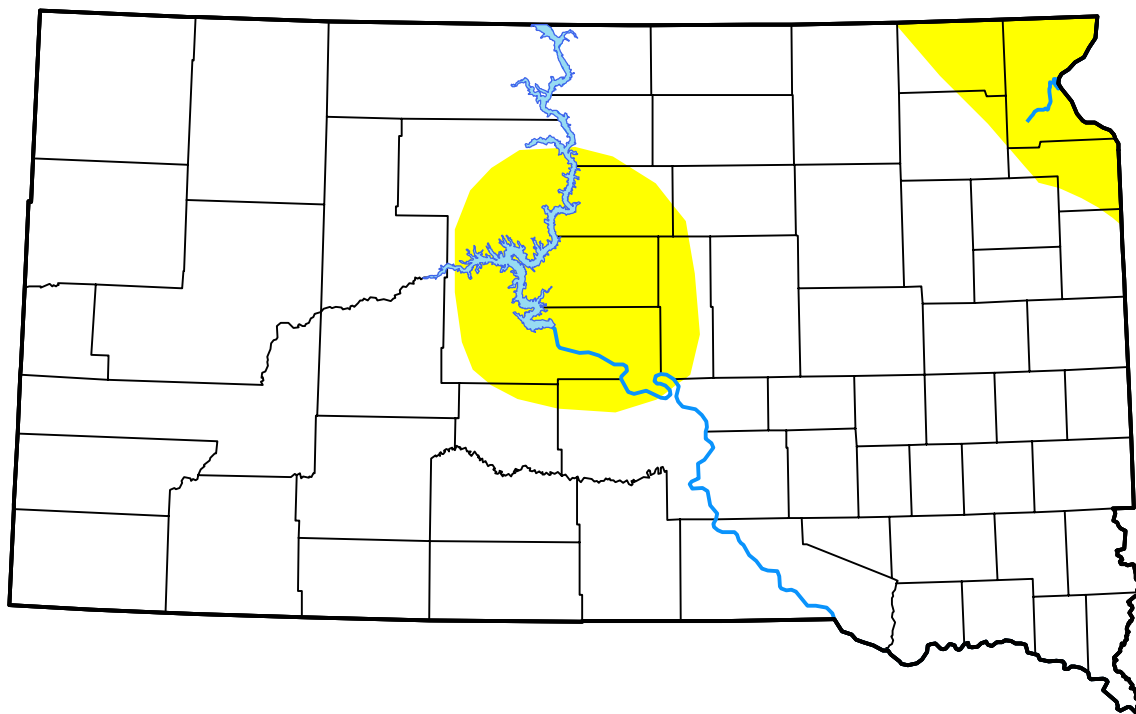


# U.S. Drought Monitor South Dakota

**August 4, 2009**  
(Released Thursday, Aug. 6, 2009)  
Valid 8 a.m. EDT

## Drought Conditions (Percent Area)

	None	D0-D4	D1-D4	D2-D4	D3-D4	D4
<b>Current</b>	88.55	11.45	0.00	0.00	0.00	0.00
<b>Last Week</b> <i>07-30-2009</i>	95.73	4.27	0.00	0.00	0.00	0.00
<b>3 Months Ago</b> <i>05-07-2009</i>	100.00	0.00	0.00	0.00	0.00	0.00
<b>Start of Calendar Year</b> <i>01-01-2009</i>	99.50	0.50	0.00	0.00	0.00	0.00
<b>Start of Water Year</b> <i>10-02-2008</i>	73.92	26.08	6.97	0.00	0.00	0.00
<b>One Year Ago</b> <i>08-07-2008</i>	77.50	22.50	1.56	0.00	0.00	0.00



### Intensity:

None	D2 Severe Drought
D0 Abnormally Dry	D3 Extreme Drought
D1 Moderate Drought	D4 Exceptional Drought

The Drought Monitor focuses on broad-scale conditions. Local conditions may vary. For more information on the Drought Monitor, go to <https://droughtmonitor.unl.edu/About.aspx>

### Author:

Mark Svoboda  
National Drought Mitigation Center



[droughtmonitor.unl.edu](https://droughtmonitor.unl.edu)