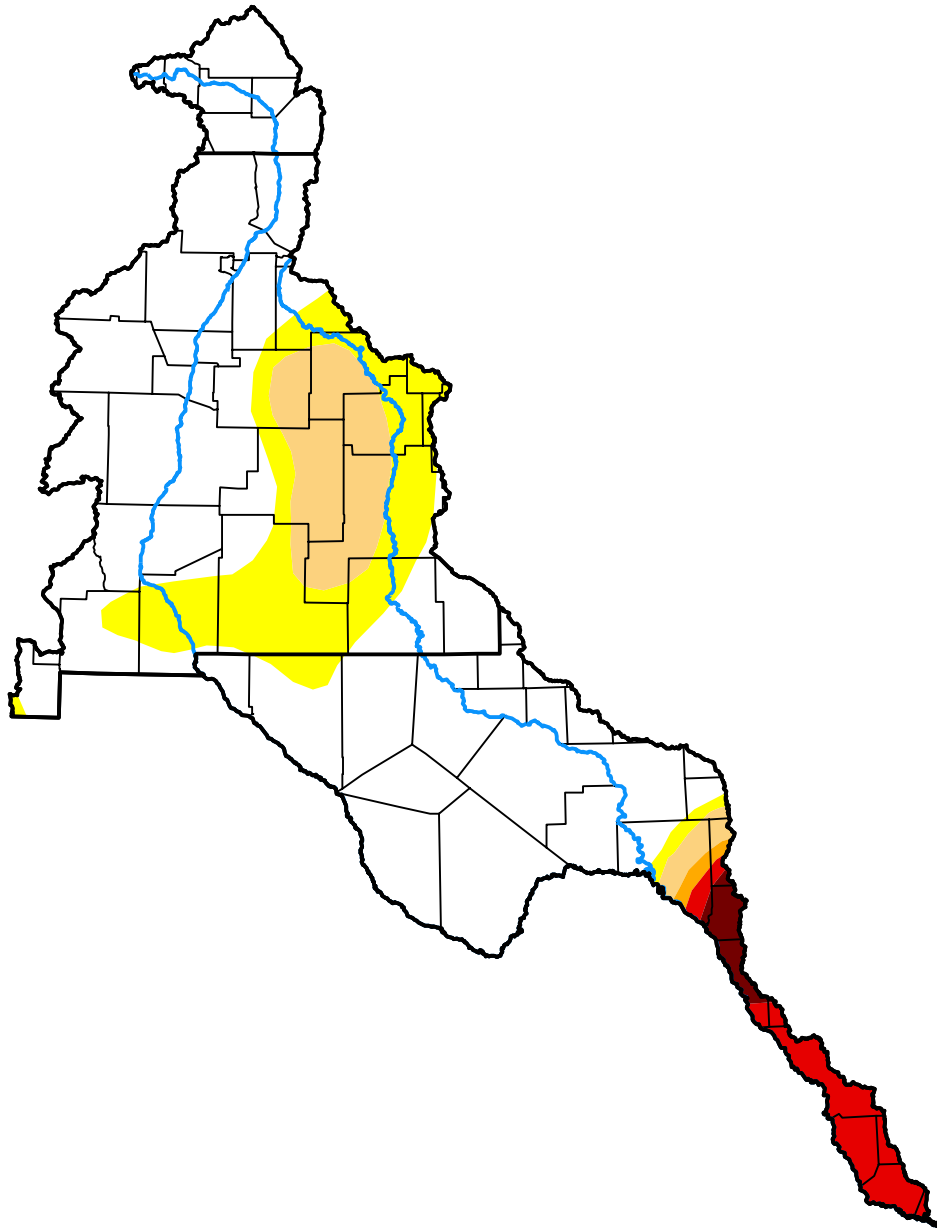


U.S. Drought Monitor

Rio Grande Watershed

August 4, 2009
 (Released Thursday, Aug. 6, 2009)
 Valid 8 a.m. EDT



Drought Conditions (Percent Area)

	None	D0	D1	D2	D3	D4
Current	70.88	15.01	8.82	0.37	3.76	1.16
Last Week <i>07-30-2009</i>	70.27	14.86	9.57	1.24	2.50	1.56
3 Months Ago <i>05-07-2009</i>	18.99	32.33	19.22	26.51	2.76	0.19
Start of Calendar Year <i>01-01-2009</i>	71.45	23.81	3.37	1.37	0.00	0.00
Start of Water Year <i>10-02-2008</i>	77.02	20.26	2.25	0.47	0.00	0.00
One Year Ago <i>08-07-2008</i>	44.61	40.25	8.49	3.84	2.80	0.00

Intensity:

- None
- D0 Abnormally Dry
- D1 Moderate Drought
- D2 Severe Drought
- D3 Extreme Drought
- D4 Exceptional Drought

The Drought Monitor focuses on broad-scale conditions. Local conditions may vary. For more information on the Drought Monitor, go to <https://droughtmonitor.unl.edu/About.aspx>

Author:

Mark Svoboda
 National Drought Mitigation Center

