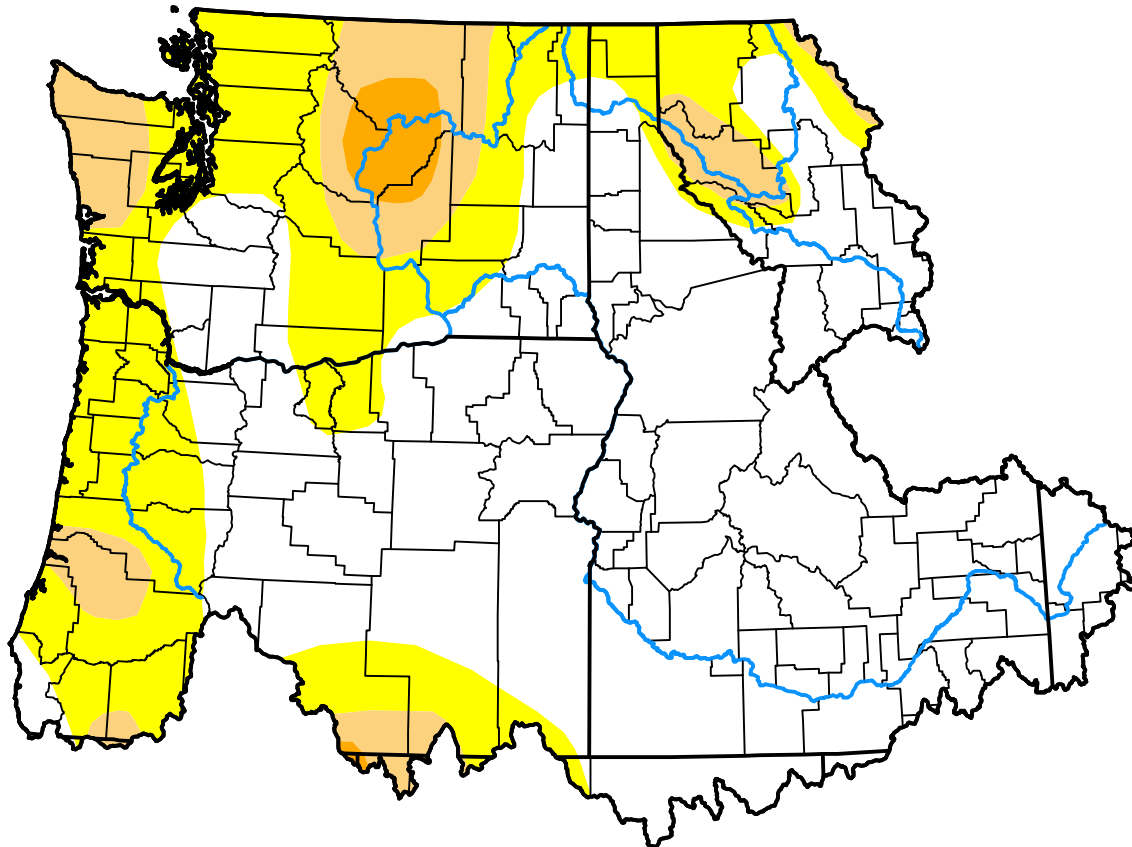


U.S. Drought Monitor Northwest RFC

August 4, 2009
(Released Thursday, Aug. 6, 2009)
Valid 8 a.m. EDT

Drought Conditions (Percent Area)

	None	D0-D4	D1-D4	D2-D4	D3-D4	D4
Current	63.51	36.49	10.79	1.71	0.00	0.00
Last Week <i>07-30-2009</i>	60.73	39.27	9.74	0.52	0.00	0.00
3 Months Ago <i>05-07-2009</i>	42.95	57.05	17.29	0.15	0.00	0.00
Start of Calendar Year <i>01-01-2009</i>	34.88	65.12	23.22	1.78	0.00	0.00
Start of Water Year <i>10-02-2008</i>	37.13	62.87	17.52	1.62	0.00	0.00
One Year Ago <i>08-07-2008</i>	29.95	70.05	19.01	1.49	0.00	0.00



Intensity:

- None
- D0 Abnormally Dry
- D1 Moderate Drought
- D2 Severe Drought
- D3 Extreme Drought
- D4 Exceptional Drought

The Drought Monitor focuses on broad-scale conditions. Local conditions may vary. For more information on the Drought Monitor, go to <https://droughtmonitor.unl.edu/About.aspx>

Author:

Mark Svoboda
National Drought Mitigation Center



droughtmonitor.unl.edu