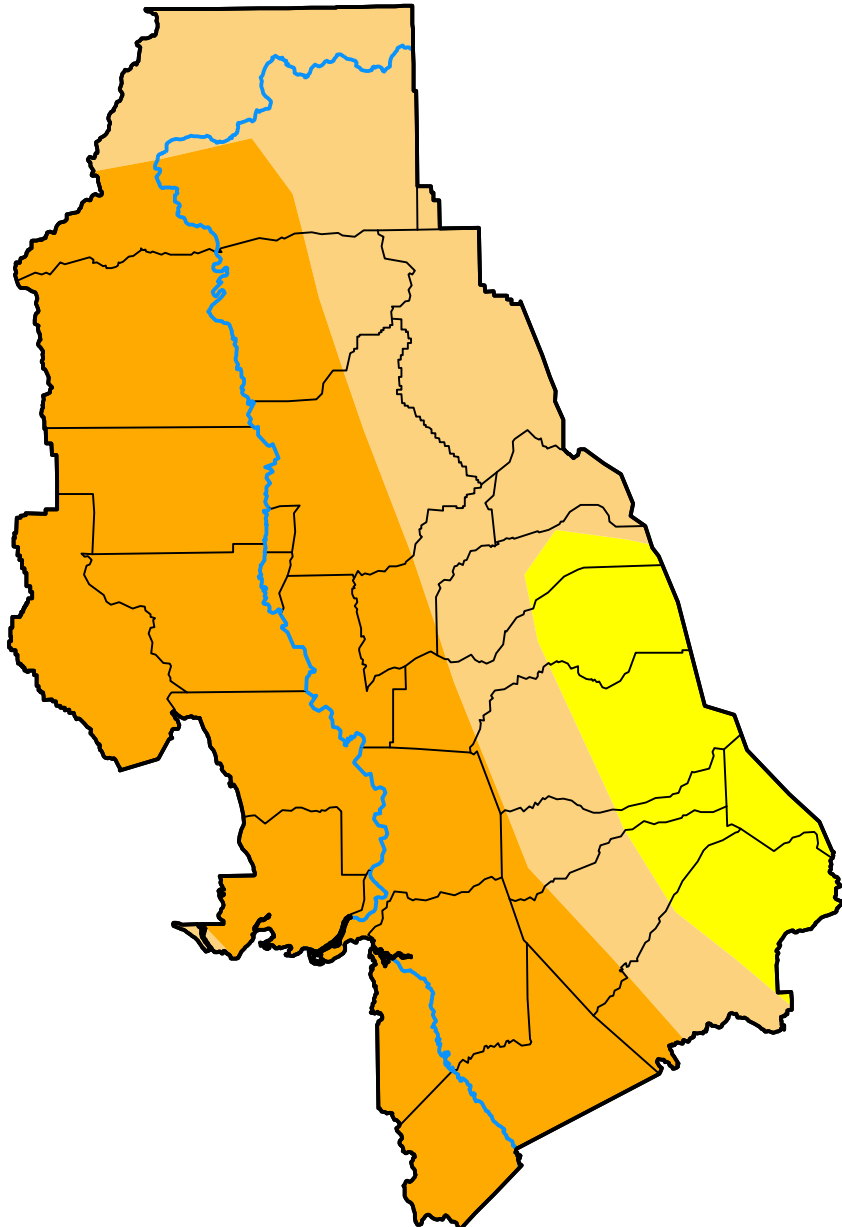


U.S. Drought Monitor Sacramento, CA WFO

August 4, 2009
(Released Thursday, Aug. 6, 2009)
Valid 8 a.m. EDT



Drought Conditions (Percent Area)

	None	D0	D1	D2	D3	D4
Current	0.00	11.89	31.29	56.82	0.00	0.00
Last Week <i>07-30-2009</i>	0.00	11.89	31.29	56.82	0.00	0.00
3 Months Ago <i>05-07-2009</i>	0.00	11.67	31.51	56.82	0.00	0.00
Start of Calendar Year <i>01-01-2009</i>	0.00	0.00	8.54	91.08	0.38	0.00
Start of Water Year <i>10-02-2008</i>	0.00	0.00	13.55	75.05	11.40	0.00
One Year Ago <i>08-07-2008</i>	0.00	2.31	21.78	75.91	0.00	0.00

Intensity:

- None
- D0 Abnormally Dry
- D1 Moderate Drought
- D2 Severe Drought
- D3 Extreme Drought
- D4 Exceptional Drought

The Drought Monitor focuses on broad-scale conditions. Local conditions may vary. For more information on the Drought Monitor, go to <https://droughtmonitor.unl.edu/About.aspx>

Author:

Mark Svoboda
National Drought Mitigation Center

