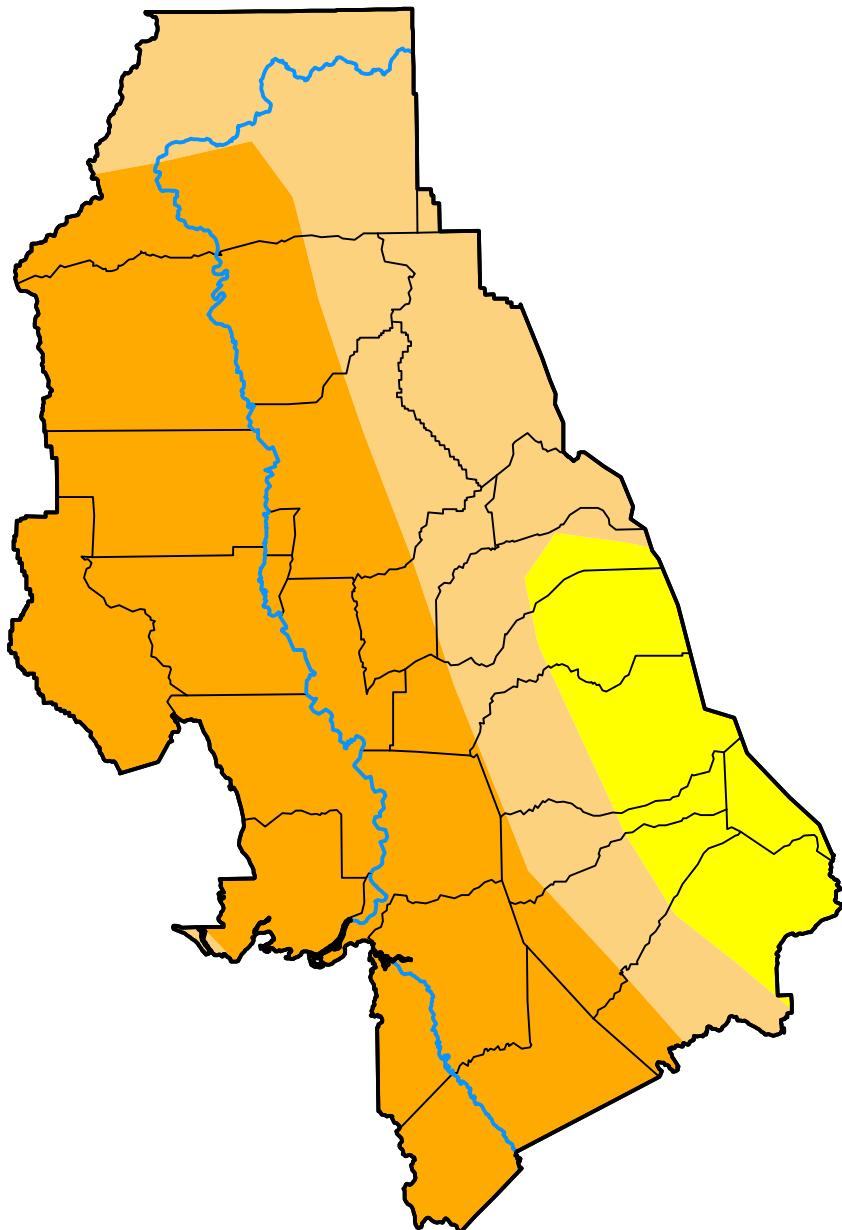


U.S. Drought Monitor Sacramento, CA WFO

August 4, 2009
(Released Thursday, Aug. 6, 2009)
Valid 8 a.m. EDT



Drought Conditions (Percent Area)

	None	D0-D4	D1-D4	D2-D4	D3-D4	D4
Current	0.00	100.00	88.11	56.82	0.00	0.00
Last Week <i>07-30-2009</i>	0.00	100.00	88.11	56.82	0.00	0.00
3 Months Ago <i>05-07-2009</i>	0.00	100.00	88.33	56.82	0.00	0.00
Start of Calendar Year <i>01-01-2009</i>	0.00	100.00	100.00	91.46	0.38	0.00
Start of Water Year <i>10-02-2008</i>	0.00	100.00	100.00	86.45	11.40	0.00
One Year Ago <i>08-07-2008</i>	0.00	100.00	97.69	75.91	0.00	0.00

Intensity:



The Drought Monitor focuses on broad-scale conditions. Local conditions may vary. For more information on the Drought Monitor, go to <https://droughtmonitor.unl.edu/About.aspx>

Author:

Mark Svoboda
National Drought Mitigation Center



droughtmonitor.unl.edu