

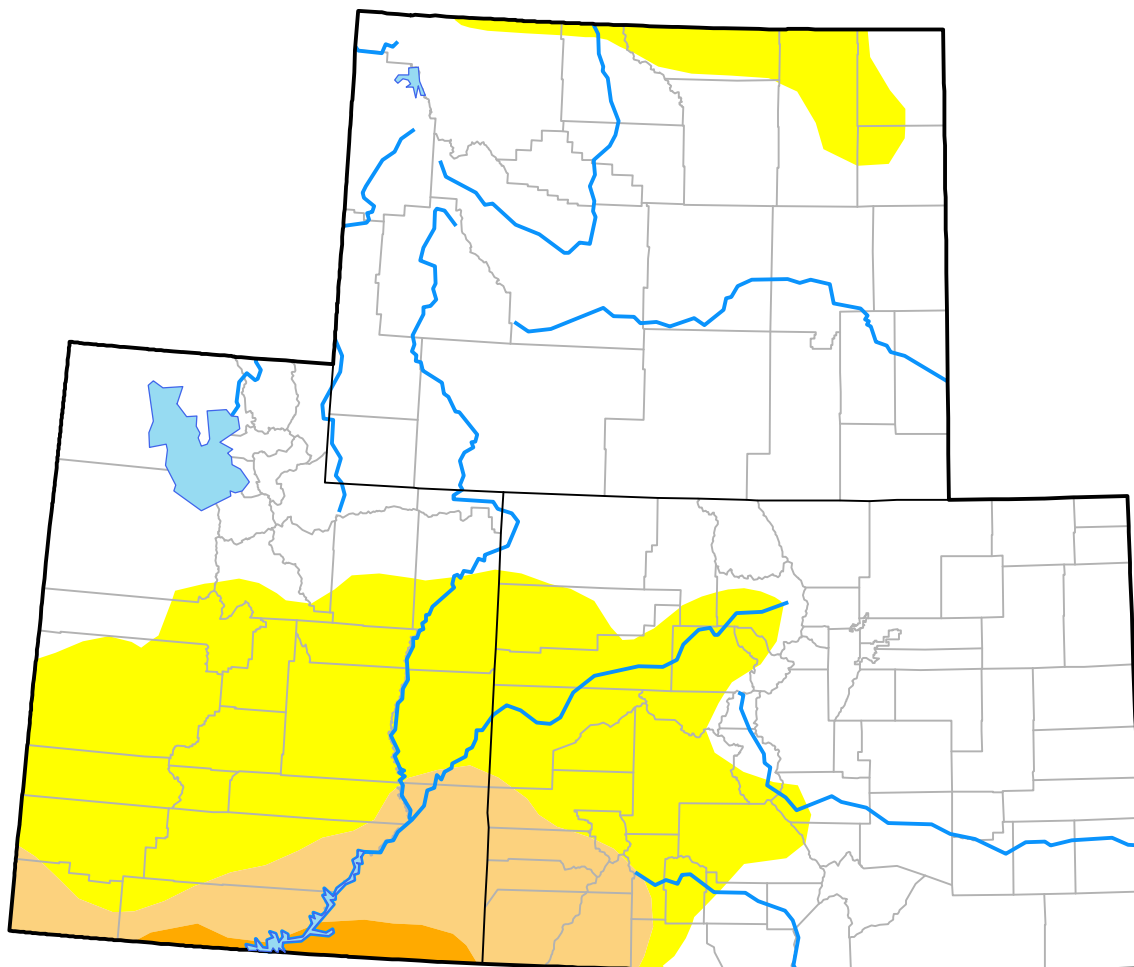
Upper Colorado River Basin RDEWS

(Released Thursday, Dec. 24, 2009)

Valid 7 a.m. EST

Drought Conditions (Percent Area)

	None	D0-D4	D1-D4	D2-D4	D3-D4	D4
Current	67.02	32.98	8.30	0.94	0.00	0.00
Last Week <i>12-17-2009</i>	67.02	32.98	8.30	0.94	0.00	0.00
3 Months Ago <i>09-24-2009</i>	79.61	20.39	0.76	0.00	0.00	0.00
Start of Calendar Year <i>01-01-2009</i>	33.58	66.42	14.41	0.61	0.00	0.00
Start of Water Year <i>10-01-2009</i>	79.61	20.39	2.32	0.00	0.00	0.00
One Year Ago <i>12-24-2008</i>	25.17	74.83	15.84	0.61	0.00	0.00



Intensity:

- None
- D0 Abnormally Dry
- D1 Moderate Drought
- D2 Severe Drought
- D3 Extreme Drought
- D4 Exceptional Drought

The Drought Monitor focuses on broad-scale conditions. Local conditions may vary. For more information on the Drought Monitor, go to <https://droughtmonitor.unl.edu/About.aspx>

Author:

Richard Heim
NCEI/NOAA

