

U.S. Drought Monitor

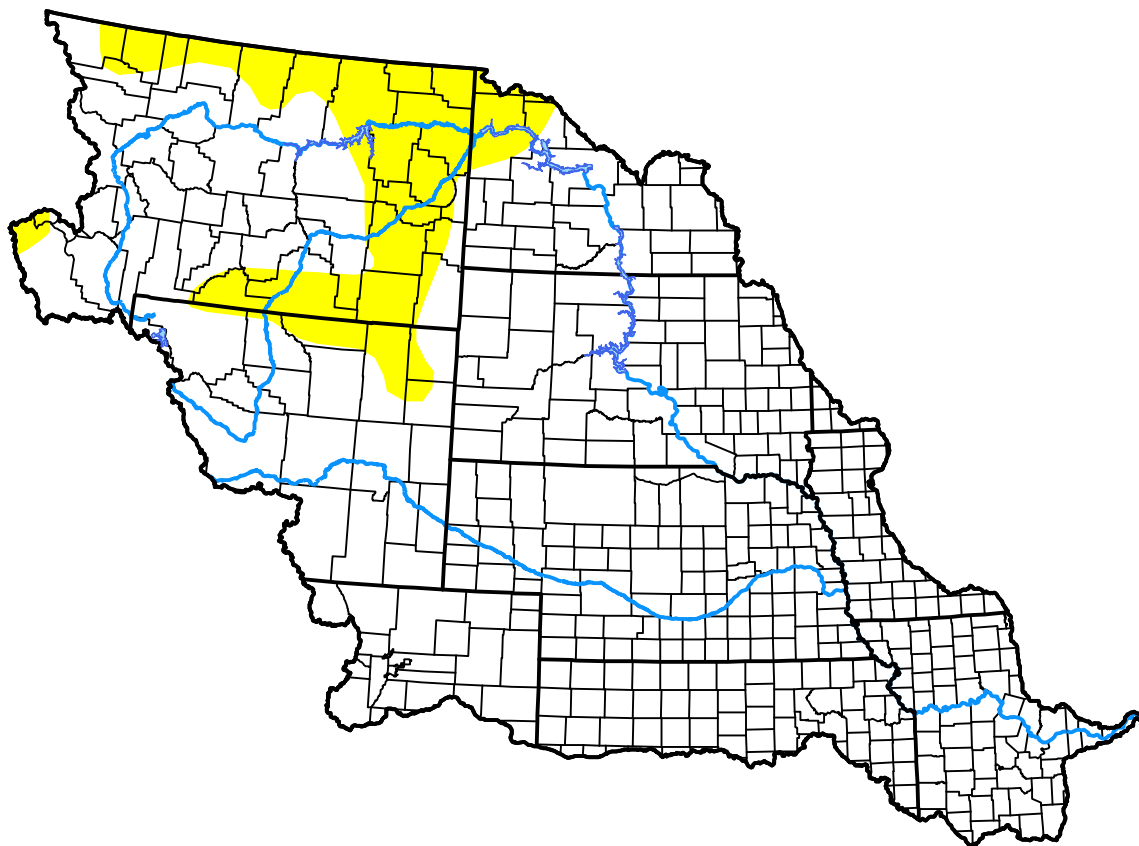
Missouri Basin RFC

December 22, 2009
 (Released Thursday, Dec. 24, 2009)

Valid 7 a.m. EST

Drought Conditions (Percent Area)

	None	D0-D4	D1-D4	D2-D4	D3-D4	D4
Current	87.98	12.02	0.00	0.00	0.00	0.00
Last Week <i>12-17-2009</i>	87.98	12.02	0.00	0.00	0.00	0.00
3 Months Ago <i>09-24-2009</i>	93.81	6.19	0.84	0.00	0.00	0.00
Start of Calendar Year <i>01-01-2009</i>	72.14	27.86	3.55	0.00	0.00	0.00
Start of Water Year <i>10-01-2009</i>	84.78	15.22	0.84	0.00	0.00	0.00
One Year Ago <i>12-24-2008</i>	72.14	27.86	4.84	0.00	0.00	0.00



Intensity:

- None
- D0 Abnormally Dry
- D1 Moderate Drought
- D2 Severe Drought
- D3 Extreme Drought
- D4 Exceptional Drought

The Drought Monitor focuses on broad-scale conditions. Local conditions may vary. For more information on the Drought Monitor, go to <https://droughtmonitor.unl.edu/About.aspx>

Author:

Richard Heim
 NCEI/NOAA



droughtmonitor.unl.edu