

# U.S. Drought Monitor

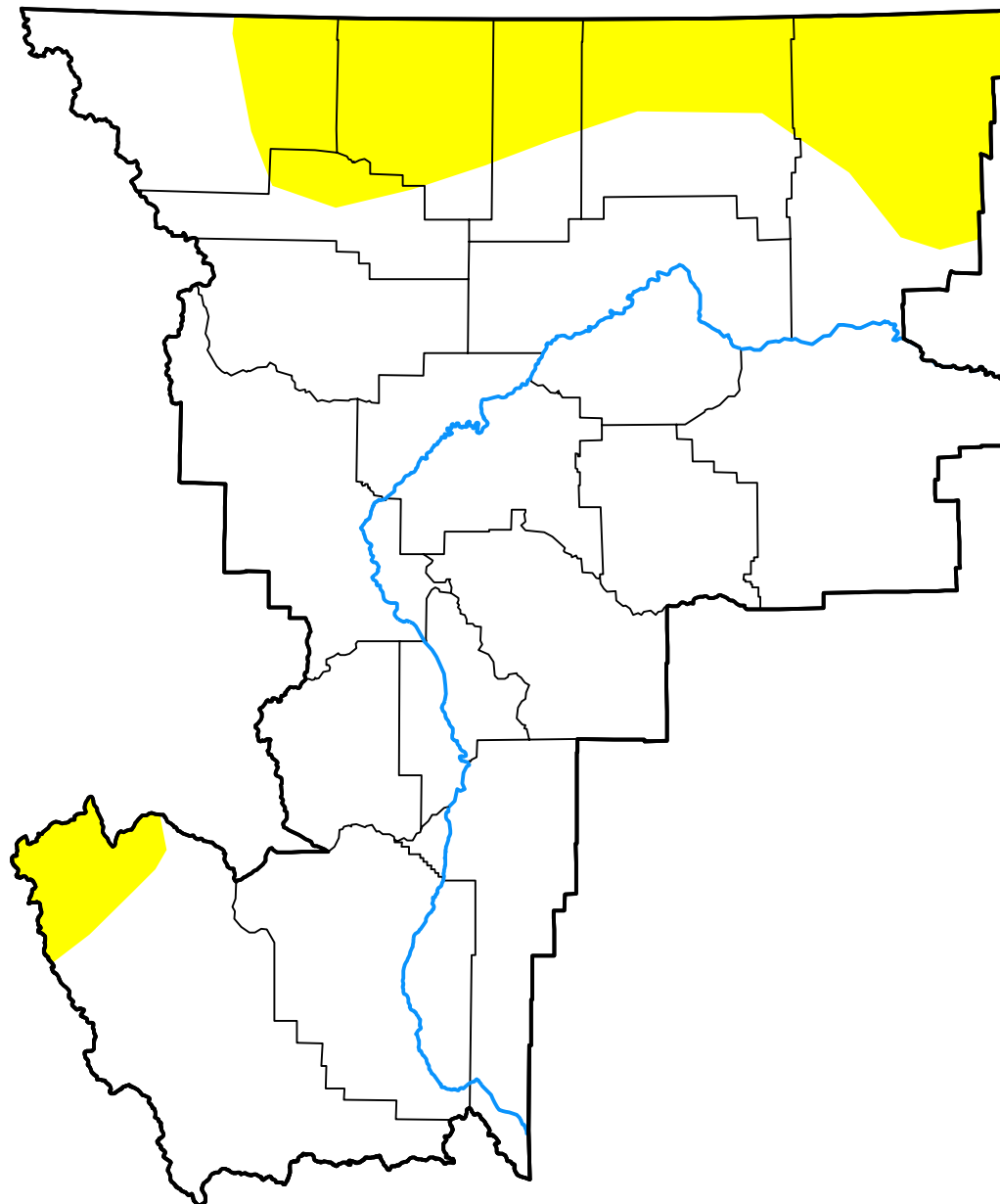
## Great Falls, MT WFO

**December 22, 2009**  
 (Released Thursday, Dec. 24, 2009)

Valid 7 a.m. EST

Drought Conditions (Percent Area)

	None	D0-D4	D1-D4	D2-D4	D3-D4	D4
<b>Current</b>	82.19	17.81	0.00	0.00	0.00	0.00
<b>Last Week</b> <i>12-17-2009</i>	82.19	17.81	0.00	0.00	0.00	0.00
<b>3 Months Ago</b> <i>09-24-2009</i>	87.15	12.85	8.38	0.00	0.00	0.00
<b>Start of Calendar Year</b> <i>01-01-2009</i>	42.56	57.44	9.41	0.00	0.00	0.00
<b>Start of Water Year</b> <i>10-01-2009</i>	9.28	90.72	8.38	0.00	0.00	0.00
<b>One Year Ago</b> <i>12-24-2008</i>	42.56	57.44	22.06	0.00	0.00	0.00



**Intensity:**

- None
- D0 Abnormally Dry
- D1 Moderate Drought
- D2 Severe Drought
- D3 Extreme Drought
- D4 Exceptional Drought

The Drought Monitor focuses on broad-scale conditions. Local conditions may vary. For more information on the Drought Monitor, go to <https://droughtmonitor.unl.edu/About.aspx>

**Author:**

Richard Heim  
 NCEI/NOAA

