

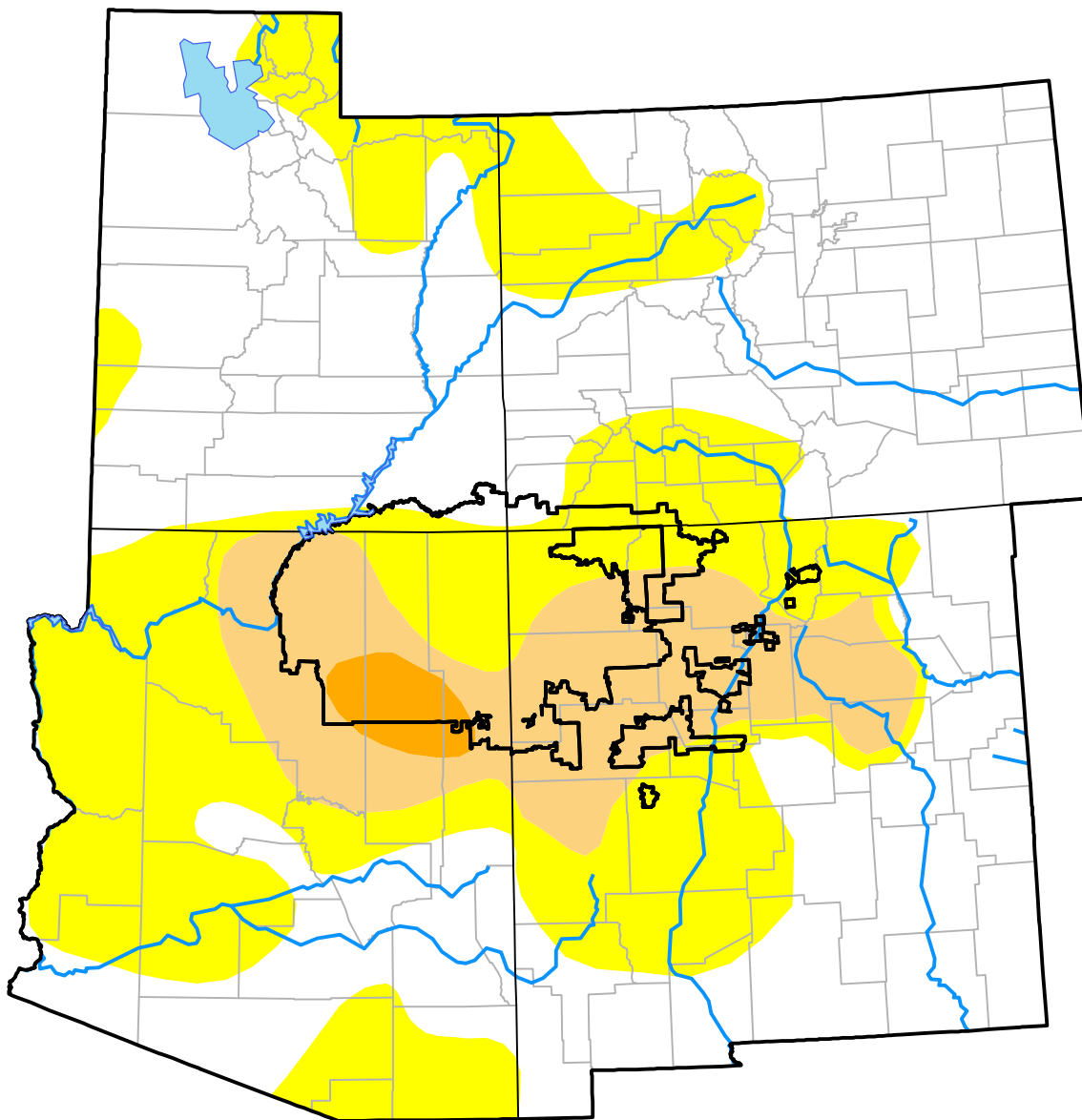
Four Corners RDEWS and Surrounding Areas

(Released Thursday, Jul. 22, 2010)

Valid 8 a.m. EDT

Drought Conditions (Percent Area)

	None	D0	D1	D2	D3	D4
Current	55.80	31.54	11.52	1.13	0.00	0.00
Last Week <i>07-15-2010</i>	62.09	28.65	8.12	1.13	0.00	0.00
3 Months Ago <i>04-22-2010</i>	62.96	31.81	4.51	0.72	0.00	0.00
Start of Calendar Year <i>12-31-2009</i>	40.20	25.19	14.22	19.04	1.36	0.00
Start of Water Year <i>10-01-2009</i>	52.92	30.20	16.88	0.00	0.00	0.00
One Year Ago <i>07-23-2009</i>	70.45	23.63	4.82	1.10	0.00	0.00



Intensity:

- None
- D0 Abnormally Dry
- D1 Moderate Drought
- D2 Severe Drought
- D3 Extreme Drought
- D4 Exceptional Drought

The Drought Monitor focuses on broad-scale conditions. Local conditions may vary. For more information on the Drought Monitor, go to <https://droughtmonitor.unl.edu/About.aspx>

Author:

Anthony Artusa
NOAA/NWS/NCEP/CPC

