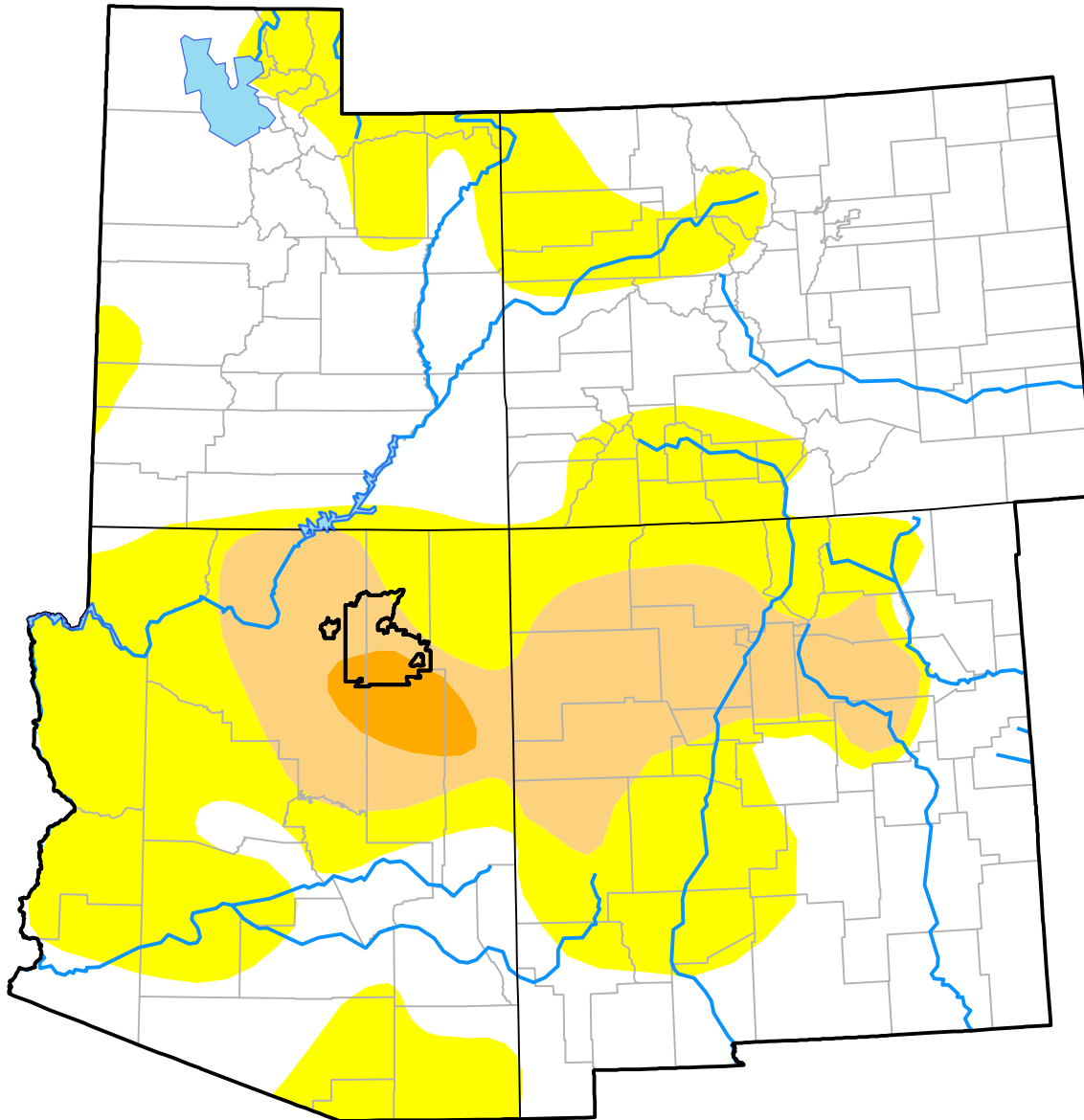


# U.S. Drought Monitor Hopi RDEWS

**July 20, 2010**  
(Released Thursday, Jul. 22, 2010)  
Valid 8 a.m. EDT

*Drought Conditions (Percent Area)*

	None	D0-D4	D1-D4	D2-D4	D3-D4	D4
<b>Current</b>	0.00	100.00	98.00	36.29	0.00	0.00
<b>Last Week</b> <i>07-15-2010</i>	0.00	100.00	98.27	36.29	0.00	0.00
<b>3 Months Ago</b> <i>04-22-2010</i>	0.00	100.00	98.27	24.29	0.00	0.00
<b>Start of Calendar Year</b> <i>12-31-2009</i>	0.00	100.00	100.00	100.00	28.23	0.00
<b>Start of Water Year</b> <i>10-01-2009</i>	0.00	100.00	100.00	0.00	0.00	0.00
<b>One Year Ago</b> <i>07-23-2009</i>	0.00	100.00	0.00	0.00	0.00	0.00



***Intensity:***

- None
- D0 Abnormally Dry
- D1 Moderate Drought
- D2 Severe Drought
- D3 Extreme Drought
- D4 Exceptional Drought

*The Drought Monitor focuses on broad-scale conditions. Local conditions may vary. For more information on the Drought Monitor, go to <https://droughtmonitor.unl.edu/About.aspx>*

***Author:***

Anthony Artusa  
NOAA/NWS/NCEP/CPC

