

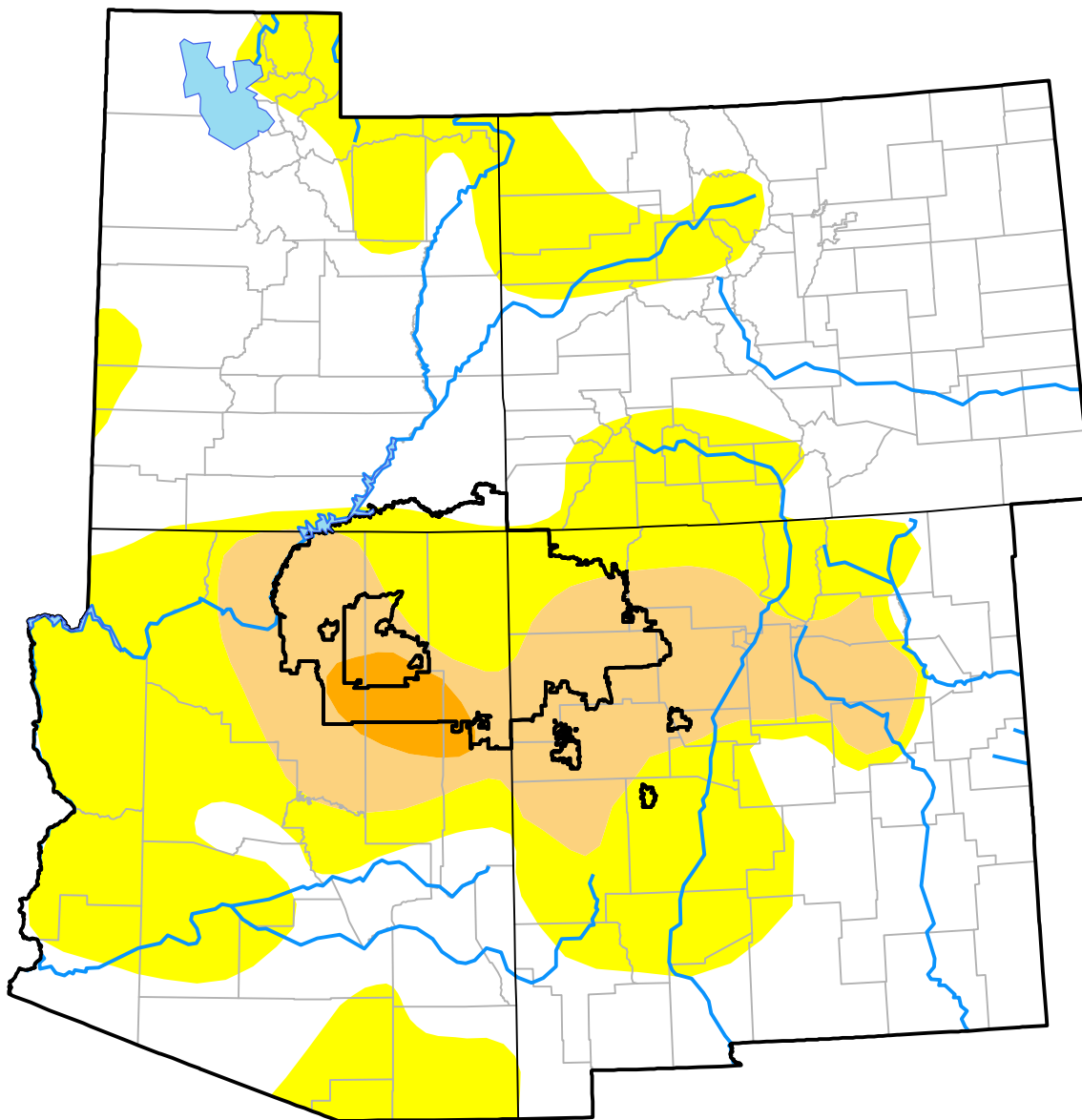
Nebraska RDEWS and Surrounding Areas

(Released Thursday, Jul. 22, 2010)

Valid 8 a.m. EDT

Drought Conditions (Percent Area)

	None	D0-D4	D1-D4	D2-D4	D3-D4	D4
Current	55.80	44.20	12.65	1.13	0.00	0.00
Last Week <i>07-15-2010</i>	62.09	37.91	9.25	1.13	0.00	0.00
3 Months Ago <i>04-22-2010</i>	62.96	37.04	5.23	0.72	0.00	0.00
Start of Calendar Year <i>12-31-2009</i>	40.20	59.80	34.62	20.40	1.36	0.00
Start of Water Year <i>10-01-2009</i>	52.92	47.08	16.88	0.00	0.00	0.00
One Year Ago <i>07-23-2009</i>	70.45	29.55	5.92	1.10	0.00	0.00



Intensity:

- None
- D0 Abnormally Dry
- D1 Moderate Drought
- D2 Severe Drought
- D3 Extreme Drought
- D4 Exceptional Drought

The Drought Monitor focuses on broad-scale conditions. Local conditions may vary. For more information on the Drought Monitor, go to <https://droughtmonitor.unl.edu/About.aspx>

Author:

Anthony Artusa
NOAA/NWS/NCEP/CPC

