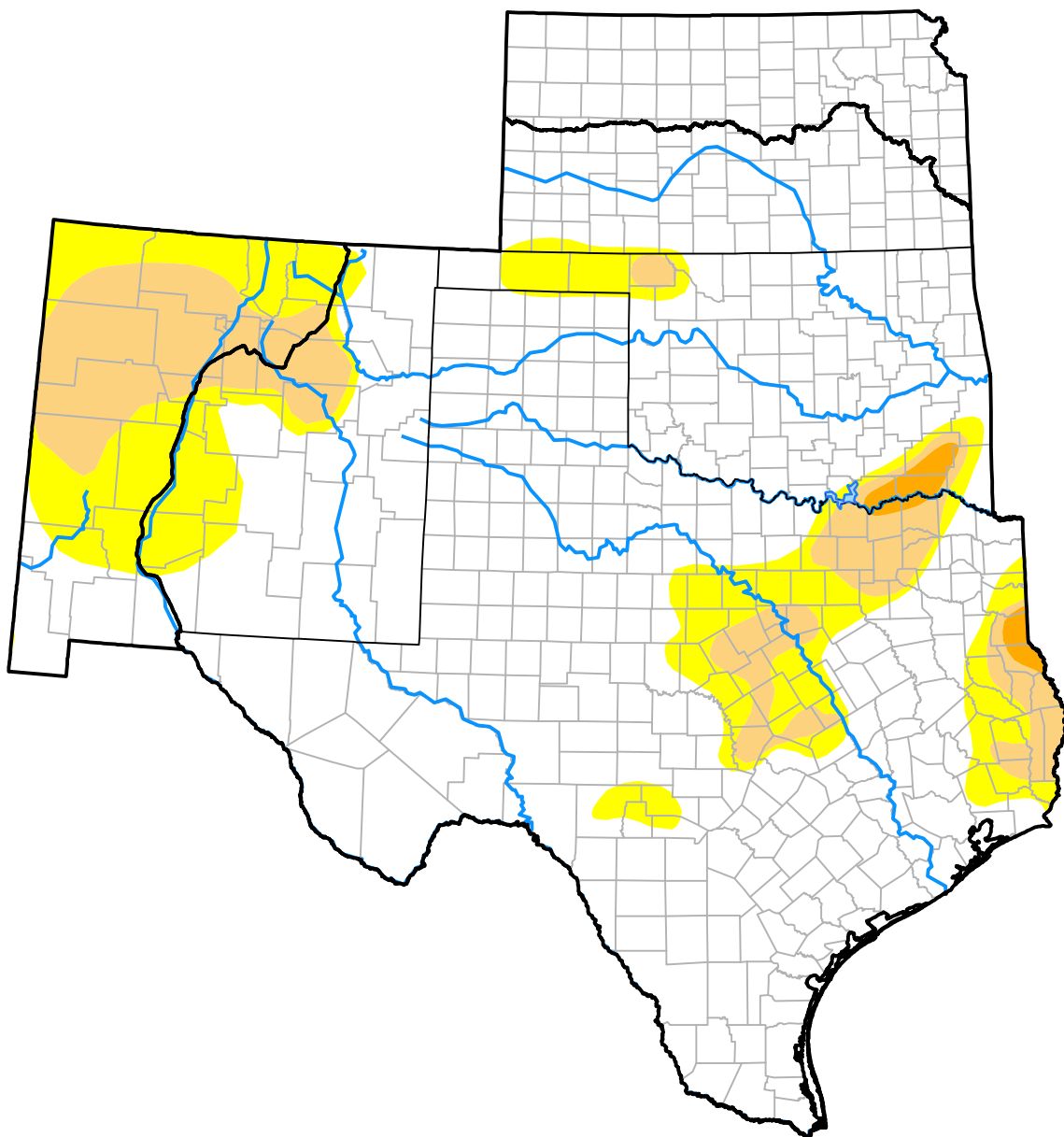


U.S. Drought Monitor

Southern Plains RDEWS

July 20, 2010
 (Released Thursday, Jul. 22, 2010)
 Valid 8 a.m. EDT



Drought Conditions (Percent Area)

	None	D0-D4	D1-D4	D2-D4	D3-D4	D4
Current	73.33	26.67	11.59	0.78	0.00	0.00
Last Week <i>07-15-2010</i>	75.68	24.32	9.59	0.97	0.00	0.00
3 Months Ago <i>04-22-2010</i>	91.47	8.53	0.00	0.00	0.00	0.00
Start of Calendar Year <i>12-31-2009</i>	72.79	27.21	6.75	1.95	0.00	0.00
Start of Water Year <i>10-01-2009</i>	71.51	28.49	16.94	12.74	7.15	1.82
One Year Ago <i>07-23-2009</i>	38.54	61.46	31.68	18.22	14.31	9.58

Intensity:



The Drought Monitor focuses on broad-scale conditions. Local conditions may vary. For more information on the Drought Monitor, go to <https://droughtmonitor.unl.edu/About.aspx>

Author:

Anthony Artusa
 NOAA/NWS/NCEP/CPC

