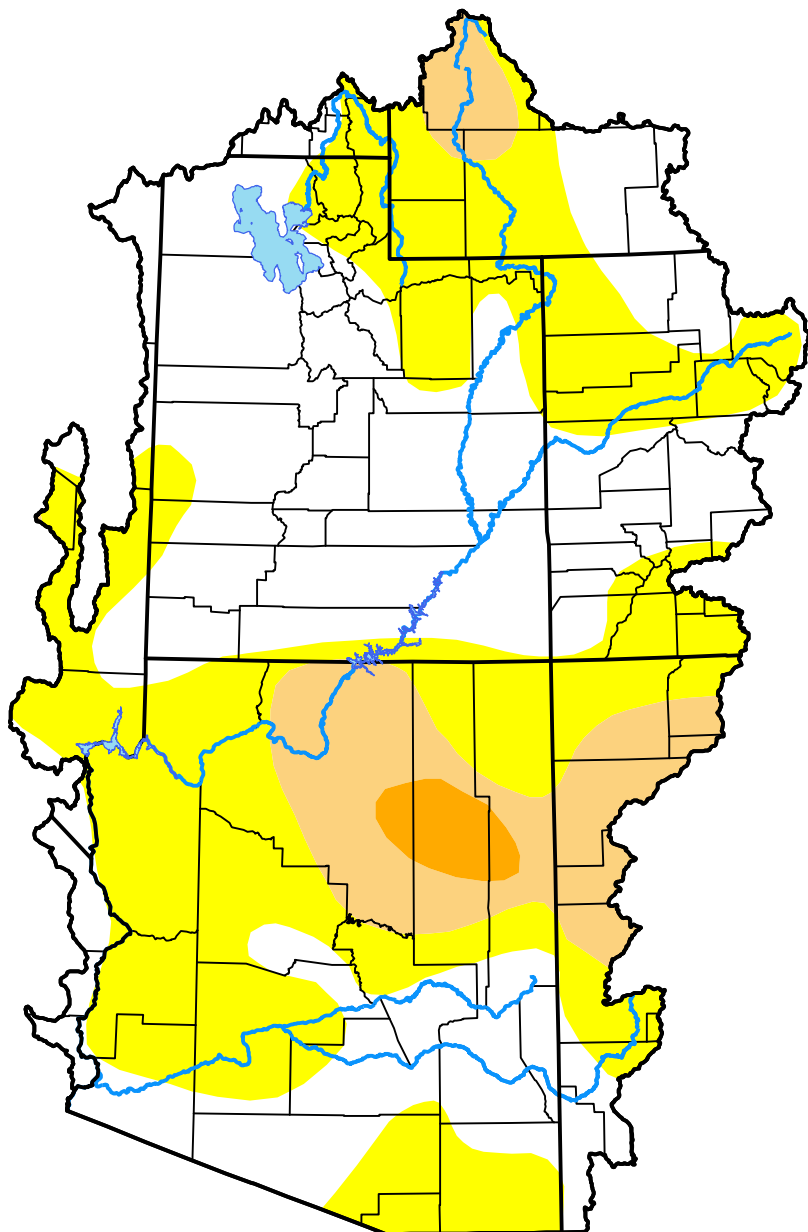


U.S. Drought Monitor

Colorado Basin RFC

July 20, 2010
 (Released Thursday, Jul. 22, 2010)
 Valid 8 a.m. EDT



Drought Conditions (Percent Area)

	None	D0	D1	D2	D3	D4
Current	46.43	40.75	11.25	1.57	0.00	0.00
Last Week <i>07-15-2010</i>	55.28	35.17	7.99	1.57	0.00	0.00
3 Months Ago <i>04-22-2010</i>	42.97	44.06	10.20	2.78	0.00	0.00
Start of Calendar Year <i>12-31-2009</i>	21.84	25.95	23.91	26.41	1.89	0.00
Start of Water Year <i>10-01-2009</i>	39.75	36.73	23.52	0.00	0.00	0.00
One Year Ago <i>07-23-2009</i>	74.80	25.08	0.13	0.00	0.00	0.00

Intensity:



The Drought Monitor focuses on broad-scale conditions. Local conditions may vary. For more information on the Drought Monitor, go to <https://droughtmonitor.unl.edu/About.aspx>

Author:

Anthony Artusa
 NOAA/NWS/NCEP/CPC

