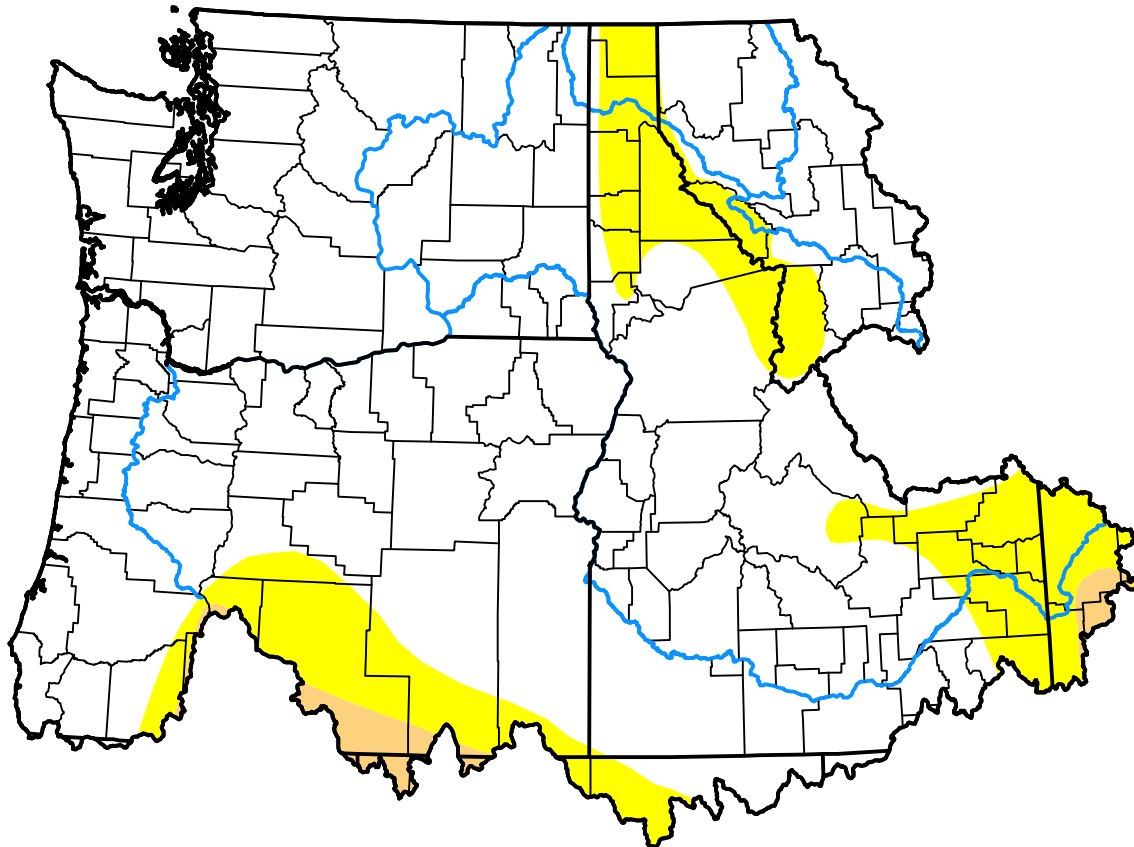


# U.S. Drought Monitor Northwest RFC

**July 20, 2010**  
(Released Thursday, Jul. 22, 2010)  
Valid 8 a.m. EDT



### Drought Conditions (Percent Area)

	None	D0	D1	D2	D3	D4
<b>Current</b>	83.01	15.44	1.55	0.00	0.00	0.00
<b>Last Week</b> <i>07-15-2010</i>	83.01	15.44	1.55	0.00	0.00	0.00
<b>3 Months Ago</b> <i>04-22-2010</i>	24.66	40.42	28.24	6.68	0.00	0.00
<b>Start of Calendar Year</b> <i>12-31-2009</i>	47.45	46.61	4.01	1.93	0.00	0.00
<b>Start of Water Year</b> <i>10-01-2009</i>	24.95	61.85	10.82	2.39	0.00	0.00
<b>One Year Ago</b> <i>07-23-2009</i>	62.56	27.57	9.35	0.53	0.00	0.00

### Intensity:



The Drought Monitor focuses on broad-scale conditions. Local conditions may vary. For more information on the Drought Monitor, go to <https://droughtmonitor.unl.edu/About.aspx>

### Author:

Anthony Artusa  
NOAA/NWS/NCEP/CPC



[droughtmonitor.unl.edu](https://droughtmonitor.unl.edu)